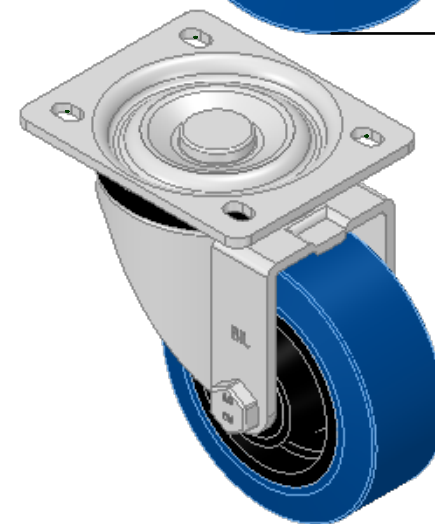
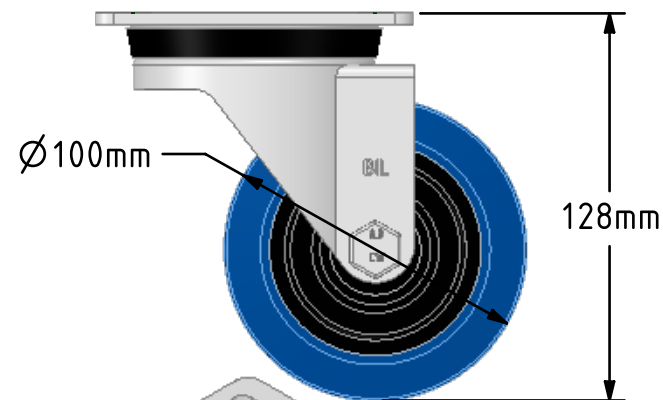
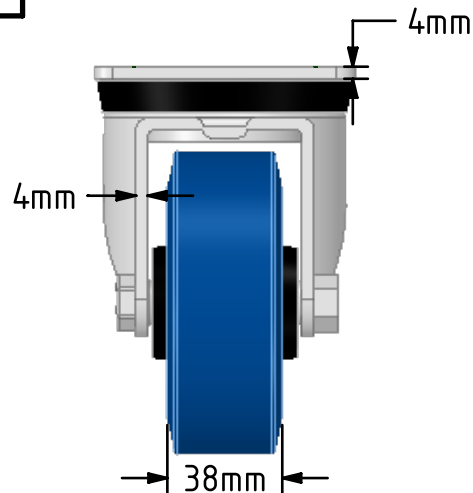
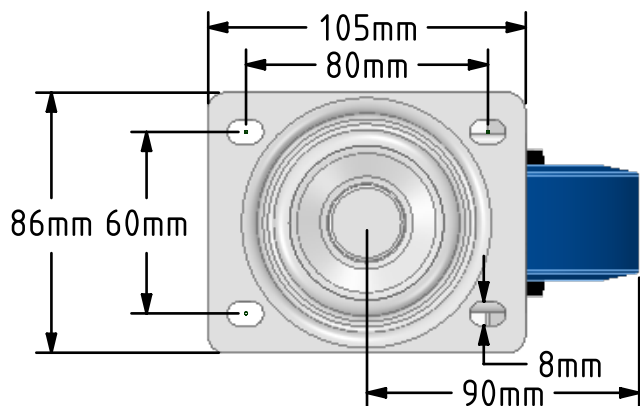
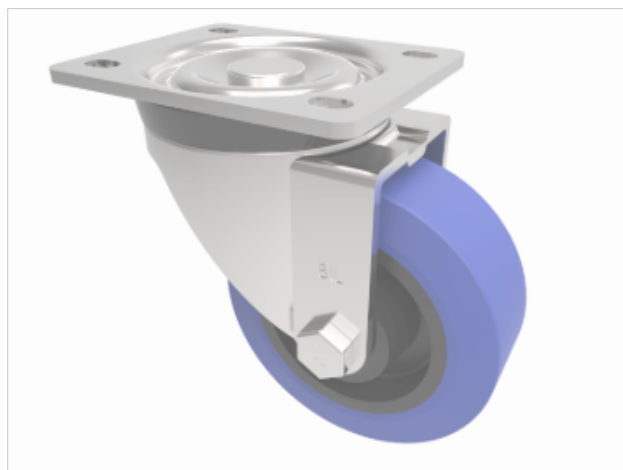


DRAWING DISCLAIMER
 COPYRIGHT OF THIS DRAWING IS RESERVED BY BIL GROUP LTD. IT IS ISSUED ON CONDITION THAT IT IS NOT REPRODUCED, COPIED, OR DISCLOSED TO A THIRD PARTY EITHER WHOLLY OR IN PART WITHOUT THE CONSENT IN WRITING OF BIL GROUP LTD.



Description:
 BZH100RNB

Pressed steel swivel castor with flat top plate fixing fitted with a blue 75 shore A elastic rubber tyre on black nylon centre with roller bearing. Wheel diameter 100mm, tread width 38mm, overall height 128mm, plate size 105mm x 86mm, hole centres 80mm x 60mm. Load capacity 250kg.



	NAME	DATE
DRAWN	Matt	10/10/18
APPROVED BY	Chris	10/10/18
SCALE	2:5	10/10/18
WEIGHT	1.149kg	10/10/18



BIL Group Ltd, Porte Marsh Road, Calne
 Wiltshire, SN11 9BW, United Kingdom
 Tel +44 (0)1249 822 222 Fax: +44 (0)1249 822 300
 www.bilgroup.co.uk

TITLE

BZH100RNB

UNLESS OTHERWISE SPECIFIED DIMENSIONS ARE IN MILLIMETRES

Unspecified Tolerances
 Machining ± 0.25mm
 Fabrication ± 1mm

SIZE	DWG NO.	REV
A4	BILCW03BZH100RNB_02	2
FILE NAME	BILCW03BZH100RNB_02.PDF SHEET 1 OF 1	