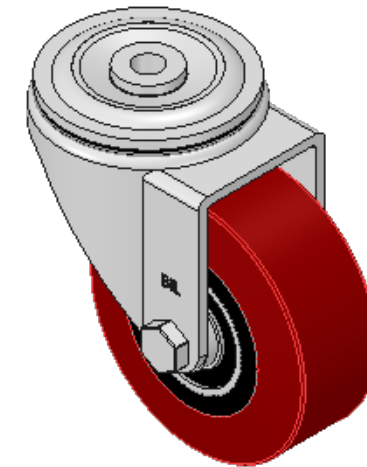
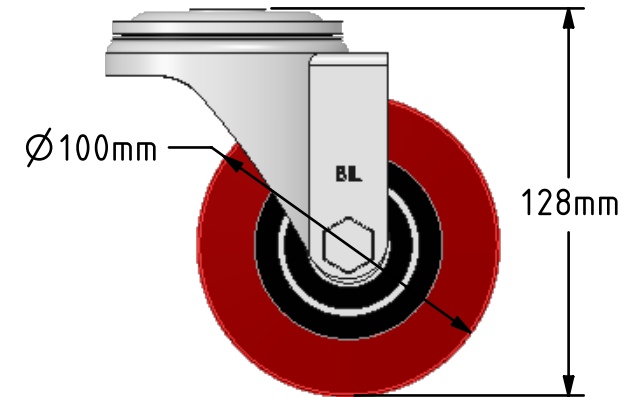
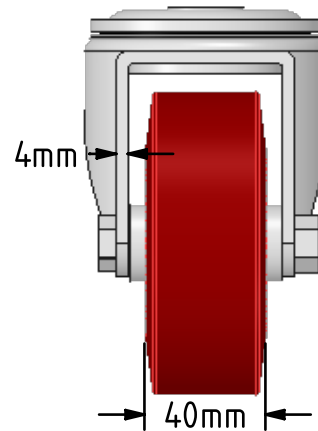
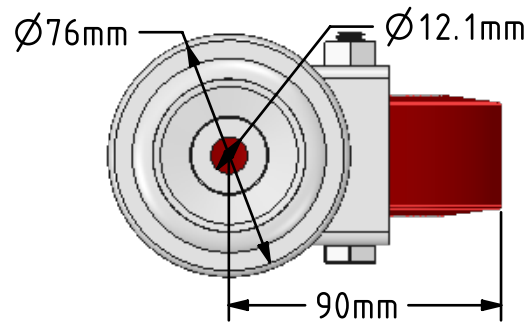


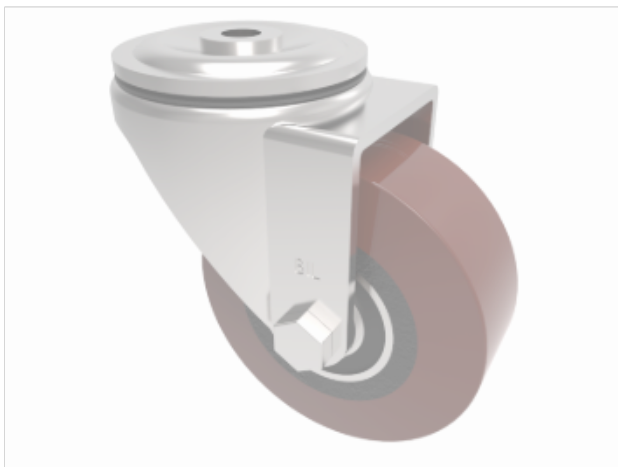
**DRAWING DISCLAIMER**


COPYRIGHT OF THIS DRAWING IS RESERVED BY BIL GROUP LTD. IT IS ISSUED ON CONDITION THAT IT IS NOT REPRODUCED, COPIED, OR DISCLOSED TO A THIRD PARTY EITHER WHOLLY OR IN PART WITHOUT THE CONSENT IN WRITING OF BIL GROUP LTD.

**Description:**

BZH100PTBJBH12

Pressed steel swivel castor with a 12mm bolt hole fixing fitted with a polyurethane tyred cast iron centred wheel with ball journal bearings. Wheel diameter 100mm, tread width 40mm, overall height 128mm. Load capacity 300kg.



	NAME	DATE	<div></div> <div>BIL Group Ltd, Porte Marsh Road, Calne Wiltshire, SN11 9BW, United Kingdom Tel +44 (0)1249 822 222 Fax: +44 (0)1249 822 300 www.bilgroup.co.uk</div>		
DRAWN	Matt	08/02/18			
APPROVED BY	Tim W	08/02/18			
SCALE	2:5	08/02/18			
WEIGHT	1.537kg	08/02/18			
UNLESS OTHERWISE SPECIFIED DIMENSIONS ARE IN MILLIMETRES  Unspecified Tolerances Machining ± 0.25mm Fabrication ± 1mm			TITLE		
			BZH100PTBJBH12		
			SIZE	DWG NO.	REV
			A4	BILCW03BZH100PTBJBH12__02	2
			FILE NAME	BILCW03BZH100PTBJBH12__02.PDF SHEET 1 OF 1	