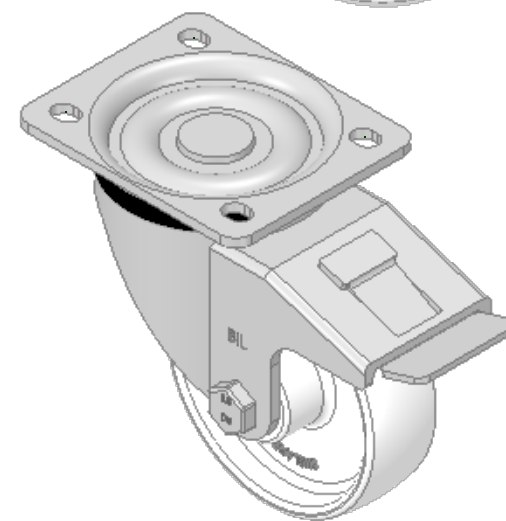
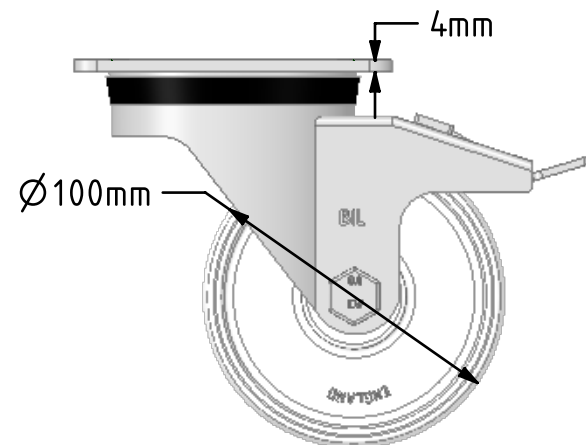
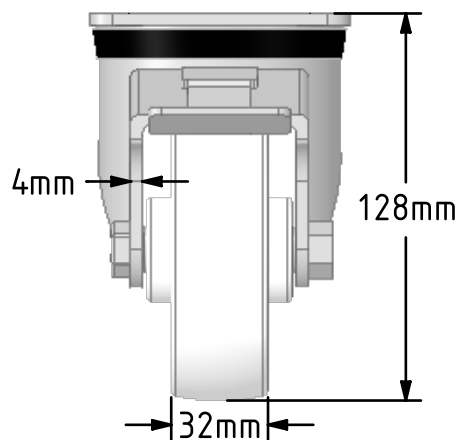
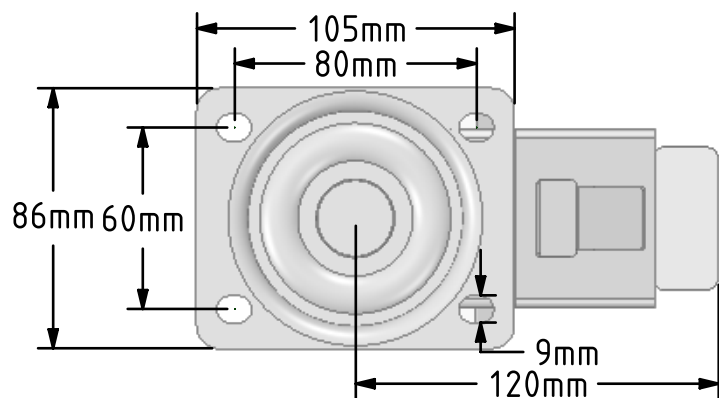


DRAWING DISCLAIMER
 COPYRIGHT OF THIS DRAWING IS RESERVED BY BIL GROUP LTD. IT IS ISSUED ON CONDITION THAT IT IS NOT REPRODUCED, COPIED, OR DISCLOSED TO A THIRD PARTY EITHER WHOLLY OR IN PART WITHOUT THE CONSENT IN WRITING OF BIL GROUP LTD.



Description:
 BZH100NYBSWB

Pressed steel swivel castor with a top plate fixing fitted with a white nylon wheel with roller bearings and total lock brake. Wheel diameter 100mm, tread width 32mm, overall height 128mm, top plate 105mm x 86mm, hole centres 80mm x 60mm. Load capacity 270kg



	NAME	DATE
DRAWN	Matt	11/10/18
APPROVED BY	Kevin	11/10/18
SCALE	2:5	11/10/18
WEIGHT	1.179kg	11/10/18

UNLESS OTHERWISE SPECIFIED DIMENSIONS ARE IN MILLIMETRES

Unspecified Tolerances
 Machining ± 0.25mm
 Fabrication ± 1mm



BIL Group Ltd, Porte Marsh Road, Calne
 Wiltshire, SN11 9BW, United Kingdom
 Tel +44 (0)1249 822 222 Fax: +44 (0)1249 822 300
 www.bilgroup.co.uk

TITLE

BZH100NYBSWB

SIZE	DWG NO.	REV
A4	BILCW03BZH100NYBSWB_01	1

FILE NAME BILCW03BZH100NYBSWB_01.PDF SHEET 1 OF 1