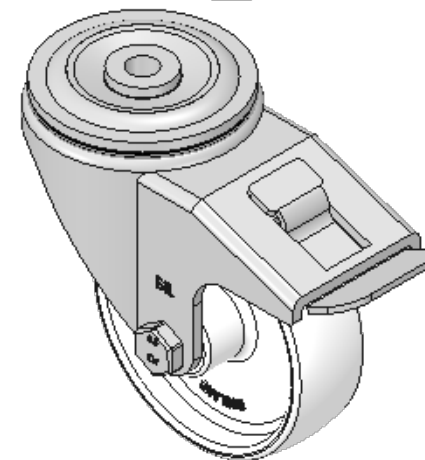
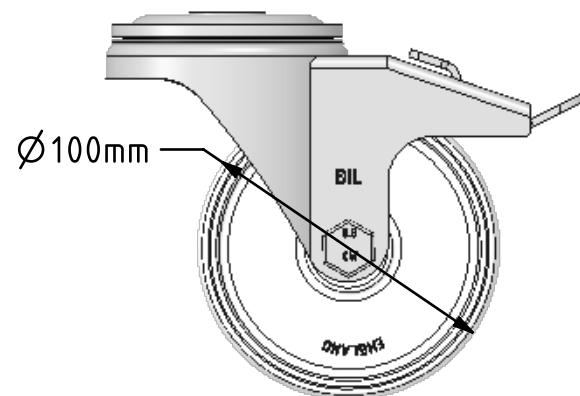
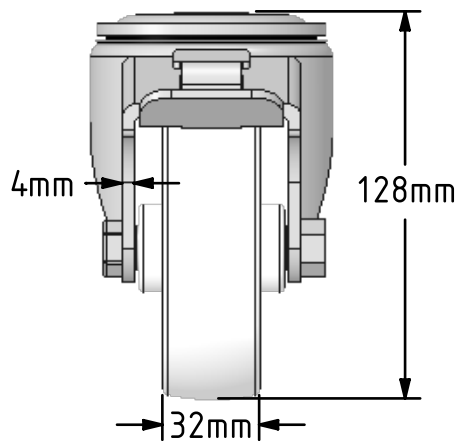
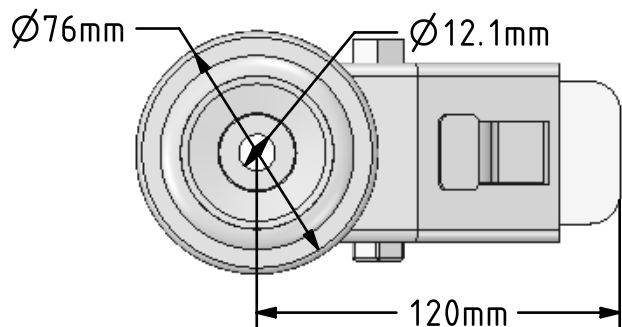
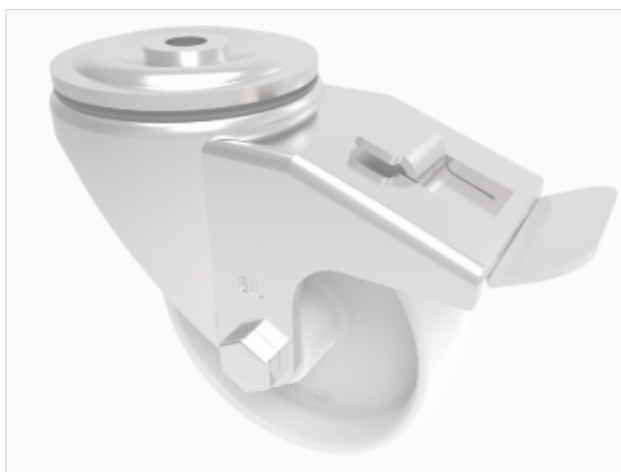



DRAWING DISCLAIMER  
 COPYRIGHT OF THIS DRAWING IS RESERVED BY BIL GROUP LTD. IT IS ISSUED ON CONDITION THAT IT IS NOT REPRODUCED, COPIED, OR DISCLOSED TO A THIRD PARTY EITHER WHOLLY OR IN PART WITHOUT THE CONSENT IN WRITING OF BIL GROUP LTD.



Description:  
 BZH100NYBH12SWB

Pressed steel swivel castor with a 12mm bolt hole fixing fitted with a white nylon wheel with a plain bearing and total lock brake. Wheel diameter 100mm, tread width 32mm, overall height 128mm. Load capacity 270kg.



	NAME	DATE	BIL Group Ltd, Porte Marsh Road, Calne Wiltshire, SN11 9BW, United Kingdom Tel +44 (0)1249 822 222 Fax: +44 (0)1249 822 300 www.bilgroup.co.uk	
DRAWN	Matt	06/02/18	 TITLE <b>BZH100NYBH12SWB</b>	
APPROVED BY	Chris	06/02/18		
SCALE	2:5	06/02/18		
WEIGHT	0.984kg	06/02/18		
UNLESS OTHERWISE SPECIFIED DIMENSIONS ARE IN MILLIMETRES			SIZE	DWG NO.
Unspecified Tolerances Machining ± 0.25mm Fabrication ± 1mm			A4	BILCW03BZH100NYBH12SWB_01
			REV	1
			FILE NAME	BILCW03BZH100NYBH12SWB_01.PDF SHEET 1 OF 1