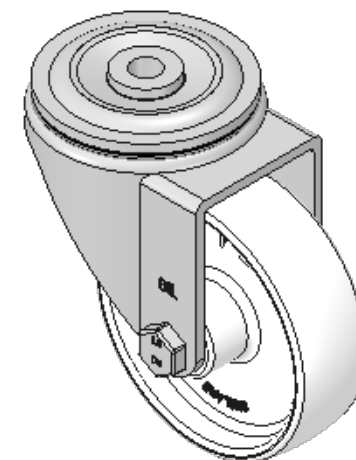
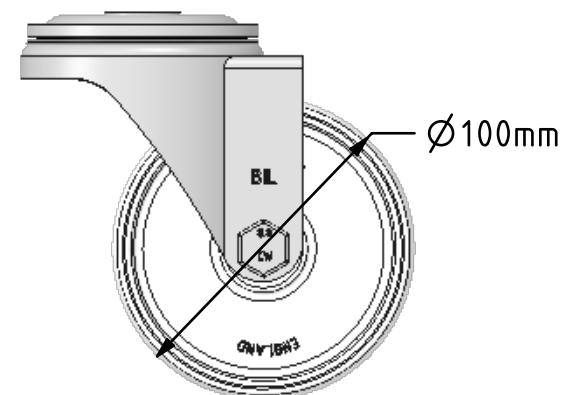
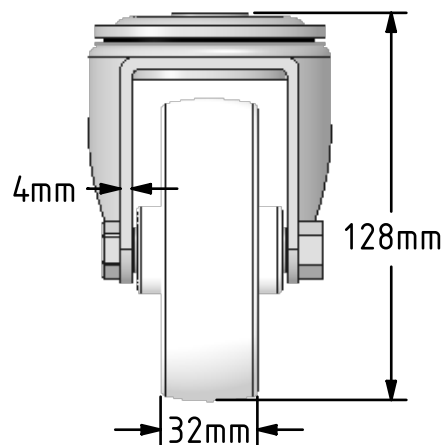
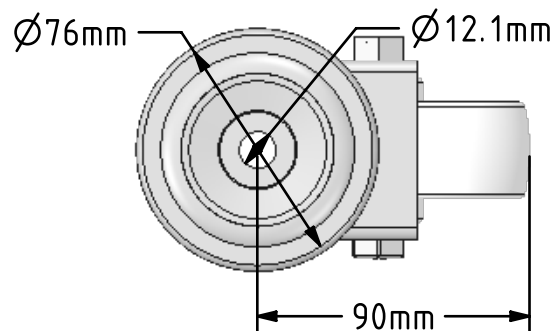



DRAWING DISCLAIMER
 COPYRIGHT OF THIS DRAWING IS RESERVED BY BIL GROUP LTD. IT IS ISSUED ON CONDITION THAT IT IS NOT REPRODUCED, COPIED, OR DISCLOSED TO A THIRD PARTY EITHER WHOLLY OR IN PART WITHOUT THE CONSENT IN WRITING OF BIL GROUP LTD.



Description:
 BZH100NYBH12

Pressed steel swivel castor with a 12mm bolt hole fixing fitted with a white nylon wheel with a plain bearing. Wheel diameter 100mm, tread width 32mm, overall height 128mm. Load capacity 270kg.



| | | | | |
|---|---------|----------|---|--|
| | NAME | DATE |  BIL Group Ltd, Porte Marsh Road, Calne Wiltshire, SN11 9BW, United Kingdom Tel +44 (0)1249 822 222 Fax: +44 (0)1249 822 300 www.bilgroup.co.uk | |
| DRAWN | Matt | 06/02/18 | TITLE | |
| APPROVED BY | Chris | 06/02/18 | BZH100NYBH12 | |
| SCALE | 2.5 | 06/02/18 | SIZE | DWG NO. |
| WEIGHT | 0.812kg | 06/02/18 | A4 | BILCW03BZH100NYBH12__02 |
| UNLESS OTHERWISE SPECIFIED DIMENSIONS ARE IN MILLIMETRES | | | REV | 2 |
| Unspecified Tolerances Machining ± 0.25mm Fabrication ± 1mm | | | FILE NAME | BILCW03BZH100NYBH12__02.PDF SHEET 1 OF 1 |