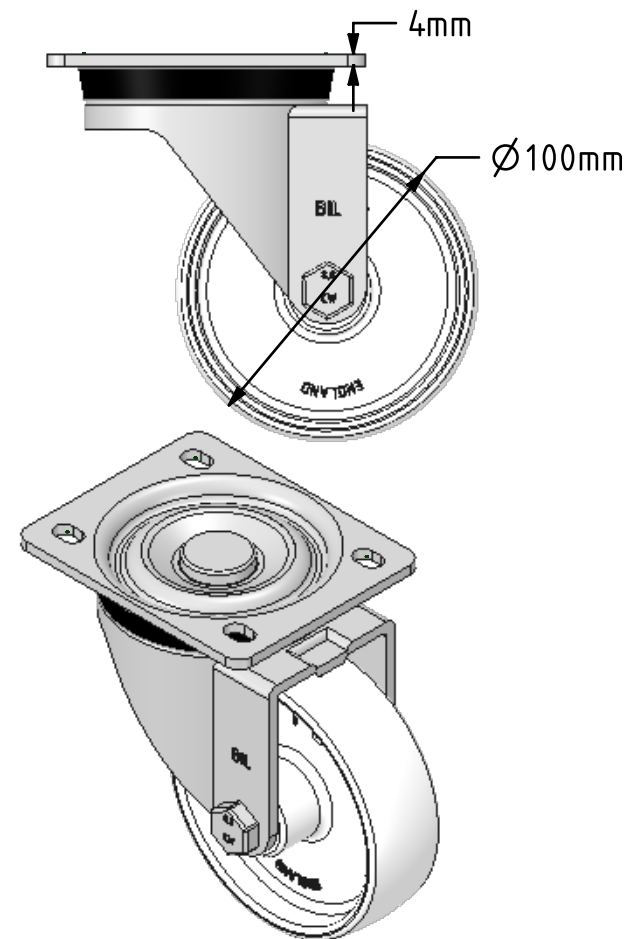
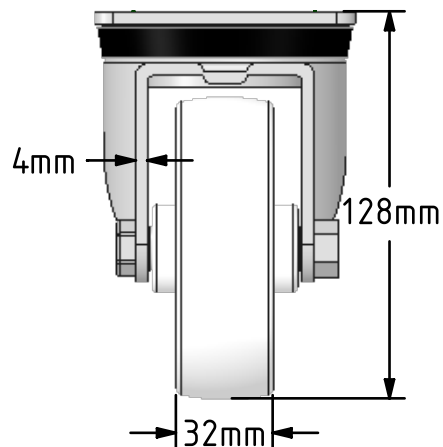
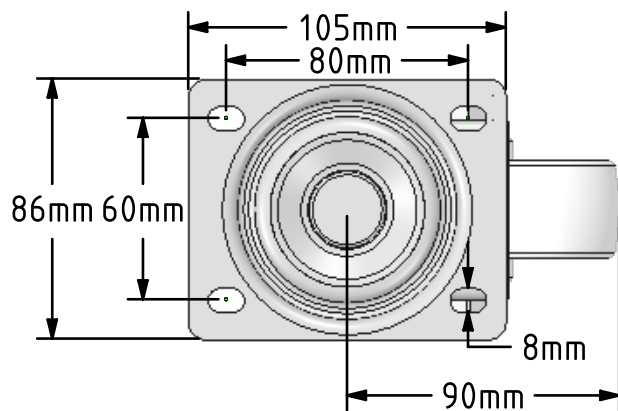
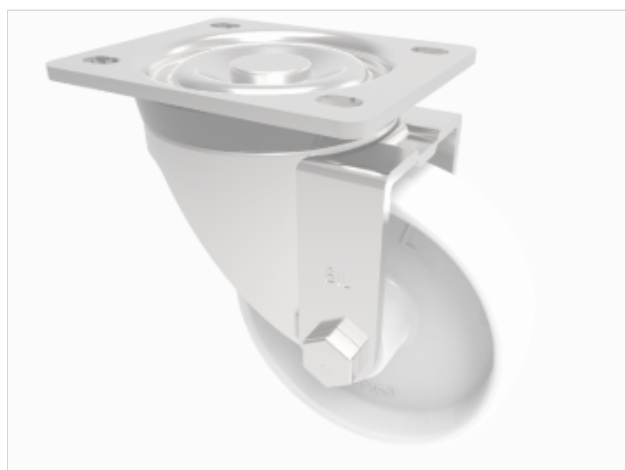



DRAWING DISCLAIMER
 COPYRIGHT OF THIS DRAWING IS RESERVED BY BIL GROUP LTD. IT IS ISSUED ON CONDITION THAT IT IS NOT REPRODUCED, COPIED, OR DISCLOSED TO A THIRD PARTY EITHER WHOLLY OR IN PART WITHOUT THE CONSENT IN WRITING OF BIL GROUP LTD.



Description:
 BZH100NY

Pressed steel swivel castor with a top plate fixing fitted with a white nylon wheel with a plain bearing. Wheel diameter 100mm, tread width 32mm, overall height 128mm, plate size 105mm x 86mm, hole centres 80mm x 60mm. Load capacity 270kg.



	NAME	DATE	 BIL Group Ltd, Porte Marsh Road, Calne Wiltshire, SN11 9BW, United Kingdom Tel +44 (0)1249 822 222 Fax: +44 (0)1249 822 300 www.bilgroup.co.uk	
DRAWN	Matt	30/01/18	TITLE	
APPROVED BY	Tim W	30/01/18	BZH100NY	
SCALE	2:5	30/01/18	SIZE	DWG NO.
WEIGHT	0.963kg	30/01/18	A4	BILCW03BZH100NY_01
UNLESS OTHERWISE SPECIFIED DIMENSIONS ARE IN MILLIMETRES			REV	1
Unspecified Tolerances Machining ± 0.25mm Fabrication ± 1mm			FILE NAME	BILCW03BZH100NY_01.PDF SHEET 1 OF 1