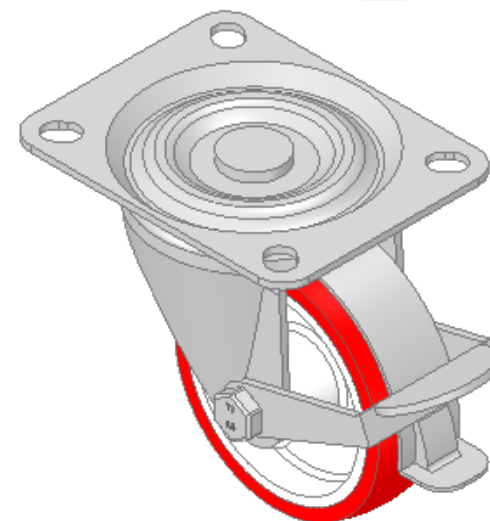
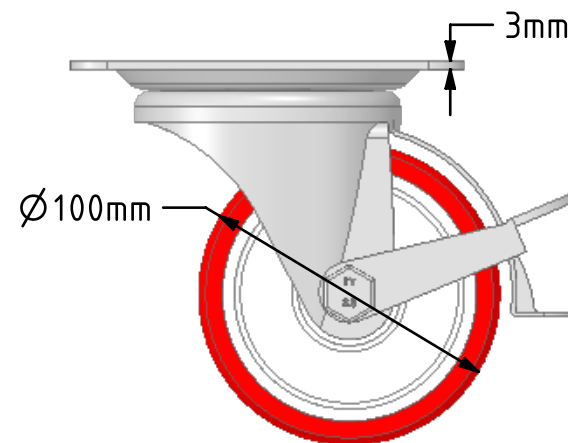
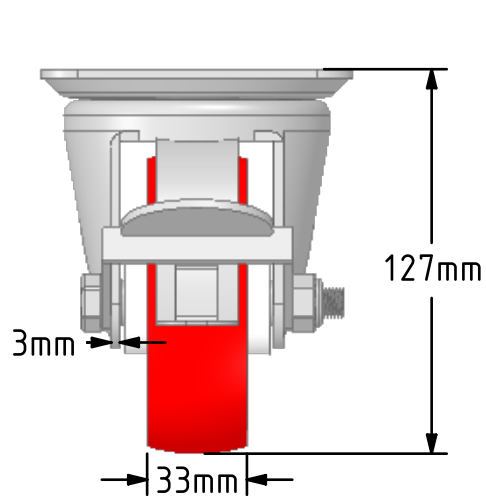
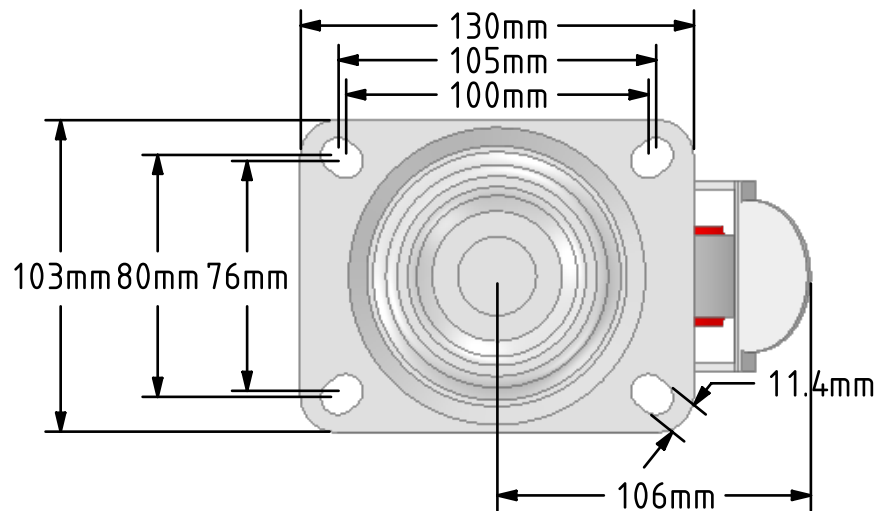


DRAWING DISCLAIMER  
 COPYRIGHT OF THIS DRAWING IS RESERVED BY BIL GROUP LTD. IT IS ISSUED ON CONDITION THAT IT IS NOT REPRODUCED, COPIED, OR DISCLOSED TO A THIRD PARTY EITHER WHOLLY OR IN PART WITHOUT THE CONSENT IN WRITING OF BIL GROUP LTD.



Description:  
 BZH100NPBLPBR

Pressed steel swivel castor with a top plate fixing fitted with a red polyurethane white nylon centred wheel with a roller bearing and wheel brake. Wheel diameter 100mm, tread width 33mm, overall height 127mm, top plate 130mm x 103mm, hole centres 105mm x 80mm or 100mm x 76mm. Load capacity 250kg.



	NAME	DATE
DRAWN	Matt	20/09/18
APPROVED BY	Chris	20/09/18
SCALE	2:5	20/09/18
WEIGHT	1.128kg	20/09/18

 BIL Group Ltd, Porte Marsh Road, Calne  
 Wiltshire, SN11 9BW, United Kingdom  
 Tel +44 (0)1249 822 222 Fax: +44 (0)1249 822 300  
 www.bilgroup.co.uk

TITLE	
BZH100NPBLPBR	

UNLESS OTHERWISE SPECIFIED DIMENSIONS ARE IN MILLIMETRES  
 Unspecified Tolerances  
 Machining ± 0.25mm  
 Fabrication ± 1mm

SIZE	DWG NO.	REV
A4	BILCW03BZH100NPBLPBR_02	2
FILE NAME BILCW03BZH100NPBLPBR_02.PDF		SHEET 1 OF 1