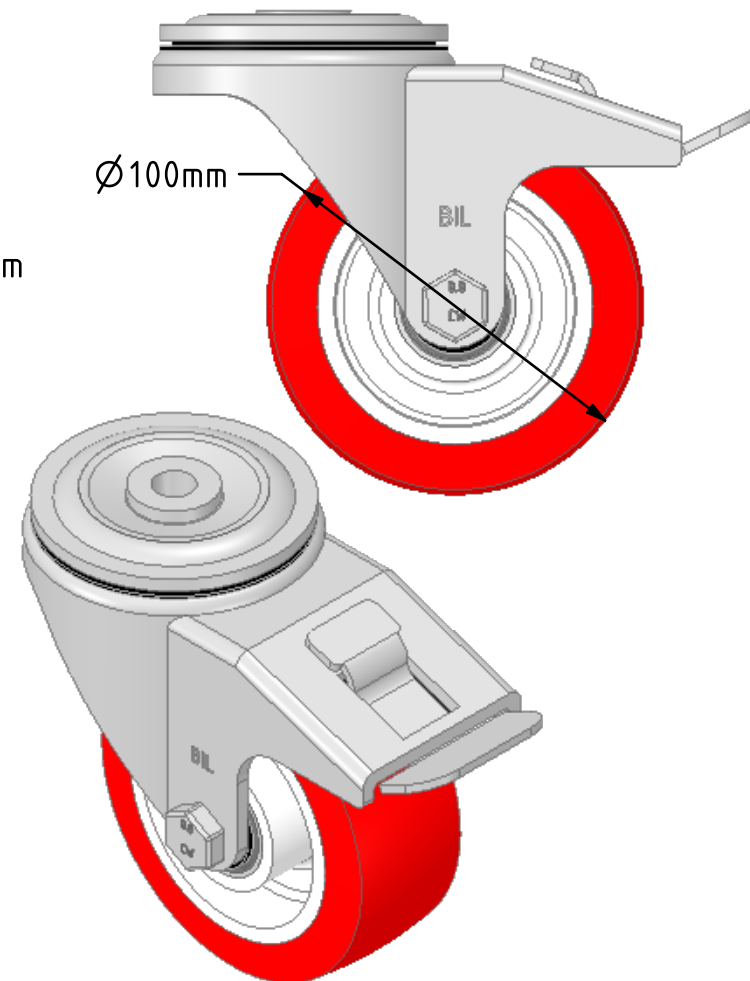
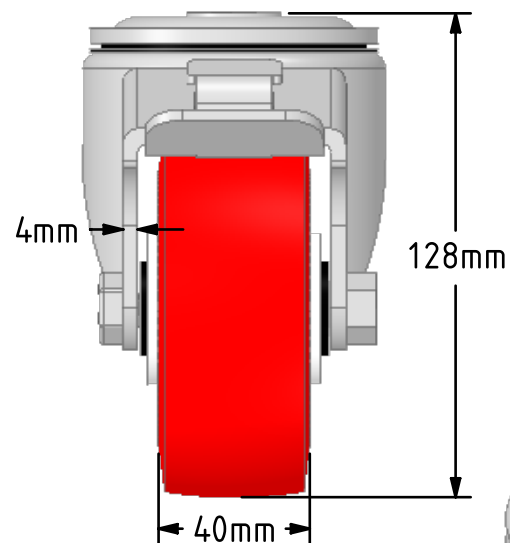
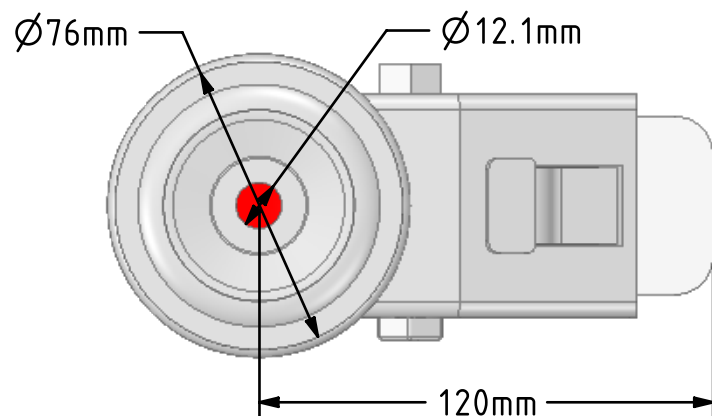


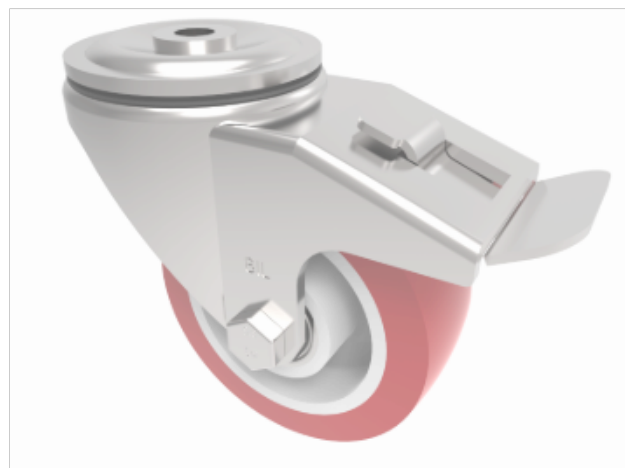
DRAWING DISCLAIMER


COPYRIGHT OF THIS DRAWING IS RESERVED BY BIL GROUP LTD. IT IS ISSUED ON CONDITION THAT IT IS NOT REPRODUCED, COPIED, OR DISCLOSED TO A THIRD PARTY EITHER WHOLLY OR IN PART WITHOUT THE CONSENT IN WRITING OF BIL GROUP LTD.

**Description:**

BZH100NPBJBH12SWB

Pressed steel swivel castor with a 12mm bolt hole fitted with a red polyurethane tyre on white nylon centred wheel with ball bearings and a total lock brake, wheel diameter 100mm, tread width 40mm, overall height 128mm, load capacity of 250kg.



	NAME	DATE		BIL Group Ltd, Porte Marsh Road, Calne Wiltshire, SN11 9BW, United Kingdom Tel +44 (0)1249 822 222 Fax: +44 (0)1249 822 300 www.bilgroup.co.uk		
DRAWN	Matt	30/10/18				
APPROVED BY	Chris	30/10/18				
SCALE	1:2	30/10/18		TITLE		
WEIGHT	1.17kg	30/10/18		BZH100NPBJBH12SWB		
UNLESS OTHERWISE SPECIFIED DIMENSIONS ARE IN MILLIMETRES			SIZE	DWG NO.	REV	
Unspecified Tolerances Machining $\pm 0.25\text{mm}$ Fabrication $\pm 1\text{mm}$			A4	BILCW03BZH100NPBJBH12SWB__01	1	
			FILE NAME BILCW03BZH100NPBJBH12SWB__01.PDF SHEET 1 OF 1			