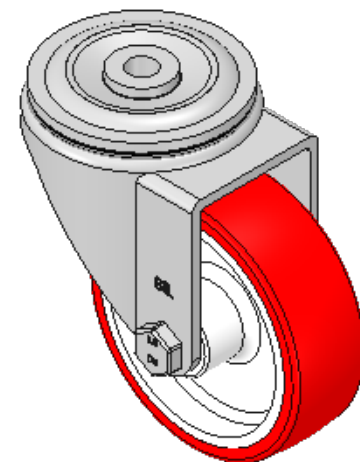
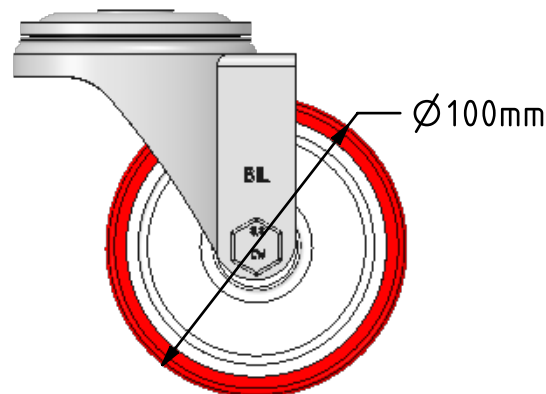
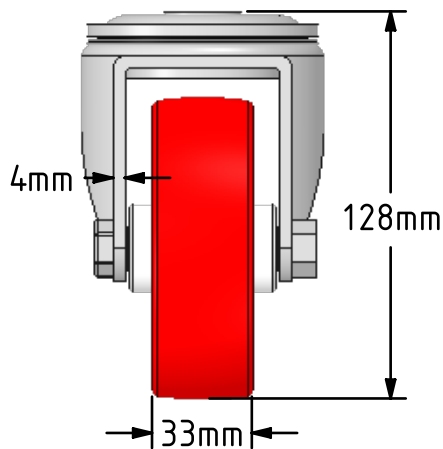
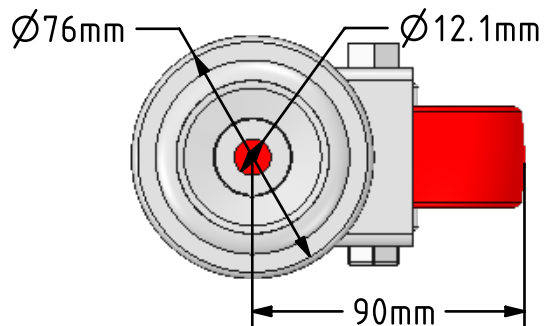



DRAWING DISCLAIMER
 COPYRIGHT OF THIS DRAWING IS RESERVED BY BIL GROUP LTD. IT IS ISSUED ON CONDITION THAT IT IS NOT REPRODUCED, COPIED, OR DISCLOSED TO A THIRD PARTY EITHER WHOLLY OR IN PART WITHOUT THE CONSENT IN WRITING OF BIL GROUP LTD.



Description:
 BZH100NPBH12

Pressed steel swivel castor with a 12mm bolt hole fixing fitted with a red polyurethane on white nylon centred wheel with a plain bearing. Wheel diameter 100mm, tread width 33mm, overall height 128mm. Load capacity 250kg.



	NAME	DATE	 BIL Group Ltd, Porte Marsh Road, Calne Wiltshire, SN11 9BW, United Kingdom Tel +44 (0)1249 822 222 Fax: +44 (0)1249 822 300 www.bilgroup.co.uk
DRAWN	Matt	08/02/18	
APPROVED BY	Tim W	08/02/18	
SCALE	2:5	08/02/18	
WEIGHT	0.873kg	08/02/18	TITLE
UNLESS OTHERWISE SPECIFIED DIMENSIONS ARE IN MILLIMETRES Unspecified Tolerances Machining $\pm 0.25\text{mm}$ Fabrication $\pm 1\text{mm}$			BZH100NPBH12
SIZE		DWG NO.	REV
A4		BILCW03BZH100NPBH12_01	1
FILE NAME			SHEET 1 OF 1
BILCW03BZH100NPBH12_01.PDF			