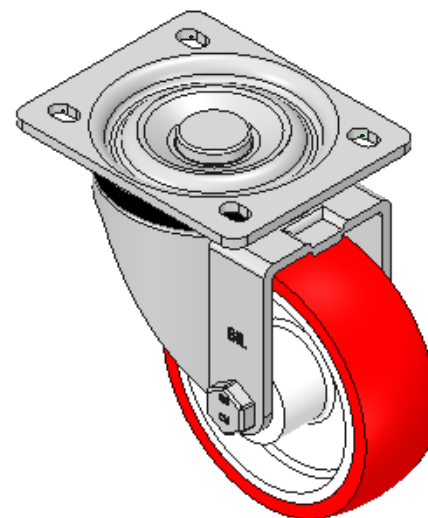
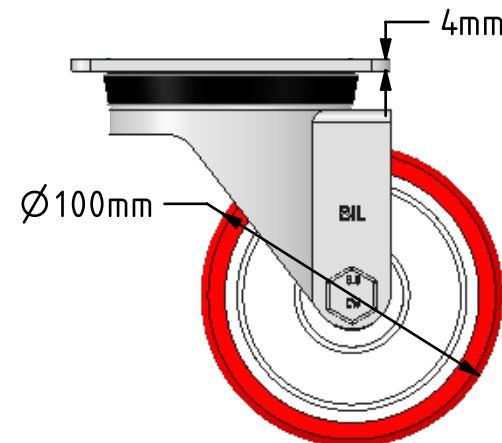
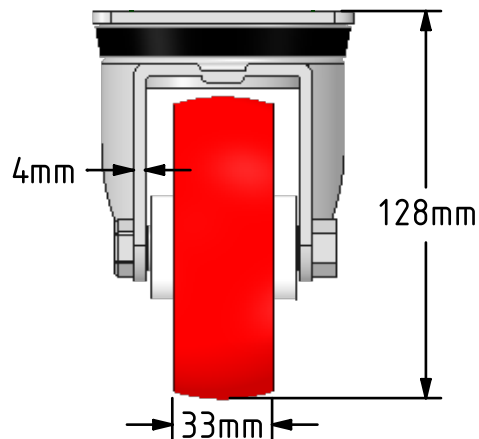
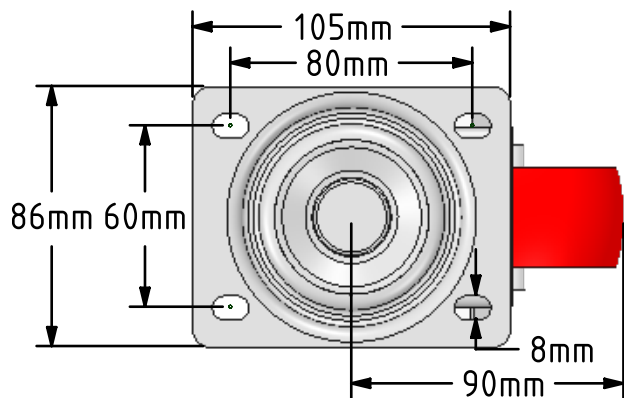
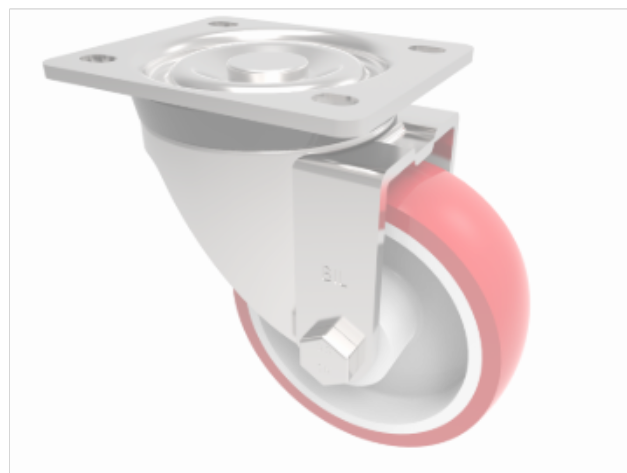


DRAWING DISCLAIMER
 COPYRIGHT OF THIS DRAWING IS RESERVED BY BIL GROUP LTD. IT IS ISSUED ON CONDITION THAT IT IS NOT REPRODUCED, COPIED, OR DISCLOSED TO A THIRD PARTY EITHER WHOLLY OR IN PART WITHOUT THE CONSENT IN WRITING OF BIL GROUP LTD.



Description:
 BZH100NPB

Pressed steel swivel castor with a top plate fitted with a red polyurethane tyre on white nylon centred wheel with roller bearings, 100mm wheel diameter, 33mm tread width, 128mm overall height, 105 x 86mm top plate, 80 x 60mm bolt holes, with a load capacity of 250kgs.



	NAME	DATE
DRAWN	Matt	05/02/18
APPROVED BY	Kevin	05/02/18
SCALE	2:5	05/02/18
WEIGHT	1.055kg	05/02/18

 BIL Group Ltd, Porte Marsh Road, Calne
 Wiltshire, SN11 9BW, United Kingdom
 Tel +44 (0)1249 822 222 Fax: +44 (0)1249 822 300
 www.bilgroup.co.uk

TITLE	BZH100NPB	
-------	-----------	--

UNLESS OTHERWISE SPECIFIED DIMENSIONS ARE IN MILLIMETRES		SIZE	DWG NO.	REV
Unspecified Tolerances Machining ± 0.25mm Fabrication ± 1mm		A4	BILCW03BZH100NPB_01	1
FILE NAME		BILCW03BZH100NPB_01.PDF		SHEET 1 OF 1