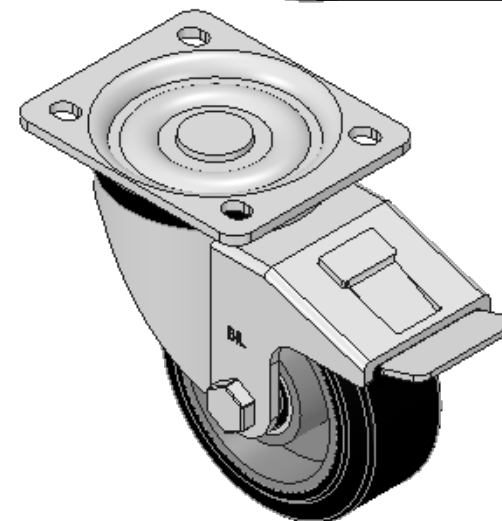
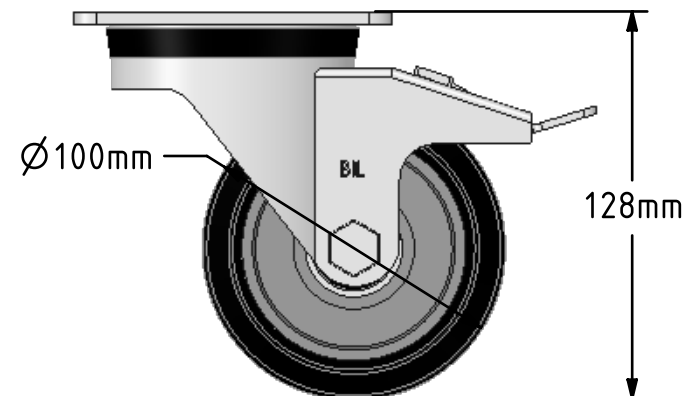
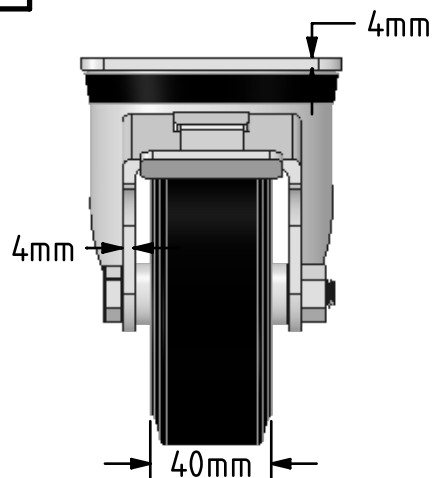
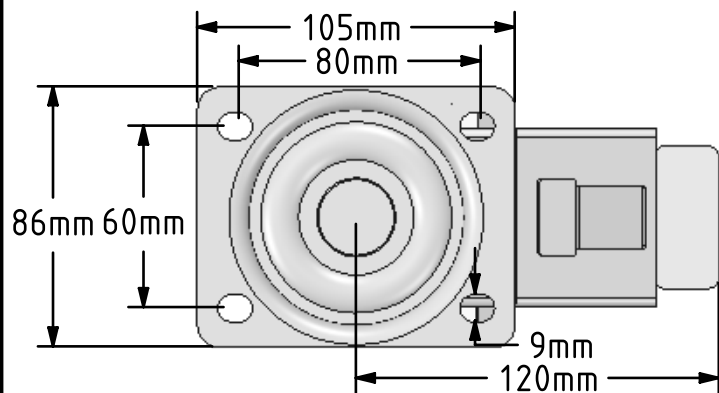


DRAWING DISCLAIMER  
 COPYRIGHT OF THIS DRAWING IS RESERVED BY BIL GROUP LTD. IT IS ISSUED ON CONDITION THAT IT IS NOT REPRODUCED, COPIED, OR DISCLOSED TO A THIRD PARTY EITHER WHOLLY OR IN PART WITHOUT THE CONSENT IN WRITING OF BIL GROUP LTD.



Description:  
 BZH100ERBJSWB

Pressed steel swivel castor with a top plate fixing fitted with a black high elastic natural 65 shore A rubber tyred aluminium centred wheel with ball bearings and total lock brake, Wheel diameter 100mm, tread width 38mm, overall height 128mm, top plate 105mm x 86mm, hole centres 80mm x 60mm. Load capacity 200kg. REACH compliant also PAH-Free rubber to confirm to EU-directive 2005/69/EC



|             | NAME    | DATE     |
|-------------|---------|----------|
| DRAWN       | Matt    | 02/02/18 |
| APPROVED BY | Tim W   | 02/02/18 |
| SCALE       | 2:5     | 02/02/18 |
| WEIGHT      | 1.468kg | 02/02/18 |

 BIL Group Ltd, Porte Marsh Road, Calne Wiltshire, SN11 9BW, United Kingdom  
 Tel +44 (0)1249 822 222 Fax: +44 (0)1249 822 300  
 www.bilgroup.co.uk

| TITLE         |  |
|---------------|--|
| BZH100ERBJSWB |  |

UNLESS OTHERWISE SPECIFIED DIMENSIONS ARE IN MILLIMETRES  
 Unspecified Tolerances  
 Machining ± 0.25mm  
 Fabrication ± 1mm

| SIZE                                  | DWG NO.                 | REV          |
|---------------------------------------|-------------------------|--------------|
| A4                                    | BILCW03BZH100ERBJSWB_01 | 1            |
| FILE NAME BILCW03BZH100ERBJSWB_01.PDF |                         | SHEET 1 OF 1 |