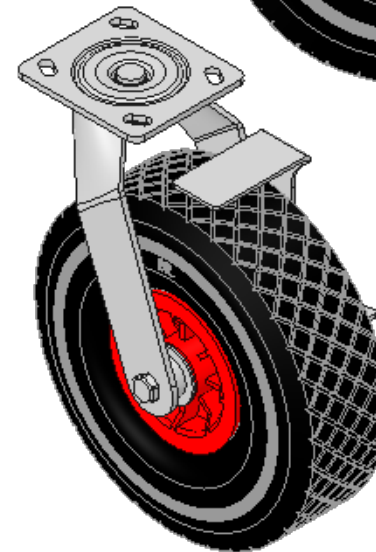
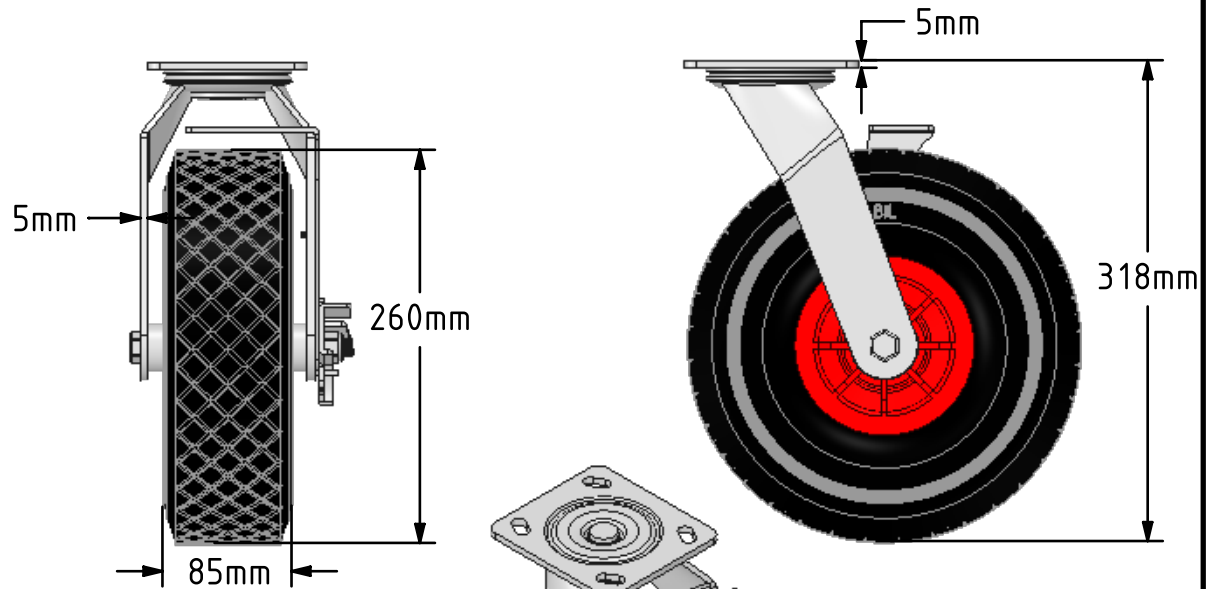
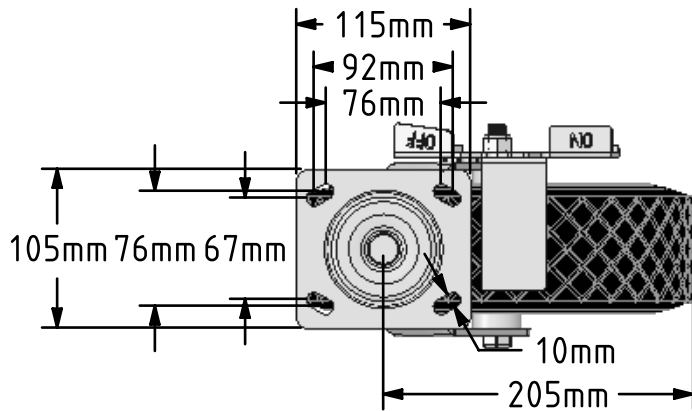



DRAWING DISCLAIMER
 COPYRIGHT OF THIS DRAWING IS RESERVED BY BIL GROUP LTD. IT IS ISSUED ON CONDITION THAT IT IS NOT REPRODUCED, COPIED, OR DISCLOSED TO A THIRD PARTY EITHER WHOLLY OR IN PART WITHOUT THE CONSENT IN WRITING OF BIL GROUP LTD.



Description:
 BZFPC260PPUBDBK
 Fabricated swivel castor with a top plate fixing fitted with a black diamond pattern puncture proof tyre red polypropylene centred wheel with roller bearing and a side fitting wheel brake. Wheel diameter 260, tread width 85mm, overall height 318mm, plate size 115mm x 105mm, hole centres 92mm x 67mm or 76mm x 76mm. Load capacity 120kg.



	NAME	DATE	BIL Group Ltd, Porte Marsh Road, Calne Wiltshire, SN11 9BW, United Kingdom Tel +44 (0)1249 822 222 Fax: +44 (0)1249 822 300 www.bilgroup.co.uk	
DRAWN	Matt	17/05/18	 TITLE BZFPC260PPUBDBK	
APPROVED BY	Chris	17/05/18		
SCALE	1:5	17/05/18		
WEIGHT	4.729kg	17/05/18		
UNLESS OTHERWISE SPECIFIED DIMENSIONS ARE IN MILLIMETRES			SIZE	DWG NO.
Unspecified Tolerances Machining ± 0.25mm Fabrication ± 1mm			A4	BILCW03BZFPC260PPUBDBK_01
			REV	1
			FILE NAME	BILCW03BZFPC260PPUBDBK_01.PDF SHEET 1 OF 1