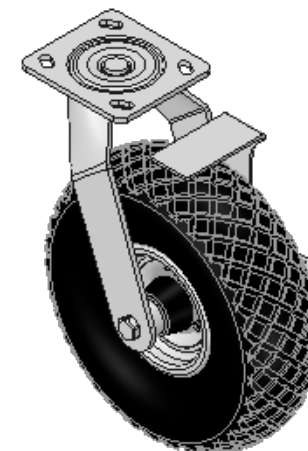
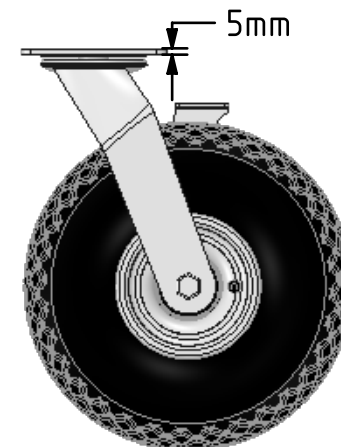
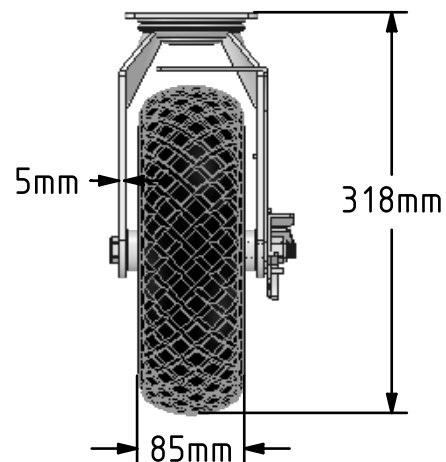
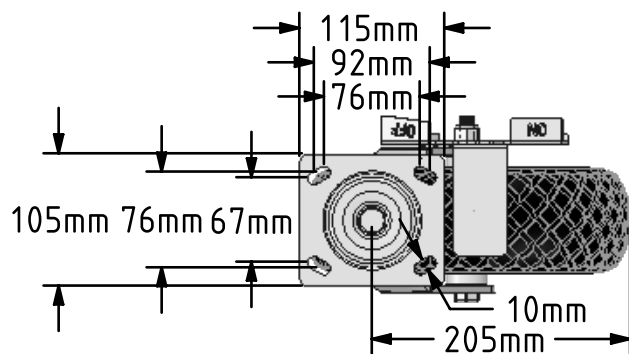


**DRAWING DISCLAIMER**

COPYRIGHT OF THIS DRAWING IS RESERVED BY BIL GROUP LTD. IT IS ISSUED ON CONDITION THAT IT IS NOT REPRODUCED, COPIED, OR DISCLOSED TO A THIRD PARTY EITHER WHOLLY OR IN PART WITHOUT THE CONSENT IN WRITING OF BIL GROUP LTD.



**Description:**

BZFPC260MRB6BK

Fabricated swivel castor with a top plate fixing fitted with a 6 ply black diamond pattern pneumatic tyre with a grey steel centre with roller bearing and side fitting wheel brake. Wheel diameter 260, tread width 85mm, overall height 318mm, plate size 115mm x 105mm, hole centres 92mm x 67 or 76mm x 76mm. Load capacity 270kg.at max speed 4KPH, for non-towing applications please note we manufacture to order and therefore a 24 hour delivery may not be possible..



	NAME	DATE
DRAWN	Matt	07/11/17
APPROVED BY	Tim W	07/11/17
SCALE	1:6	07/11/17
WEIGHT	4.232kg	07/11/17

UNLESS OTHERWISE SPECIFIED DIMENSIONS ARE IN MILLIMETRES

Unspecified Tolerances  
Machining ± 0.25mm  
Fabrication ± 1mm



BIL Group Ltd, Porte Marsh Road, Calne  
Wiltshire, SN11 9BW, United Kingdom  
Tel +44 (0)1249 822 222 Fax: +44 (0)1249 822 300  
www.bilgroup.co.uk

TITLE

BZFPC260MRB6BK

SIZE DWG NO.

A4

BILCW03BZFPC260MRB6BK\_01

REV

1

FILE NAME BILCW03BZFPC260MRB6BK\_01.PDF

SHEET 1 OF 1