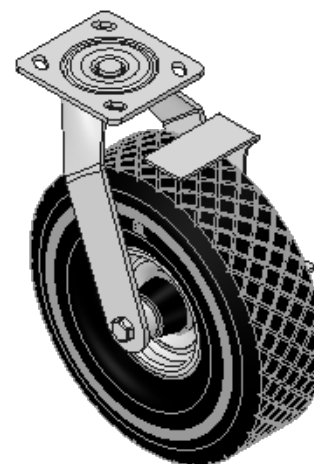
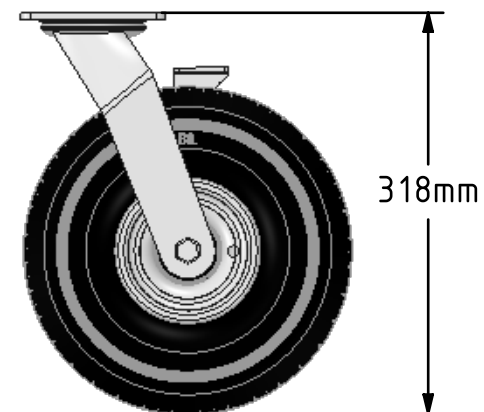
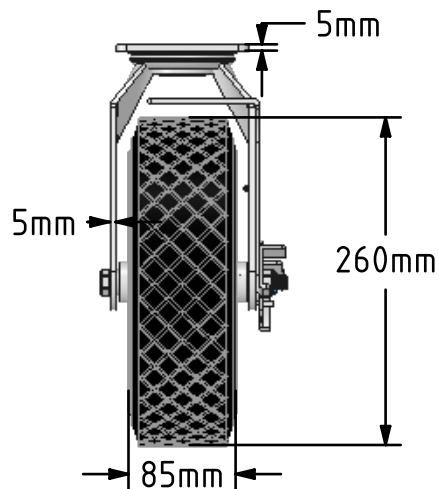
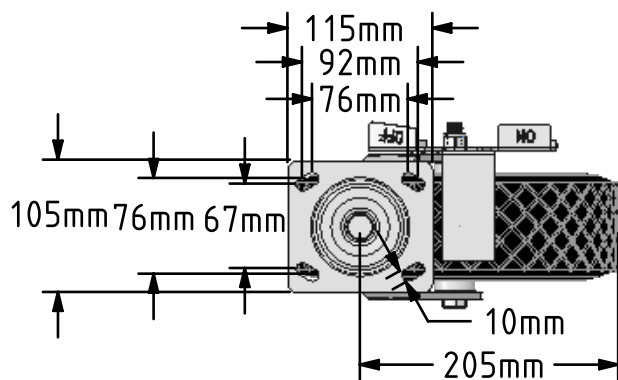
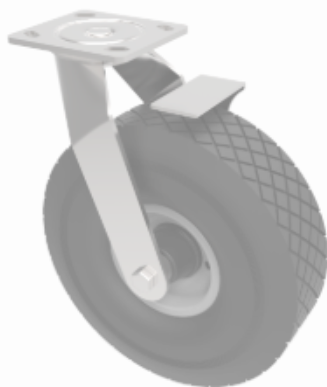


DRAWING DISCLAIMER
 COPYRIGHT OF THIS DRAWING IS RESERVED BY BIL GROUP LTD. IT IS ISSUED ON CONDITION THAT IT IS NOT REPRODUCED, COPIED, OR DISCLOSED TO A THIRD PARTY EITHER WHOLLY OR IN PART WITHOUT THE CONSENT IN WRITING OF BIL GROUP LTD.



Description:
 BZFPC260MPUBDBK

Fabricated swivel castor with a top plate fixing fitted with a black diamond pattern puncture proof tyre grey steel disc centred wheel with roller bearing and side fitting wheel brake. Wheel diameter 260, tread width 85mm, overall height 318mm, plate size 115mm x 105mm, hole centres 92mm x 67mm or 76mm x 76mm. Load capacity 150kg



	NAME	DATE
DRAWN	Matt	04/08/17
APPROVED BY	Chris	04/08/17
SCALE	1:6	04/08/17
WEIGHT	4.815kg	04/08/17



BIL Group Ltd, Porte Marsh Road, Calne
 Wiltshire, SN11 9BW, United Kingdom
 Tel +44 (0)1249 822 222 Fax: +44 (0)1249 822 300
 www.bilgroup.co.uk

TITLE

BZFPC260MPUBDBK

UNLESS OTHERWISE SPECIFIED DIMENSIONS ARE IN MILLIMETRES

Unspecified Tolerances
 Machining ± 0.25mm
 Fabrication ± 1mm

SIZE	DWG NO.	REV
A4	BILCW03BZFPC260MPUBDBK_01	1

FILE NAME BILCW03BZFPC260MPUBDBK_01.PDF SHEET 1 OF 1