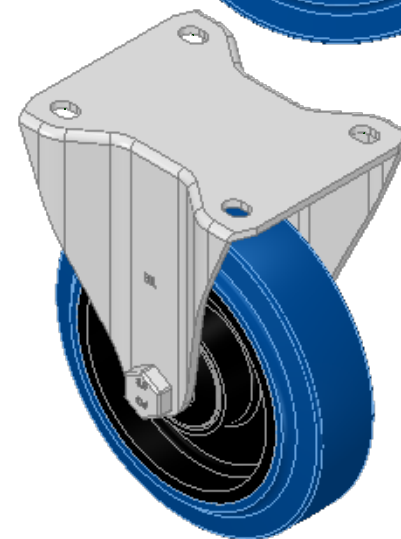
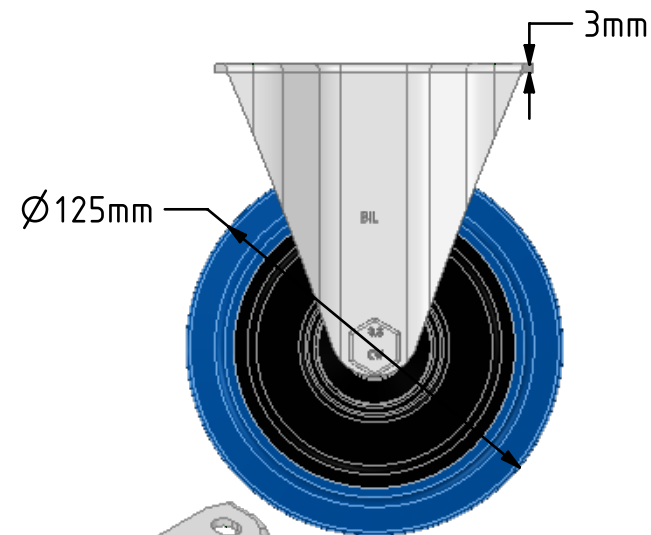
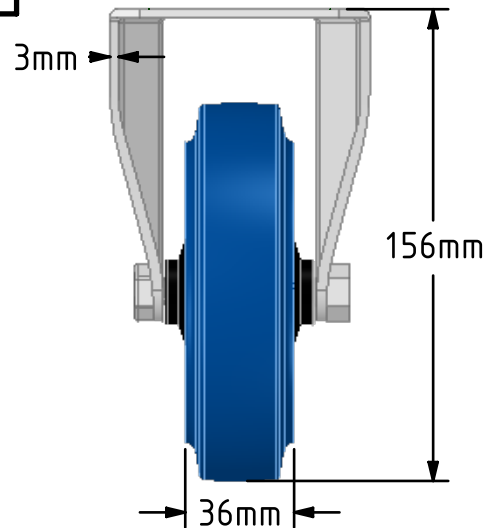
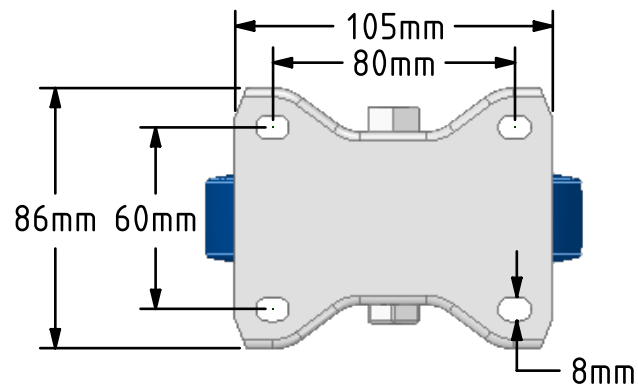
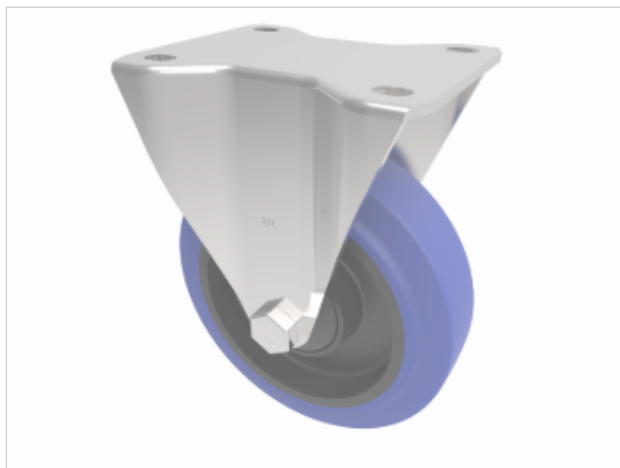


DRAWING DISCLAIMER
 COPYRIGHT OF THIS DRAWING IS RESERVED BY BIL GROUP LTD. IT IS ISSUED ON CONDITION THAT IT IS NOT REPRODUCED, COPIED, OR DISCLOSED TO A THIRD PARTY EITHER WHOLLY OR IN PART WITHOUT THE CONSENT IN WRITING OF BIL GROUP LTD.



Description:
 BZEHF125SRNBJ

Pressed steel fixed castor with a top plate fixing fitted with a blue 65 shore A elastic rubber tyre on a black nylon centred wheel with a single ball bearing and 2 retainer caps. Wheel diameter 125mm, tread width 36mm, overall height 156mm, top plate 105mm x 86mm, hole centres 80mm x 60mm. Load capacity 250kg.



	NAME	DATE
DRAWN	Matt	27/09/18
APPROVED BY	Chris	27/09/18
SCALE	2:5	27/09/18
WEIGHT	0.838kg	27/09/18



BIL Group Ltd, Porte Marsh Road, Calne
 Wiltshire, SN11 9BW, United Kingdom
 Tel +44 (0)1249 822 222 Fax: +44 (0)1249 822 300
 www.bilgroup.co.uk

TITLE		REV
BZEHF125SRNBJ		1
SIZE	DWG NO.	
A4	BILCW03BZEHF125SRNBJ_01	
FILE NAME	BILCW03BZEHF125SRNBJ_01.PDF SHEET 1 OF 1	

UNLESS OTHERWISE SPECIFIED DIMENSIONS ARE IN MILLIMETRES

Unspecified Tolerances
 Machining ± 0.25mm
 Fabrication ± 1mm