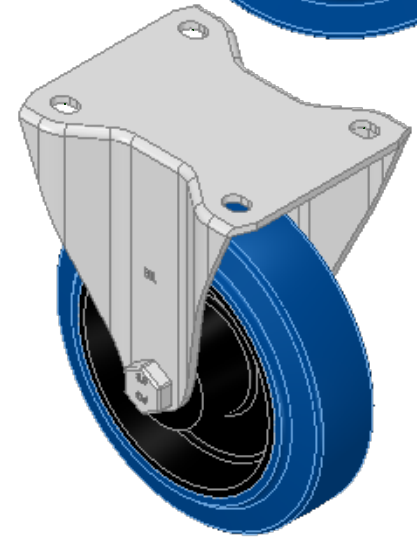
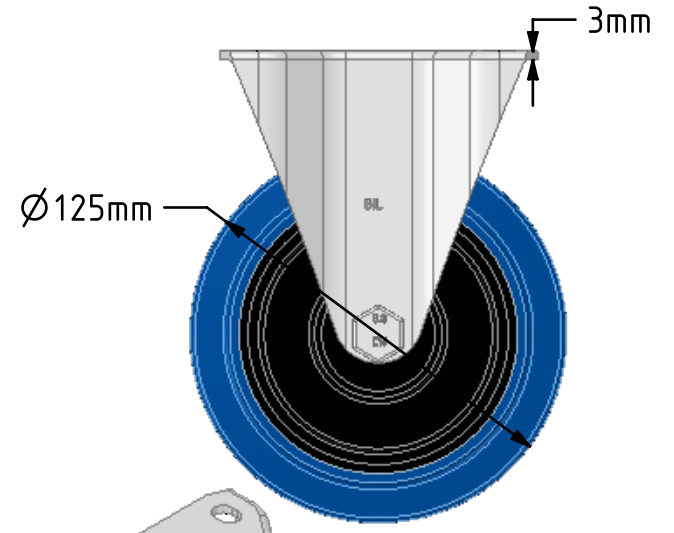
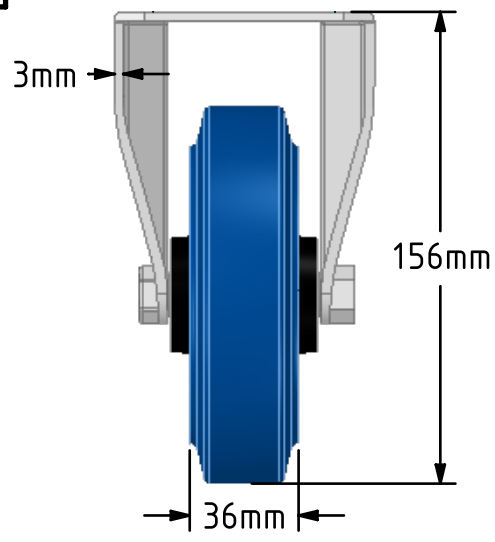
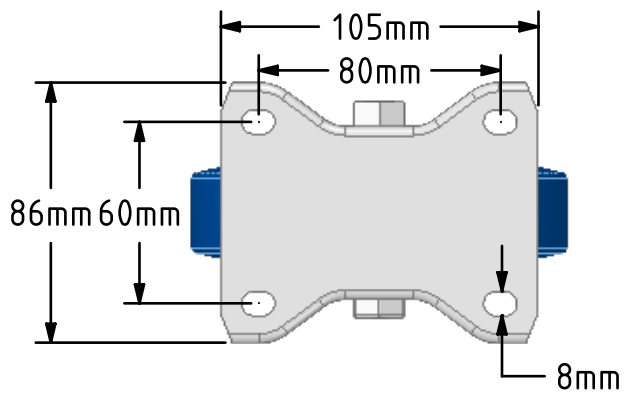
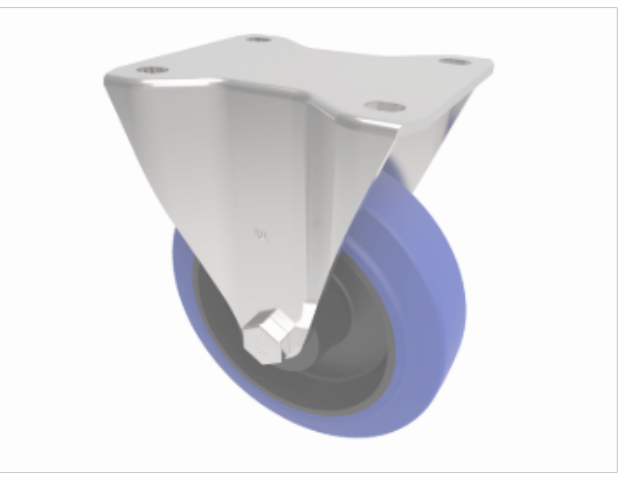


**DRAWING DISCLAIMER**  
 COPYRIGHT OF THIS DRAWING IS RESERVED BY BIL GROUP LTD. IT IS ISSUED ON CONDITION THAT IT IS NOT REPRODUCED, COPIED, OR DISCLOSED TO A THIRD PARTY EITHER WHOLLY OR IN PART WITHOUT THE CONSENT IN WRITING OF BIL GROUP LTD.



**Description:**  
 BZEHF125SRNB  
 Pressed steel fixed castor with a top plate fixing fitted with a blue 65 shore A elastic rubber tyre on a black nylon centre wheel with a roller bearing. Wheel diameter 125mm, tread width 36mm, overall height 156mm, top plate 105mm x 86mm, hole centres 80mm x 60mm. Load capacity 250kg.



	NAME	DATE
DRAWN	Matt	27/09/18
APPROVED BY	Chris	27/09/18
SCALE	2:5	27/09/18
WEIGHT	0.873kg	27/09/18

**BIL** BIL Group Ltd, Porte Marsh Road, Calne  
 Wiltshire, SN11 9BW, United Kingdom  
 Tel +44 (0)1249 822 222 Fax: +44 (0)1249 822 300  
 www.bilgroup.co.uk

UNLESS OTHERWISE SPECIFIED DIMENSIONS ARE IN MILLIMETRES  
 Unspecified Tolerances  
 Machining ± 0.25mm  
 Fabrication ± 1mm

TITLE		BZEHF125SRNB	
SIZE	DWG NO.	REV	
A4	BILCW03BZEHF125SRNB_01	1	
FILE NAME	BILCW03BZEHF125SRNB_01.PDF SHEET 1 OF 1		