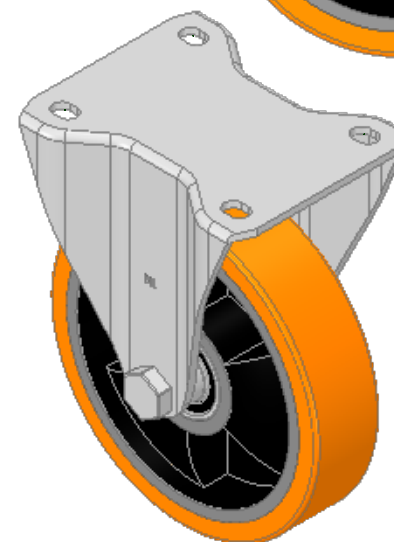
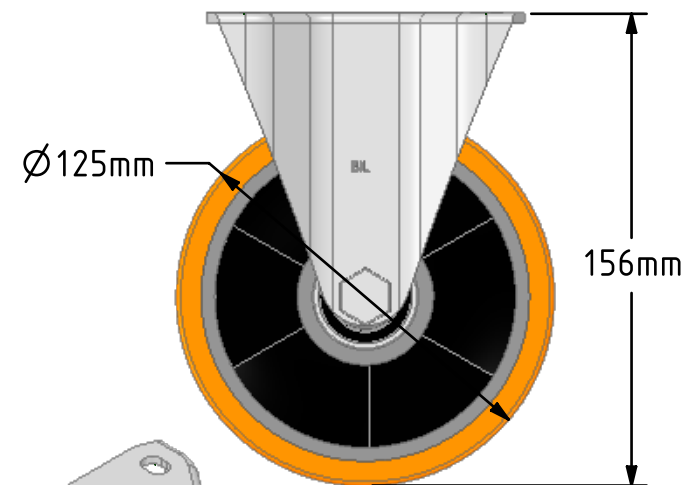
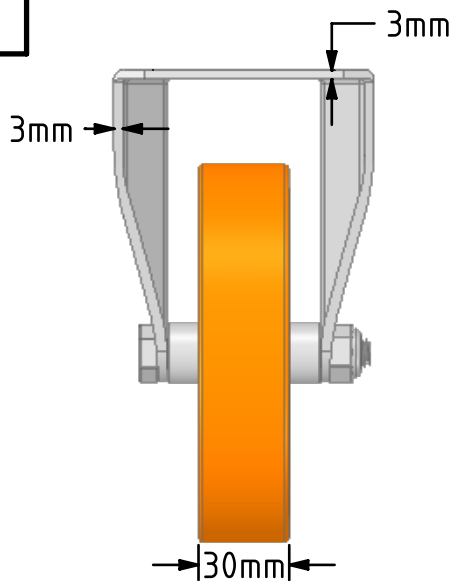
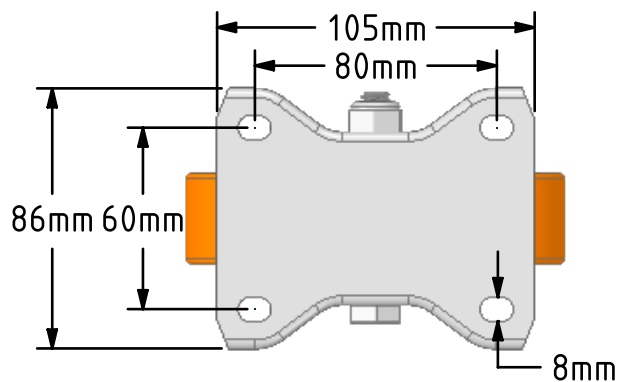


DRAWING DISCLAIMER
 COPYRIGHT OF THIS DRAWING IS RESERVED BY BIL GROUP LTD. IT IS ISSUED ON CONDITION THAT IT IS NOT REPRODUCED, COPIED, OR DISCLOSED TO A THIRD PARTY EITHER WHOLLY OR IN PART WITHOUT THE CONSENT IN WRITING OF BIL GROUP LTD.



Description:
 BZEHF125PTBJ

Pressed steel fixed castor with a top plate fixing fitted with a brown polyurethane tyre on a cast iron centred wheel with ball bearings. Wheel diameter 125mm, tread width 30mm, overall height 156mm, top plate 105mm x 86mm, hole centres 80mm x 60mm. Load capacity 300kg.



	NAME	DATE
DRAWN	Matt	02/10/18
APPROVED BY	Chris	02/10/18
SCALE	2:5	02/10/18
WEIGHT	1.48kg	02/10/18

UNLESS OTHERWISE SPECIFIED DIMENSIONS ARE IN MILLIMETRES

Unspecified Tolerances
 Machining ± 0.25mm
 Fabrication ± 1mm



BIL Group Ltd, Porte Marsh Road, Calne
 Wiltshire, SN11 9BW, United Kingdom
 Tel +44 (0)1249 822 222 Fax: +44 (0)1249 822 300
 www.bilgroup.co.uk

TITLE

BZEHF125PTBJ

SIZE DWG NO.

A4

BILCW03BZEHF125PTBJ__01

REV

1

FILE NAME

BILCW03BZEHF125PTBJ__01.PDF

SHEET 1 OF 1