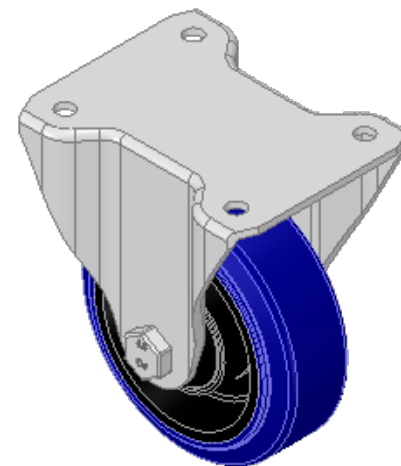
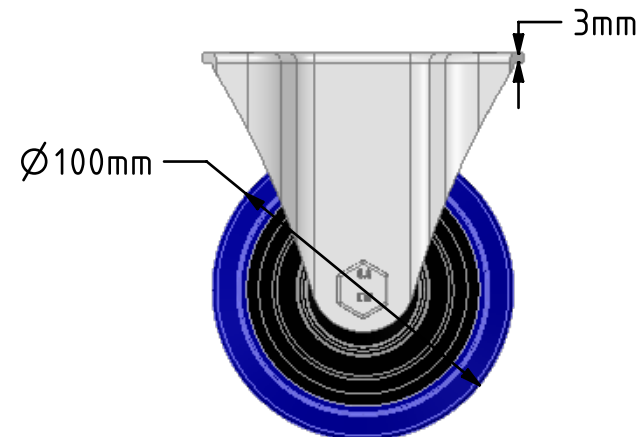
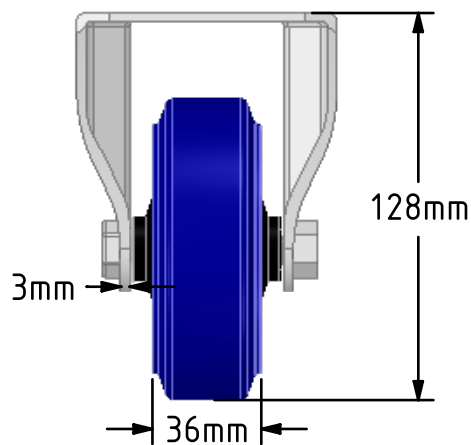
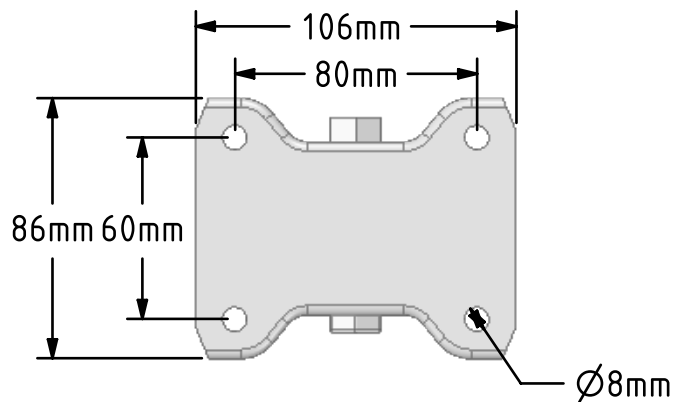
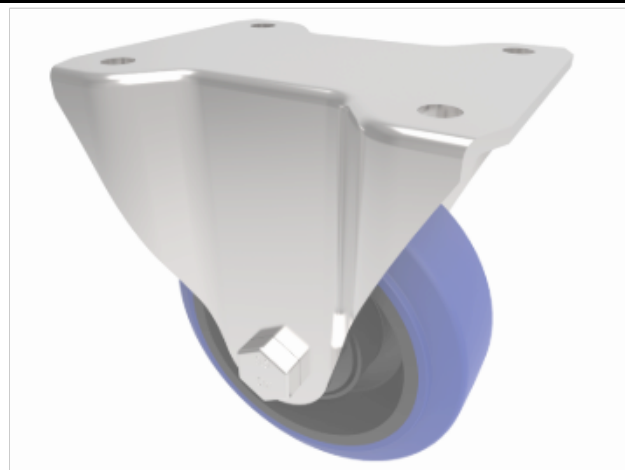


DRAWING DISCLAIMER
 COPYRIGHT OF THIS DRAWING IS RESERVED BY BIL GROUP LTD. IT IS ISSUED ON CONDITION THAT IT IS NOT REPRODUCED, COPIED, OR DISCLOSED TO A THIRD PARTY EITHER WHOLLY OR IN PART WITHOUT THE CONSENT IN WRITING OF BIL GROUP LTD.



Description:
 BZEHF100SRNB

Pressed steel fixed castor with flat top plate fixing fitted with a 65 shore A blue elastic rubber tyre on black nylon centre with ball bearing. Wheel diameter 100mm, tread width 36mm, overall height 128mm, plate size 105mm x 86mm, hole centres 80mm x 60mm. Load capacity 200kg. REACH compliant also PAH-Free rubber to confirm to EU-directive 2005/69/EC



	NAME	DATE
DRAWN	Matt	25/09/18
APPROVED BY	Chris	25/09/18
SCALE	2:5	25/09/18
WEIGHT	0.692kg	25/09/18

BIL BIL Group Ltd, Porte Marsh Road, Calne
 Wiltshire, SN11 9BW, United Kingdom
 Tel +44 (0)1249 822 222 Fax: +44 (0)1249 822 300
 www.bilgroup.co.uk

TITLE
BZEHF100SRNB

UNLESS OTHERWISE SPECIFIED DIMENSIONS ARE IN MILLIMETRES
 Unspecified Tolerances
 Machining ± 0.25mm
 Fabrication ± 1mm

SIZE	DWG NO.	REV
A4	BILCW03BZEHF100SRNB_01	1
FILE NAME	BILCW03BZEHF100SRNB_01.PDF SHEET 1 OF 1	