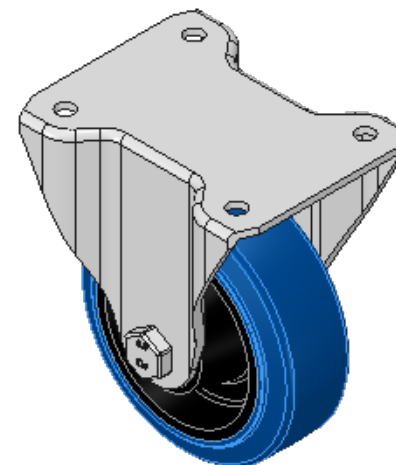
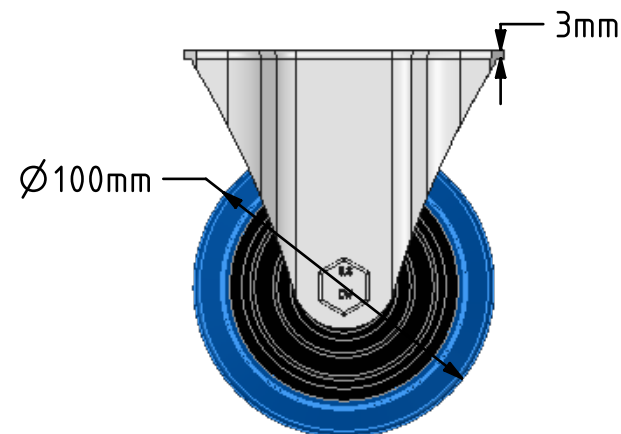
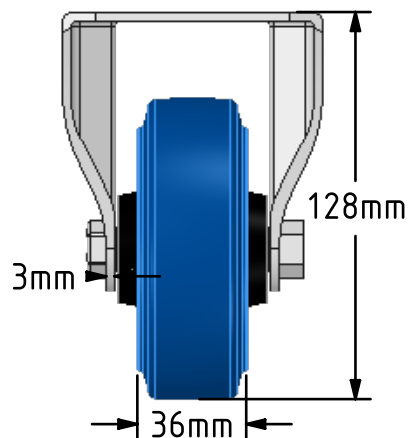
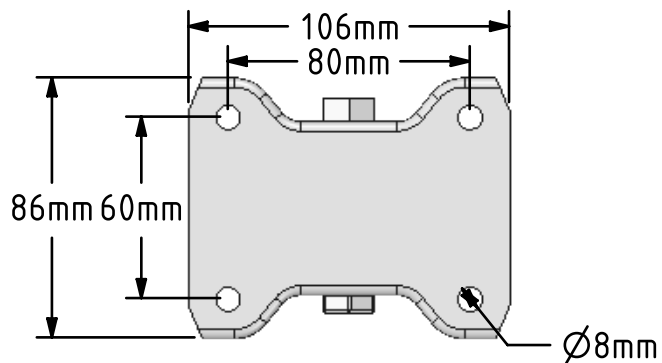
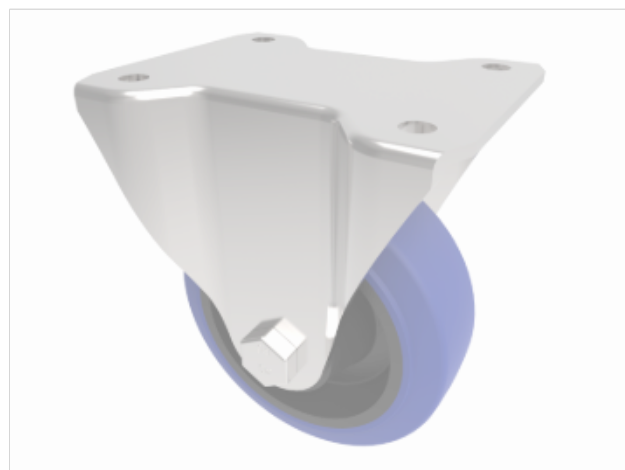



DRAWING DISCLAIMER  
 COPYRIGHT OF THIS DRAWING IS RESERVED BY BIL GROUP LTD. IT IS ISSUED ON CONDITION THAT IT IS NOT REPRODUCED, COPIED, OR DISCLOSED TO A THIRD PARTY EITHER WHOLLY OR IN PART WITHOUT THE CONSENT IN WRITING OF BIL GROUP LTD.



Description:  
 BZEHF100SRNB

Pressed steel fixed castor with flat top plate fixing fitted with a blue 65 shore A elastic rubber tyre on black nylon centre with roller bearing. Wheel diameter 100mm, tread width 36mm, overall height 128mm, plate size 105mm x 86mm, hole centres 80mm x 60mm. Load capacity 200kg. REACH compliant also PAH-Free rubber to confirm to EU-directive 2005/69/EC



|   | NAME    | DATE                           | BIL Group Ltd, Porte Marsh Road, Calne<br>Wiltshire, SN11 9BW, United Kingdom<br>Tel +44 (0)1249 822 222 Fax: +44 (0)1249 822 300<br>www.bilgroup.co.uk |  |
|---|---------|--------------------------------|---|--|
| DRAWN   | Matt    | 24/01/18                       |    |  |
| APPROVED BY   | Tim W   | 24/01/18                       |   |  |
| SCALE   | 2:5     | 24/01/18                       |   |  |
| WEIGHT  | 0.729kg | 24/01/18                       |   |  |
| UNLESS OTHERWISE SPECIFIED DIMENSIONS ARE IN MILLIMETRES          |         |                                | TITLE   |  |
| Unspecified Tolerances<br>Machining ± 0.25mm<br>Fabrication ± 1mm |         |                                | BZEHF100SRNB  |  |
| SIZE A4   |         | DWG NO. BILCW03BZEHF100SRNB_01 | REV 1   |  |
| FILE NAME BILCW03BZEHF100SRNB_01.PDF                              |         |                                | SHEET 1 OF 1  |  |