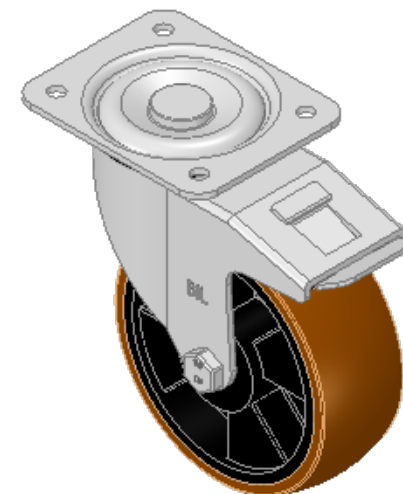
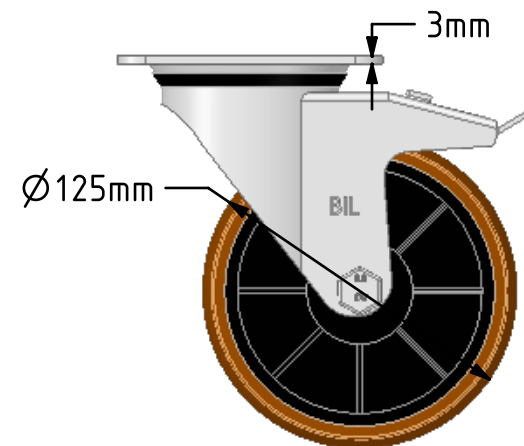
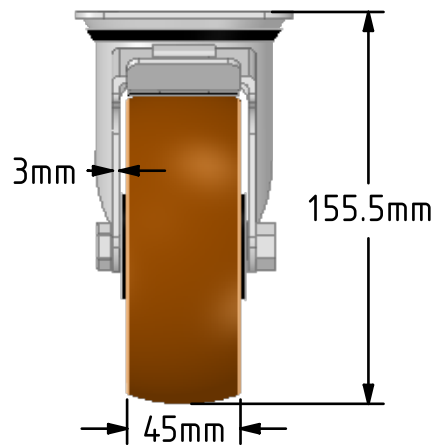
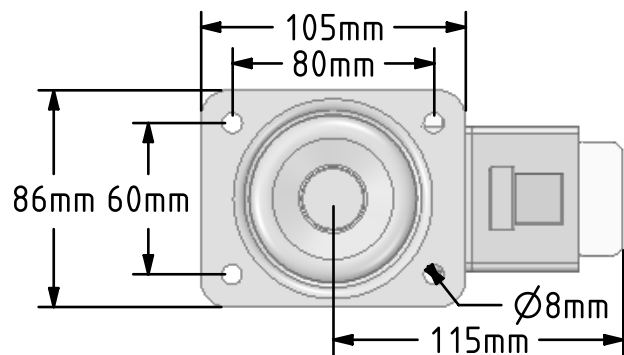


DRAWING DISCLAIMER  
 COPYRIGHT OF THIS DRAWING IS RESERVED BY BIL GROUP LTD. IT IS ISSUED ON CONDITION THAT IT IS NOT REPRODUCED, COPIED, OR DISCLOSED TO A THIRD PARTY EITHER WHOLLY OR IN PART WITHOUT THE CONSENT IN WRITING OF BIL GROUP LTD.



Description:  
 BZEH125XPNBSWB

Pressed steel swivel castor with a top plate fixing fitted with a brown polyurethane tyre on black nylon centred wheel with roller bearings and a total lock brake, Wheel diameter 125mm, tread width 45mm, overall height 155mm, top plate 105mm x 86mm, hole centres 80mm x 60mm. Load capacity 300kg



	NAME	DATE
DRAWN	Matt	02/10/18
APPROVED BY	Chris	02/10/18
SCALE	1:3	02/10/18
WEIGHT	1.382kg	02/10/18

UNLESS OTHERWISE SPECIFIED DIMENSIONS ARE IN MILLIMETRES

Unspecified Tolerances  
 Machining ± 0.25mm  
 Fabrication ± 1mm



BIL Group Ltd, Porte Marsh Road, Calne  
 Wiltshire, SN11 9BW, United Kingdom  
 Tel +44 (0)1249 822 222 Fax: +44 (0)1249 822 300  
 www.bilgroup.co.uk

TITLE

BZEH125XPNBSWB

SIZE	DWG NO.	REV
A4	BILCW03BZEH125XPNBSWB_02	2

FILE NAME BILCW03BZEH125XPNBSWB\_02.PDF SHEET 1 OF 1