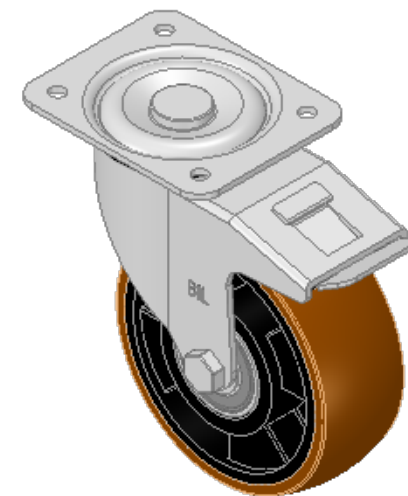
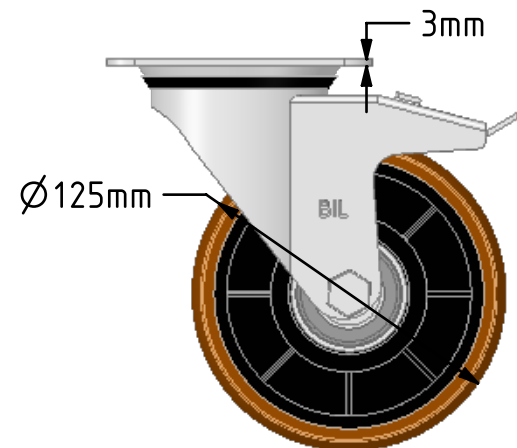
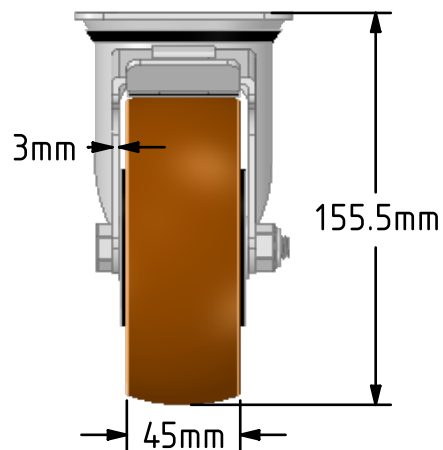
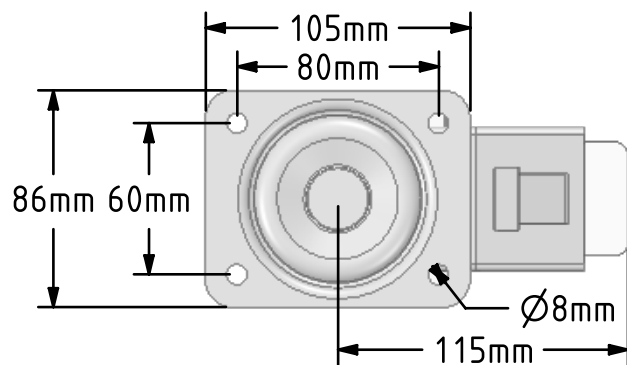


**DRAWING DISCLAIMER**

COPYRIGHT OF THIS DRAWING IS RESERVED BY BIL GROUP LTD. IT IS ISSUED ON CONDITION THAT IT IS NOT REPRODUCED, COPIED, OR DISCLOSED TO A THIRD PARTY EITHER WHOLLY OR IN PART WITHOUT THE CONSENT IN WRITING OF BIL GROUP LTD.

**Description:**

BZEH125XPNBJSWB

Pressed steel swivel castor with a top plate fixing fitted with a brown polyurethane tyre on black nylon centred wheel with ball bearings and a total lock brake. Wheel diameter 125mm, tread width 45mm, overall height 156mm, top plate 105mm x 86mm, hole centres 80mm x 60mm. Load capacity 300kg



	NAME	DATE
DRAWN	Matt	02/10/18
APPROVED BY	Chris	02/10/18
SCALE	1:3	02/10/18
WEIGHT	1.563kg	02/10/18

UNLESS OTHERWISE SPECIFIED DIMENSIONS ARE IN MILLIMETRES

Unspecified Tolerances  
Machining  $\pm 0.25\text{mm}$   
Fabrication  $\pm 1\text{mm}$



BIL Group Ltd, Porte Marsh Road, Calne  
Wiltshire, SN11 9BW, United Kingdom  
Tel +44 (0)1249 822 222 Fax: +44 (0)1249 822 300  
www.bilgroup.co.uk

TITLE

BZEH125XPNBJSWB

SIZE

DWG NO.

A4

BILCW03BZEH125XPNBJSWB\_01

REV

1

FILE NAME BILCW03BZEH125XPNBJSWB\_01.PDF

SHEET 1 OF 1