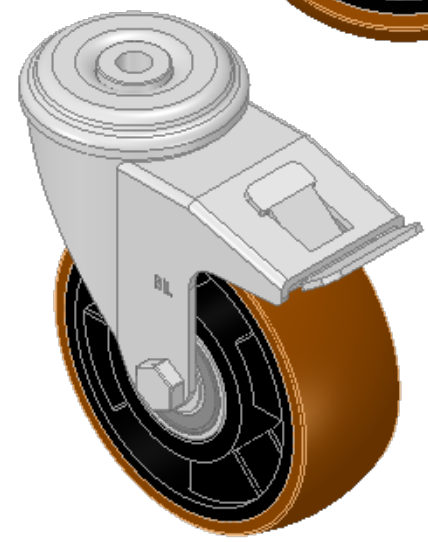
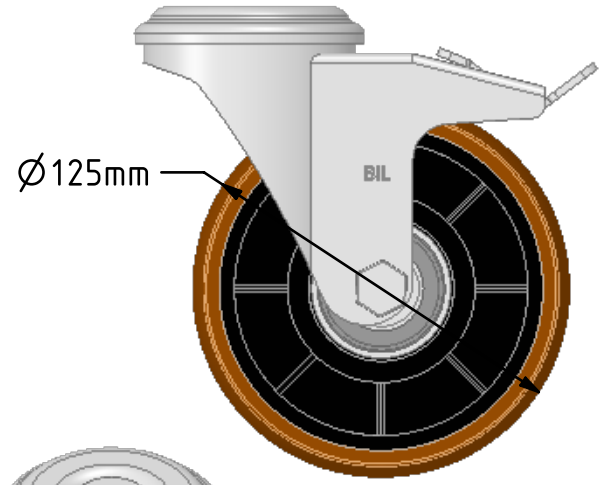
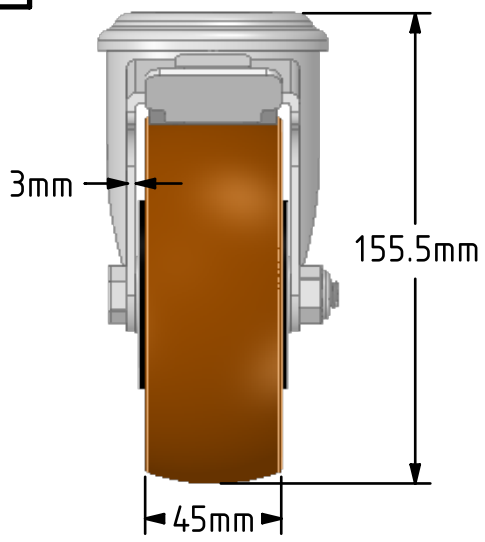
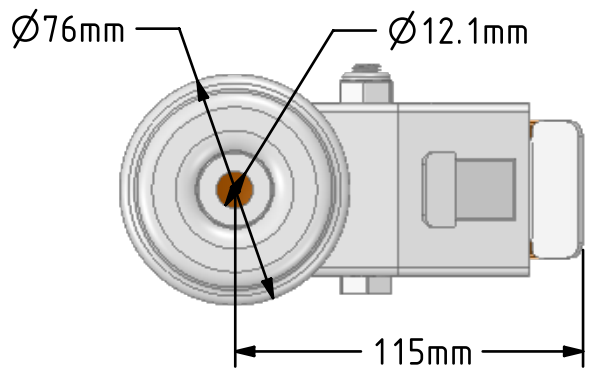


**DRAWING DISCLAIMER**  
 COPYRIGHT OF THIS DRAWING IS RESERVED BY BIL GROUP LTD. IT IS ISSUED ON CONDITION THAT IT IS NOT REPRODUCED, COPIED, OR DISCLOSED TO A THIRD PARTY EITHER WHOLLY OR IN PART WITHOUT THE CONSENT IN WRITING OF BIL GROUP LTD.



**Description:**  
 BZEH125XPNBJBH12SWB  
 Pressed steel swivel castor with a 12mm bolt hole fixing fitted with a brown polyurethane tyre on black nylon centred wheel with ball bearings and a total lock brake, Wheel diameter 125mm, tread width 45mm, overall height 155mm, Load capacity 300kg



	NAME	DATE
DRAWN	Matt	10/10/18
APPROVED BY	Kevin	10/10/18
SCALE	2.5	10/10/18
WEIGHT	1.474kg	10/10/18

**BIL** Group Ltd, Porte Marsh Road, Calne Wiltshire, SN11 9BW, United Kingdom  
 Tel +44 (0)1249 822 222 Fax: +44 (0)1249 822 300  
 www.bilgroup.co.uk

UNLESS OTHERWISE SPECIFIED DIMENSIONS ARE IN MILLIMETRES  
 Unspecified Tolerances  
 Machining ± 0.25mm  
 Fabrication ± 1mm

TITLE BZEH125XPNBJBH12SWB		
SIZE A4	DWG NO. BILCW03BZEH125XPNBJBH12SWB_01	REV 1
FILE NAME BILCW03BZEH125XPNBJBH12SWB_01.PDF SHEET 1 OF 1		