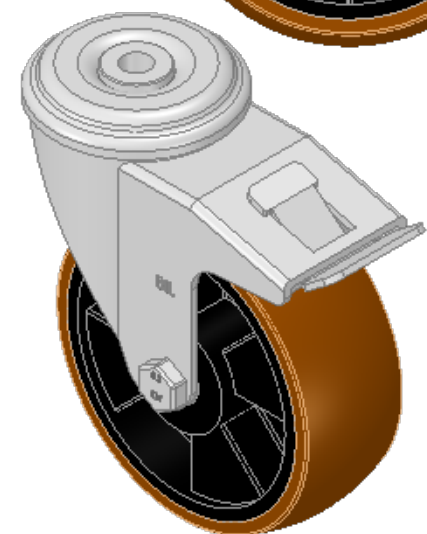
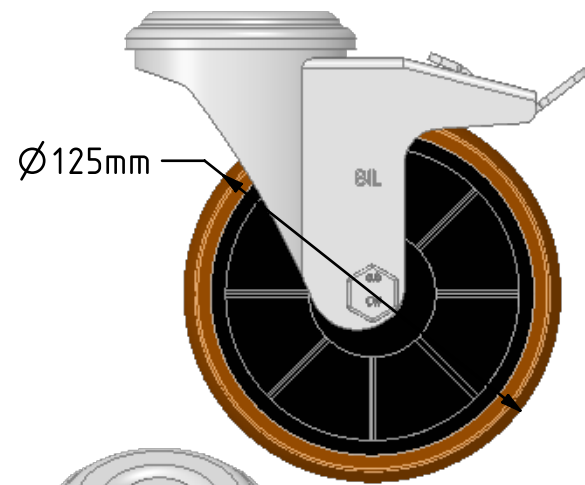
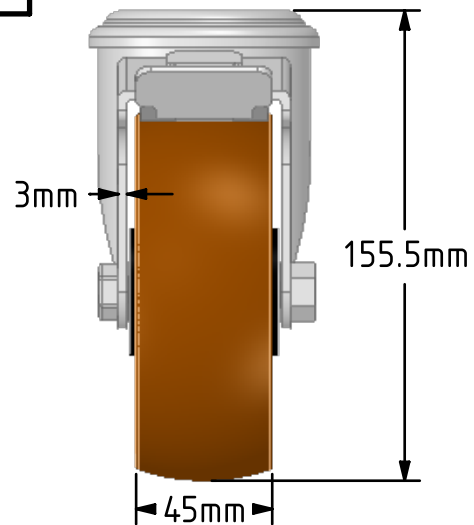
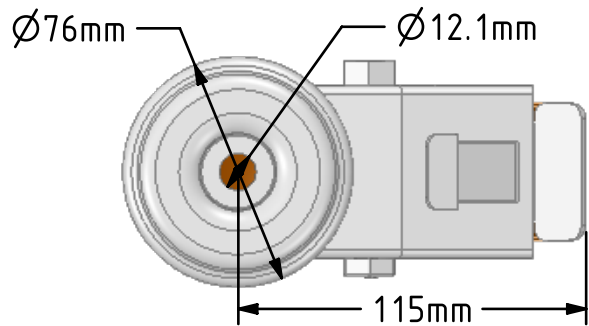


DRAWING DISCLAIMER  
 COPYRIGHT OF THIS DRAWING IS RESERVED BY BIL GROUP LTD. IT IS ISSUED ON CONDITION THAT IT IS NOT REPRODUCED, COPIED, OR DISCLOSED TO A THIRD PARTY EITHER WHOLLY OR IN PART WITHOUT THE CONSENT IN WRITING OF BIL GROUP LTD.



Description:  
**BZEH125XPNBH12SWB**  
 Pressed steel swivel castor with a 12mm bolt hole fitted with a brown polyurethane tyre on black nylon centred wheel with roller bearings and a total lock brake, Wheel diameter 125mm, tread width 45mm, overall height 156mm, Load capacity 300kg



	NAME	DATE
DRAWN	Matt	10/10/18
APPROVED BY	Kevin	10/10/18
SCALE	2.5	10/10/18
WEIGHT	1.293kg	10/10/18

 BIL Group Ltd, Porte Marsh Road, Calne Wiltshire, SN11 9BW, United Kingdom  
 Tel +44 (0)1249 822 222 Fax: +44 (0)1249 822 300  
 www.bilgroup.co.uk

TITLE  
**BZEH125XPNBH12SWB**

UNLESS OTHERWISE SPECIFIED DIMENSIONS ARE IN MILLIMETRES  
 Unspecified Tolerances  
 Machining ± 0.25mm  
 Fabrication ± 1mm

SIZE	DWG NO.	REV
A4	BILCW03BZEH125XPNBH12SWB_02	2
FILE NAME BILCW03BZEH125XPNBH12SWB_02.PDF		SHEET 1 OF 1