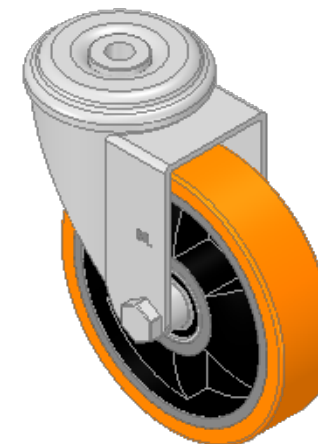
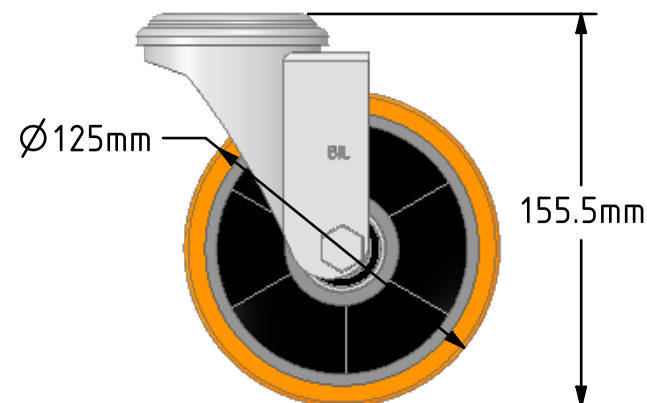
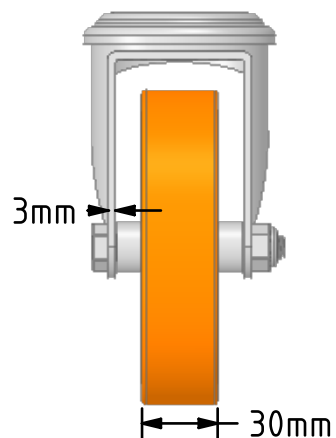
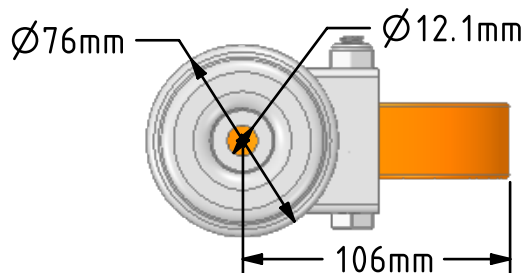



DRAWING DISCLAIMER
 COPYRIGHT OF THIS DRAWING IS RESERVED BY BIL GROUP LTD. IT IS ISSUED ON CONDITION THAT IT IS NOT REPRODUCED, COPIED, OR DISCLOSED TO A THIRD PARTY EITHER WHOLLY OR IN PART WITHOUT THE CONSENT IN WRITING OF BIL GROUP LTD.



Description:
 BZEH125PTBJBH12

Pressed steel swivel castor with a 12mm bolt hole fixing fitted with a brown polyurethane tyre on a cast iron centred wheel with ball bearings. Wheel diameter 125mm, tread width 30mm, overall height 155mm, Load capacity 300kg.



	NAME	DATE	BIL Group Ltd, Porte Marsh Road, Calne Wiltshire, SN11 9BW, United Kingdom Tel +44 (0)1249 822 222 Fax: +44 (0)1249 822 300 www.bilgroup.co.uk	
DRAWN	Matt	07/02/18	 TITLE BZEH125PTBJBH12	
APPROVED BY	Tim W	07/02/18		
SCALE	1:3	07/02/18		
WEIGHT	1.641kg	07/02/18		
UNLESS OTHERWISE SPECIFIED DIMENSIONS ARE IN MILLIMETRES			SIZE	DWG NO.
Unspecified Tolerances Machining ± 0.25mm Fabrication ± 1mm			A4	BILCW03BZEH125PTBJBH12__01
			REV	1
			FILE NAME	BILCW03BZEH125PTBJBH12__01.PDF SHEET 1 OF 1