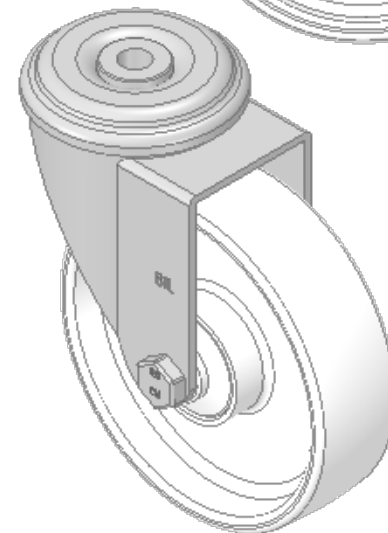
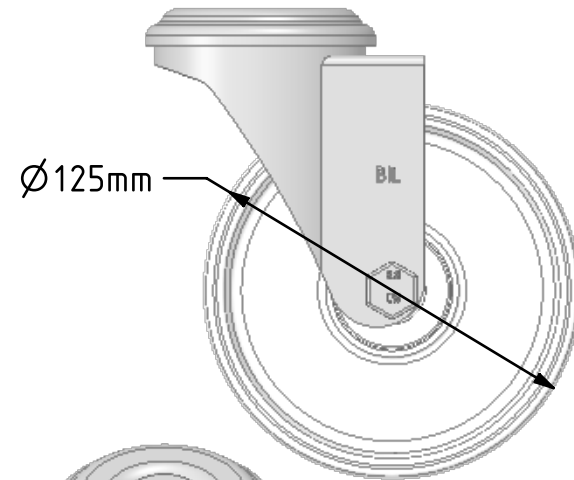
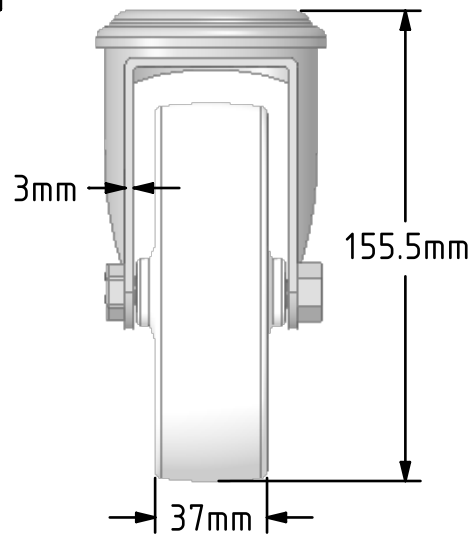
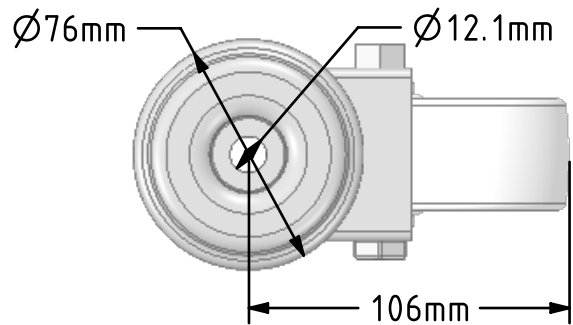



**DRAWING DISCLAIMER**  
 COPYRIGHT OF THIS DRAWING IS RESERVED BY BIL GROUP LTD. IT IS ISSUED ON CONDITION THAT IT IS NOT REPRODUCED, COPIED, OR DISCLOSED TO A THIRD PARTY EITHER WHOLLY OR IN PART WITHOUT THE CONSENT IN WRITING OF BIL GROUP LTD.



**Description:**  
**BZEH125NYBJBH12**  
 Pressed steel swivel castor with a 12mm bolt hole fitted with a white nylon wheel with ball bearings. Wheel diameter 125mm, tread width 37mm, overall height 155mm, Load capacity 300kg.



	NAME	DATE	 BIL Group Ltd, Porte Marsh Road, Calne Wiltshire, SN11 9BW, United Kingdom Tel +44 (0)1249 822 222 Fax: +44 (0)1249 822 300 www.bilgroup.co.uk
DRAWN	Matt	03/10/18	
APPROVED BY	Tim W	03/10/18	
SCALE	2:5	03/10/18	
WEIGHT	0.89kg	03/10/18	
UNLESS OTHERWISE SPECIFIED DIMENSIONS ARE IN MILLIMETRES  Unspecified Tolerances Machining ± 0.25mm Fabrication ± 1mm			TITLE <b>BZEH125NYBJBH12</b>
SIZE	DWG NO.	REV	
A4	BILCW03BZEH125NYBJBH12_01	1	
FILE NAME			BILCW03BZEH125NYBJBH12_01.PDF SHEET 1 OF 1