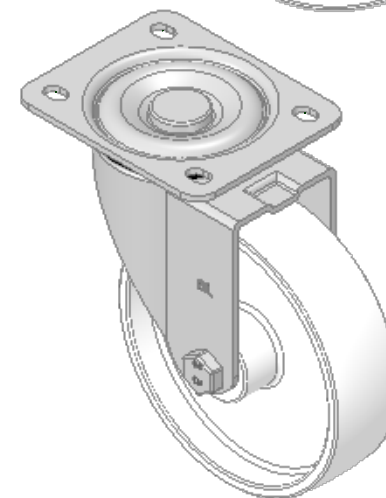
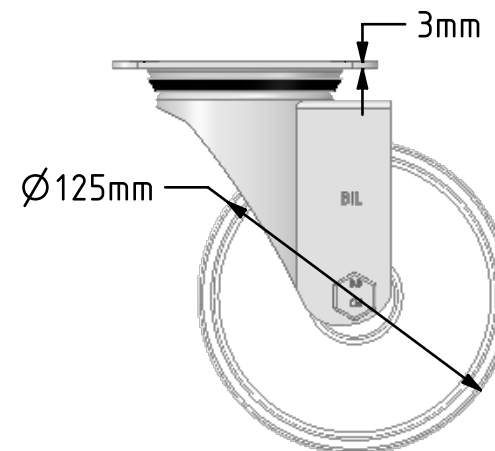
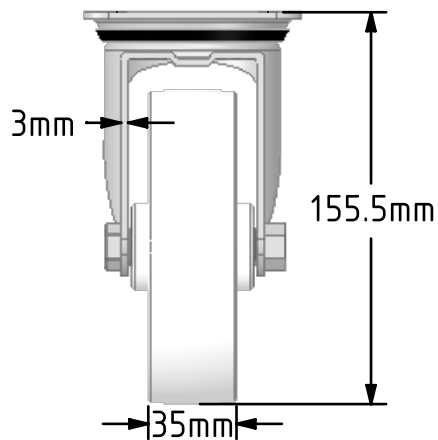
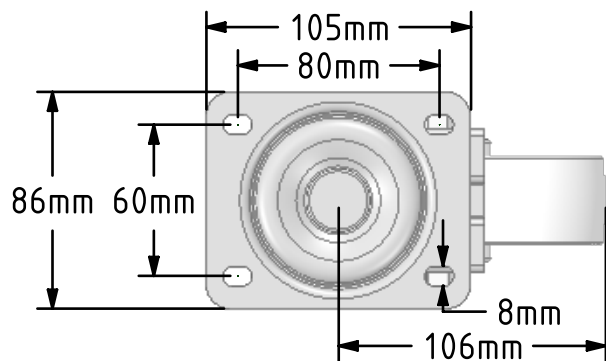
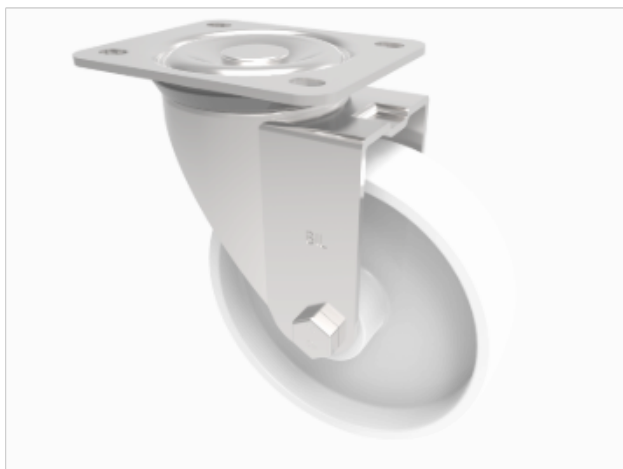


DRAWING DISCLAIMER  
 COPYRIGHT OF THIS DRAWING IS RESERVED BY BIL GROUP LTD. IT IS ISSUED ON CONDITION THAT IT IS NOT REPRODUCED, COPIED, OR DISCLOSED TO A THIRD PARTY EITHER WHOLLY OR IN PART WITHOUT THE CONSENT IN WRITING OF BIL GROUP LTD.



Description:  
 BZEH125NYB

Pressed steel swivel castor with a top plate fixing fitted with a white nylon wheel with a roller bearing. Wheel diameter 125mm, tread width 35mm, overall height 155mm, top plate 105mm x 86mm, hole centres 80mm x 60mm. Load capacity 300kg.



	NAME	DATE
DRAWN	Matt	24/09/18
APPROVED BY	Chris	24/09/18
SCALE	1:3	24/09/18
WEIGHT	0.961kg	24/09/18

 BIL Group Ltd, Porte Marsh Road, Calne  
 Wiltshire, SN11 9BW, United Kingdom  
 Tel +44 (0)1249 822 222 Fax: +44 (0)1249 822 300  
 www.bilgroup.co.uk

TITLE		REV
BZEH125NYB		1
SIZE	DWG NO.	FILE NAME
A4	BILCW03BZEH125NYB_01	BILCW03BZEH125NYB_01.PDF
		SHEET 1 OF 1

UNLESS OTHERWISE SPECIFIED DIMENSIONS ARE IN MILLIMETRES

Unspecified Tolerances  
 Machining ± 0.25mm  
 Fabrication ± 1mm