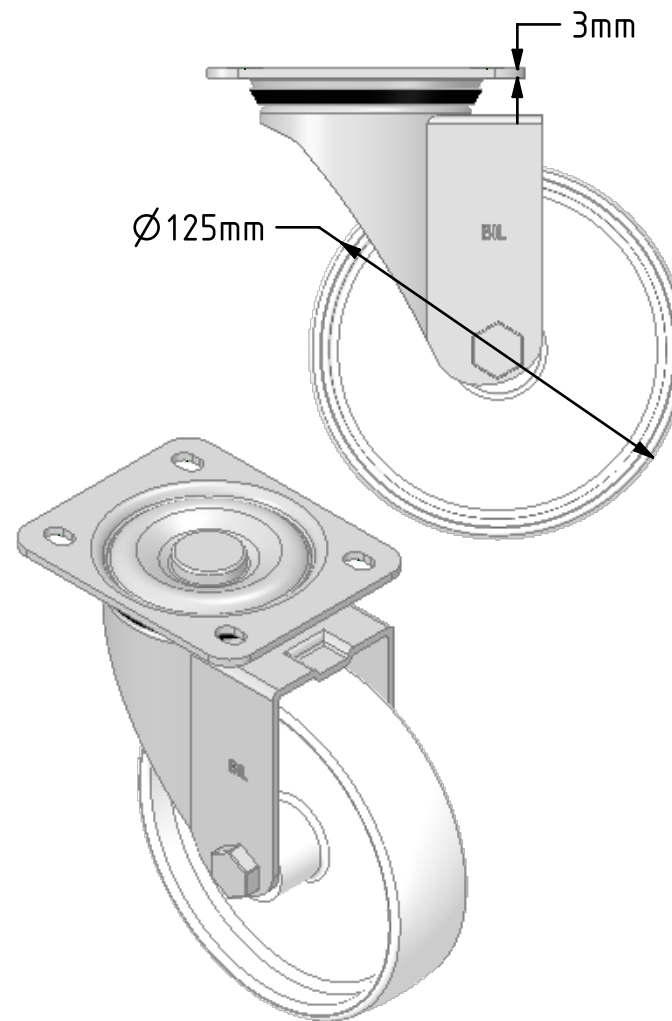
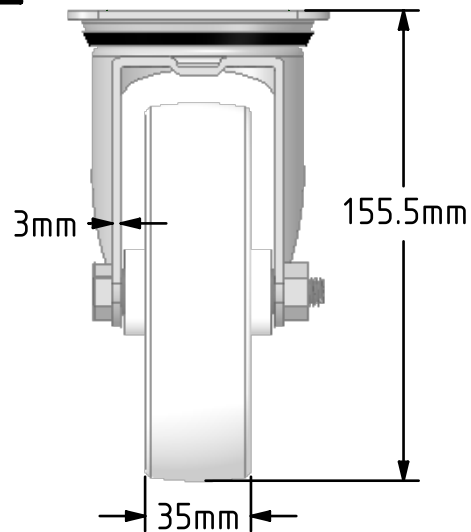
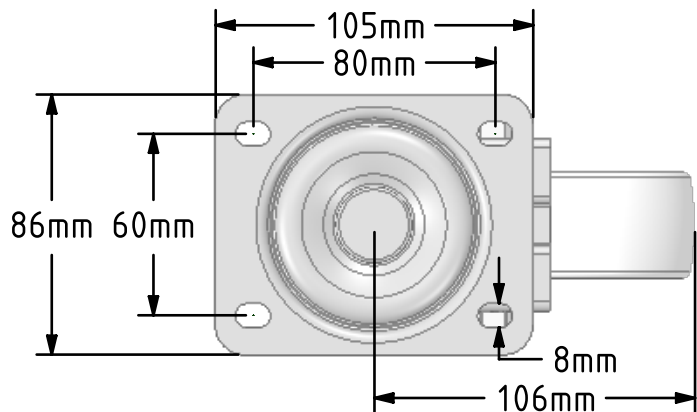
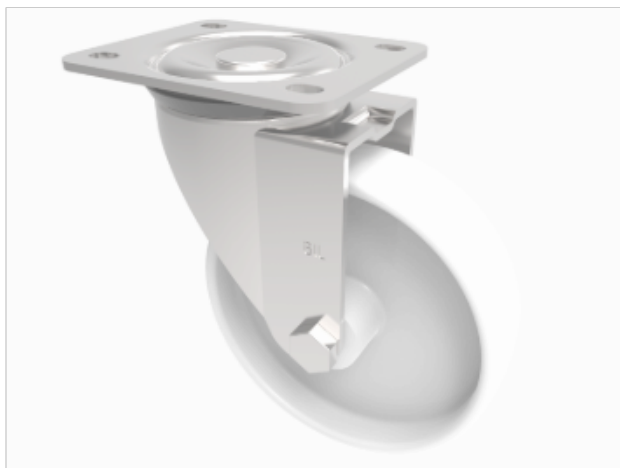



DRAWING DISCLAIMER
 COPYRIGHT OF THIS DRAWING IS RESERVED BY BIL GROUP LTD. IT IS ISSUED ON CONDITION THAT IT IS NOT REPRODUCED, COPIED, OR DISCLOSED TO A THIRD PARTY EITHER WHOLLY OR IN PART WITHOUT THE CONSENT IN WRITING OF BIL GROUP LTD.



Description:
 BZEH125NY

Pressed steel swivel castor with a top plate fixing fitted with white nylon wheel with a plain bearing. Wheel diameter 125mm, tread width 35mm, overall height 155mm, top plate 105mm x 86mm, hole centres 80mm x 60mm. Load capacity 300Kg.



	NAME	DATE	 BIL Group Ltd, Porte Marsh Road, Calne Wiltshire, SN11 9BW, United Kingdom Tel +44 (0)1249 822 222 Fax: +44 (0)1249 822 300 www.bilgroup.co.uk
DRAWN	Matt	17/07/18	
APPROVED BY	Tim W	17/07/18	
SCALE	2:5	17/07/18	
WEIGHT	0.94kg	17/07/18	
UNLESS OTHERWISE SPECIFIED DIMENSIONS ARE IN MILLIMETRES Unspecified Tolerances Machining ± 0.25mm Fabrication ± 1mm			TITLE <p style="text-align: center;">BZEH125NY</p>
SIZE	DWG NO.		REV
A4	BILCW03BZEH125NY__01		1
FILE NAME	BILCW03BZEH125NY__01.PDF		SHEET 1 OF 1