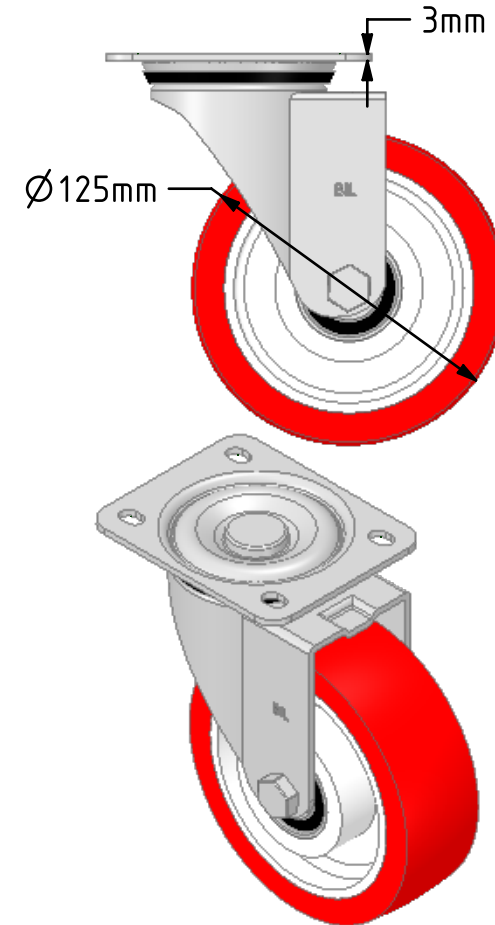
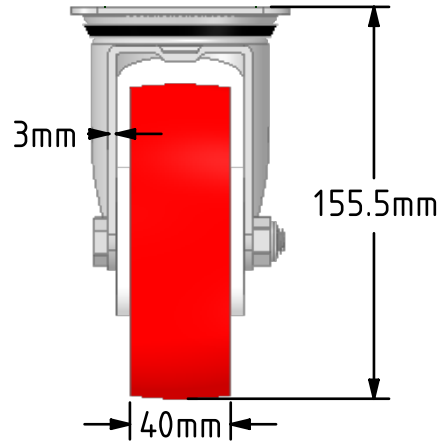
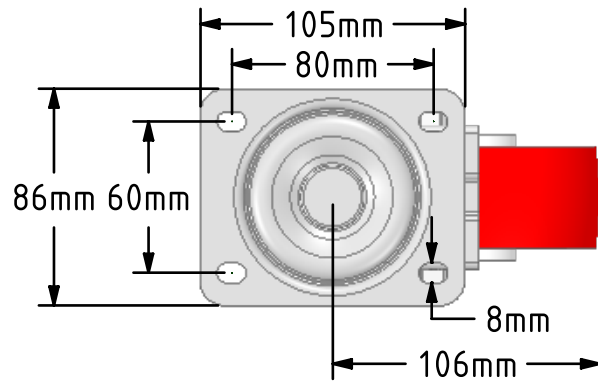


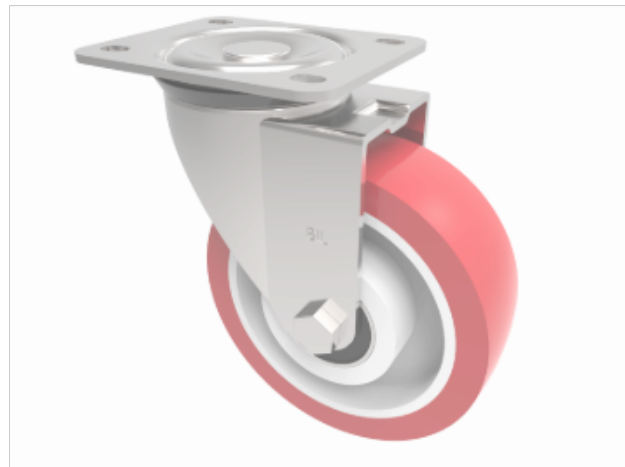
DRAWING DISCLAIMER


COPYRIGHT OF THIS DRAWING IS RESERVED BY BIL GROUP LTD. IT IS ISSUED ON CONDITION THAT IT IS NOT REPRODUCED, COPIED, OR DISCLOSED TO A THIRD PARTY EITHER WHOLLY OR IN PART WITHOUT THE CONSENT IN WRITING OF BIL GROUP LTD.

**Description:**

BZEH125NPBJ

Pressed steel swivel castor with a top plate fixing fitted with a red polyurethane tyre on a white nylon centred wheel with ball bearings. Wheel diameter 125mm, tread width 40mm, overall height 155mm, top plate 105mm x 86mm, hole centres 80mm x 60mm. Load capacity 300kg.



	NAME	DATE	<div></div> <div>BIL Group Ltd, Porte Marsh Road, Calne Wiltshire, SN11 9BW, United Kingdom Tel +44 (0)1249 822 222 Fax: +44 (0)1249 822 300 www.bilgroup.co.uk</div>		
DRAWN	Matt	01/10/18			
APPROVED BY	Chris	01/10/18			
SCALE	1:3	01/10/18			
WEIGHT	1.338kg	01/10/18			
<div>UNLESS OTHERWISE SPECIFIED DIMENSIONS ARE IN MILLIMETRES</div> <div>Unspecified Tolerances Machining ± 0.25mm Fabrication ± 1mm</div>			TITLE		
			BZEH125NPBJ		
			SIZE	DWG NO.	REV
			A4	BILCW03BZEH125NPBJ_01	1
			FILE NAME		BILCW03BZEH125NPBJ_01.PDF
					SHEET 1 OF 1