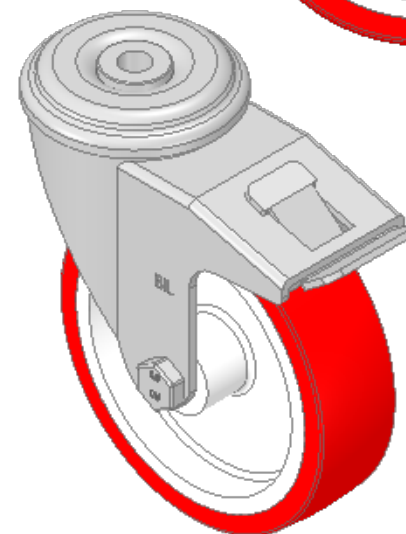
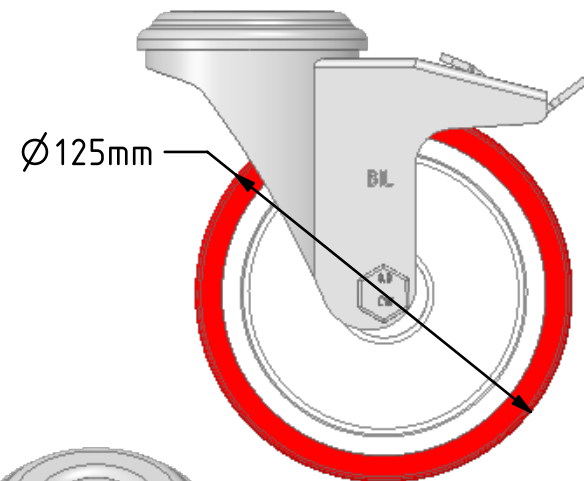
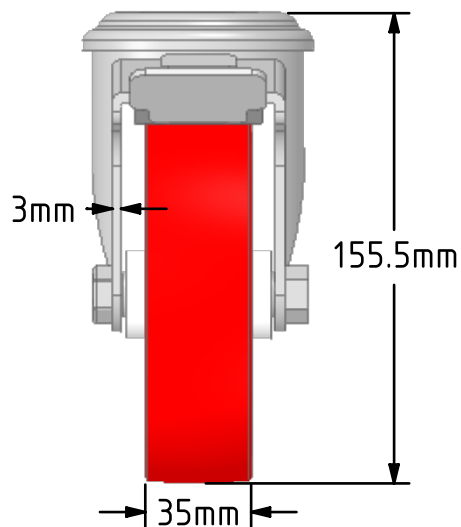
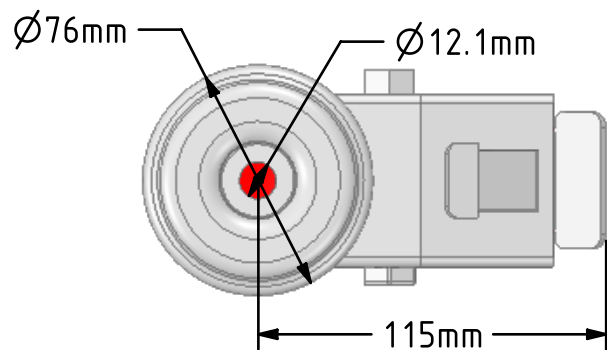


DRAWING DISCLAIMER  
 COPYRIGHT OF THIS DRAWING IS RESERVED BY BIL GROUP LTD. IT IS ISSUED ON CONDITION THAT IT IS NOT REPRODUCED, COPIED, OR DISCLOSED TO A THIRD PARTY EITHER WHOLLY OR IN PART WITHOUT THE CONSENT IN WRITING OF BIL GROUP LTD.



Description:  
 BZEH125NPBH12SWB

Pressed steel swivel castor with a 12mm bolt hole fixing fitted with a red polyurethane tyre on a white nylon centred wheel with a plain bearing and total lock brake. Wheel diameter 125mm, tread width 35mm, overall height 155mm, Load capacity 300kg.



	NAME	DATE
DRAWN	Matt	09/10/18
APPROVED BY	Kevin	09/10/18
SCALE	2:5	09/10/18
WEIGHT	1.106kg	09/10/18

UNLESS OTHERWISE SPECIFIED DIMENSIONS ARE IN MILLIMETRES  
 Unspecified Tolerances  
 Machining ± 0.25mm  
 Fabrication ± 1mm

 BIL Group Ltd, Porte Marsh Road, Calne Wiltshire, SN11 9BW, United Kingdom  
 Tel +44 (0)1249 822 222 Fax: +44 (0)1249 822 300  
 www.bilgroup.co.uk

TITLE  
**BZEH125NPBH12SWB**

SIZE	DWG NO.	REV
A4	BILCW03BZEH125NPBH12SWB_01	1

FILE NAME BILCW03BZEH125NPBH12SWB\_01.PDF SHEET 1 OF 1