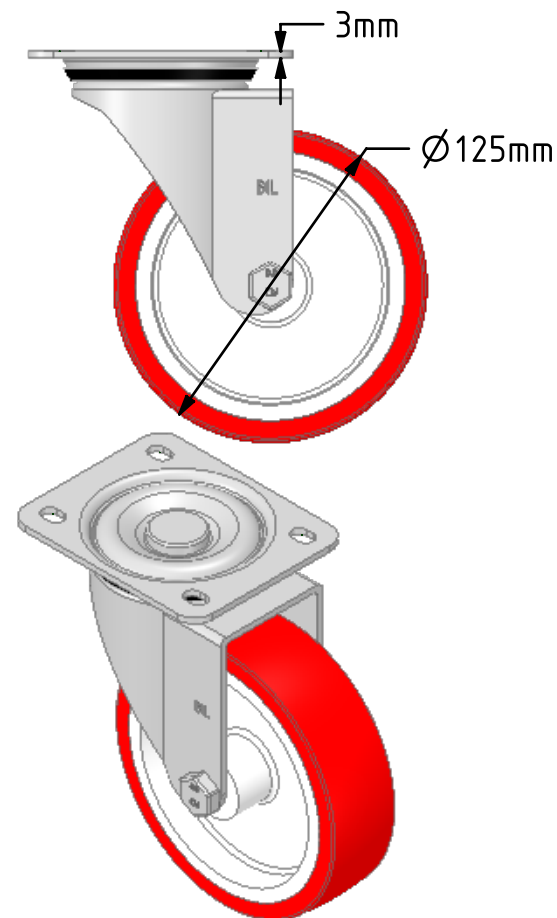
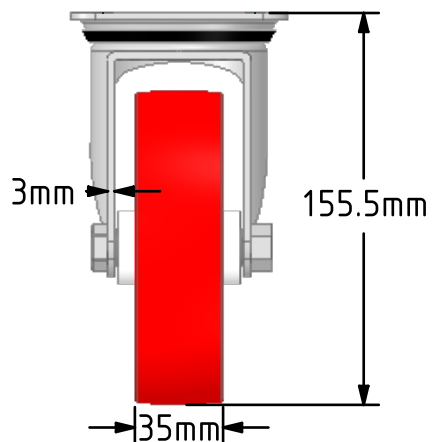
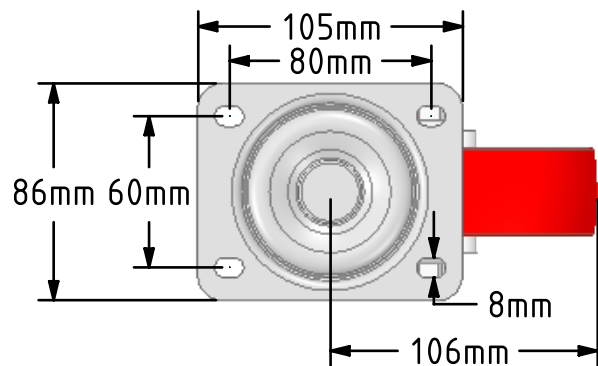
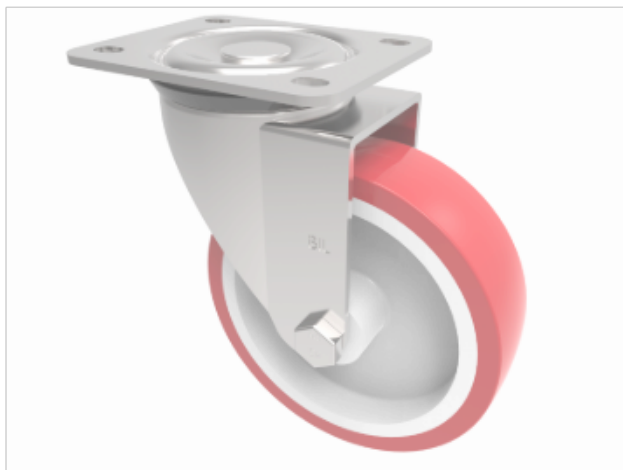



**DRAWING DISCLAIMER**

COPYRIGHT OF THIS DRAWING IS RESERVED BY BIL GROUP LTD. IT IS ISSUED ON CONDITION THAT IT IS NOT REPRODUCED, COPIED, OR DISCLOSED TO A THIRD PARTY EITHER WHOLLY OR IN PART WITHOUT THE CONSENT IN WRITING OF BIL GROUP LTD.

**Description:****BZEH125NP**

Pressed steel swivel castor with top plate fixing fitted with a red polyurethane tyred on a white nylon centred wheel with a plain bearing. Wheel diameter 125mm, tread width 35mm, overall height 155mm, top plate 105mm x 86mm, hole centres 80mm x 60mm. Load capacity 300kg.



	NAME	DATE	 BIL Group Ltd, Porte Marsh Road, Calne Wiltshire, SN11 9BW, United Kingdom Tel +44 (0)1249 822 222 Fax: +44 (0)1249 822 300 www.bilgroup.co.uk		
DRAWN	Matt	26/01/18			
APPROVED BY	Chris	26/01/18	TITLE <b>BZEH125NP</b>		
SCALE	1:3	26/01/18			
WEIGHT	1.031kg	26/01/18	SIZE DWG NO. A4 BILCW03BZEH125NP__01		
UNLESS OTHERWISE SPECIFIED DIMENSIONS ARE IN MILLIMETRES					REV 1
Unspecified Tolerances Machining ± 0.25mm Fabrication ± 1mm			FILE NAME BILCW03BZEH125NP__01.PDF SHEET 1 OF 1		