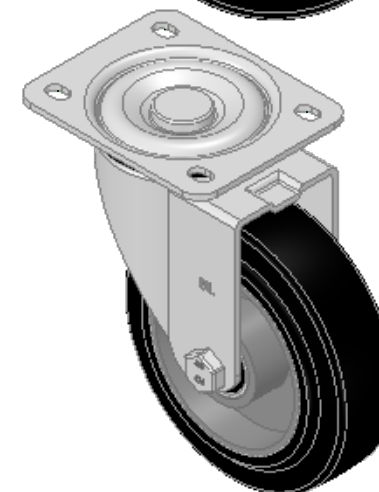
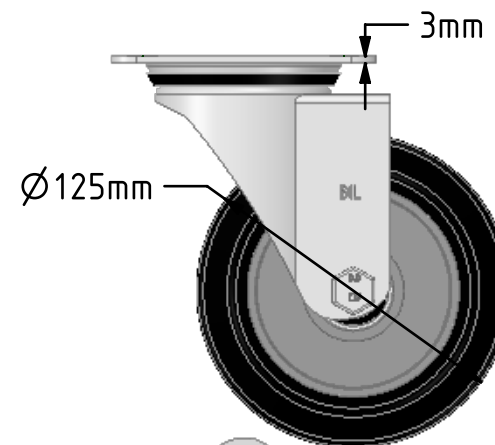
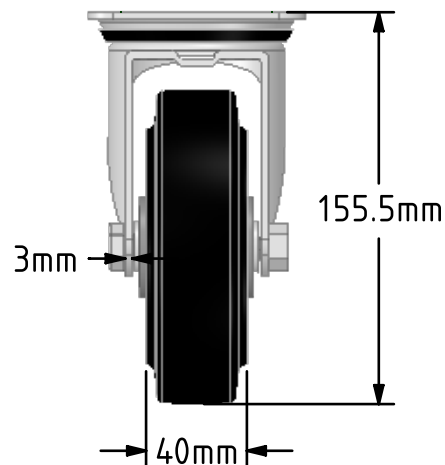
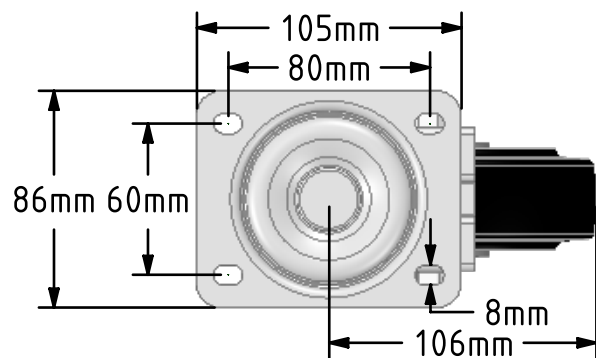


DRAWING DISCLAIMER
 COPYRIGHT OF THIS DRAWING IS RESERVED BY BIL GROUP LTD. IT IS ISSUED ON CONDITION THAT IT IS NOT REPRODUCED, COPIED, OR DISCLOSED TO A THIRD PARTY EITHER WHOLLY OR IN PART WITHOUT THE CONSENT IN WRITING OF BIL GROUP LTD.



Description:
 BZEH125ERBJ

Pressed steel swivel castor with a top plate fixing with a black elastic rubber tyre wheel with a aluminium centre with ball bearing. Wheel diameter 125mm, tread width 40mm, overall height 155mm, top plate 105mm x 86mm, hole centres 80mm x 60mm. Load capacity 250kg.REACH compliant also PAH-Free rubber to confirm to EU-directive 2005/69/EC



	NAME	DATE
DRAWN	Matt	28/09/18
APPROVED BY	Chris	28/09/18
SCALE	1:3	28/09/18
WEIGHT	1.305kg	28/09/18

 BIL Group Ltd, Porte Marsh Road, Calne
 Wiltshire, SN11 9BW, United Kingdom
 Tel +44 (0)1249 822 222 Fax: +44 (0)1249 822 300
 www.bilgroup.co.uk

TITLE		REV
BZEH125ERBJ		1
SIZE	DWG NO.	FILE NAME
A4	BILCW03BZEH125ERBJ_01	BILCW03BZEH125ERBJ_01.PDF
UNLESS OTHERWISE SPECIFIED DIMENSIONS ARE IN MILLIMETRES		SHEET 1 OF 1
Unspecified Tolerances Machining ± 0.25mm Fabrication ± 1mm		