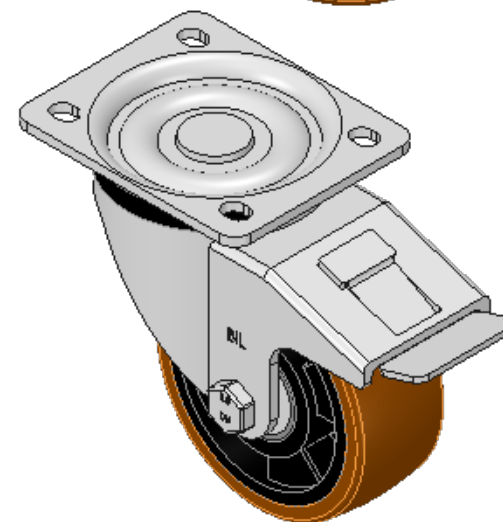
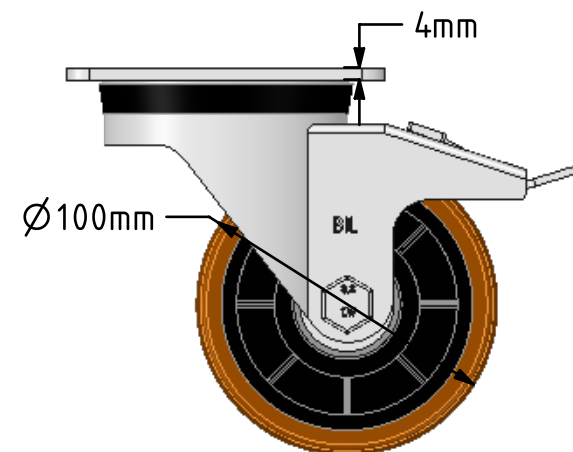
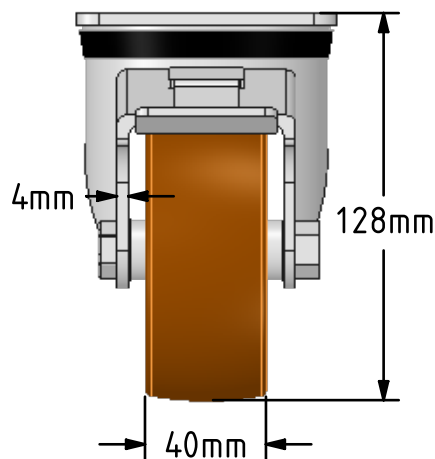
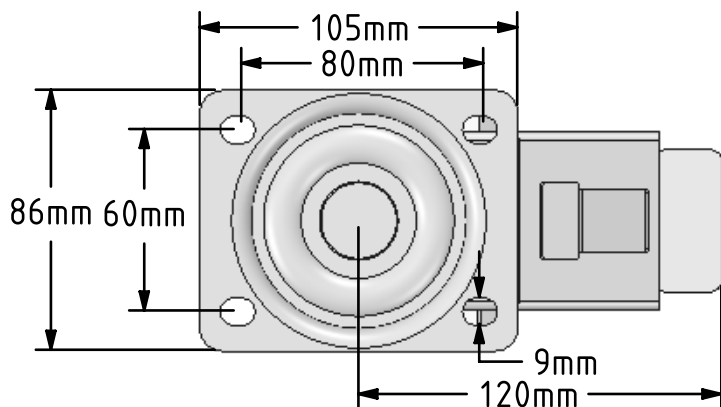


DRAWING DISCLAIMER  
 COPYRIGHT OF THIS DRAWING IS RESERVED BY BIL GROUP LTD. IT IS ISSUED ON CONDITION THAT IT IS NOT REPRODUCED, COPIED, OR DISCLOSED TO A THIRD PARTY EITHER WHOLLY OR IN PART WITHOUT THE CONSENT IN WRITING OF BIL GROUP LTD.



Description:  
 BZH100XPBJSWB

Pressed steel swivel castor with a top plate fixing fitted with a brown polyurethane tyre on black nylon centred wheel with ball bearings and total lock brake. Wheel diameter 100mm, tread width 40mm, overall height 128mm, top plate 105mm x 86mm, hole centres 80mm x 60mm. Load capacity 300kg



	NAME	DATE
DRAWN	Matt	05/02/18
APPROVED BY	Kevin	05/02/18
SCALE	2:5	05/02/18
WEIGHT	1.38kg	05/02/18

UNLESS OTHERWISE SPECIFIED DIMENSIONS ARE IN MILLIMETRES

Unspecified Tolerances  
 Machining ± 0.25mm  
 Fabrication ± 1mm



BIL Group Ltd, Porte Marsh Road, Calne  
 Wiltshire, SN11 9BW, United Kingdom  
 Tel +44 (0)1249 822 222 Fax: +44 (0)1249 822 300  
 www.bilgroup.co.uk

TITLE

BZH100XPBJSWB

SIZE DWG NO.

A4

BILCW03BZE100XPBJSWB\_02

REV

2

FILE NAME BILCW03BZE100XPBJSWB\_02.PDF SHEET 1 OF 1