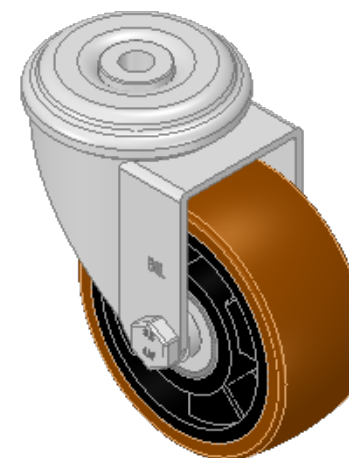
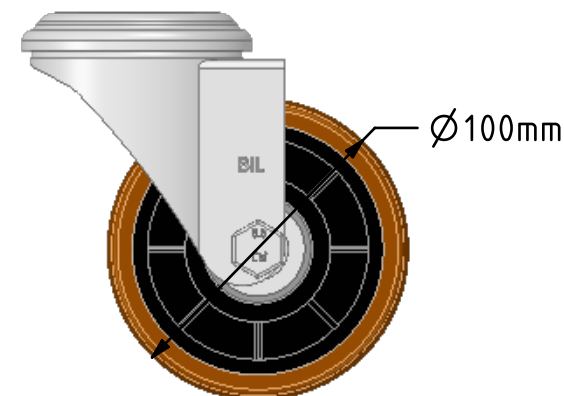
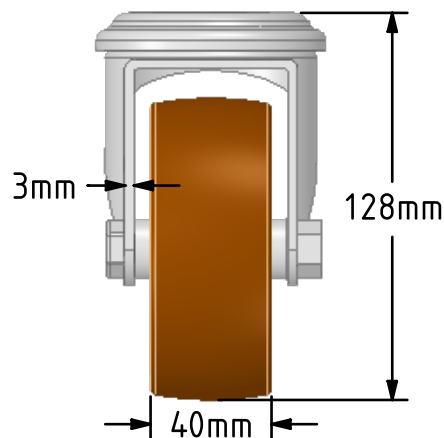
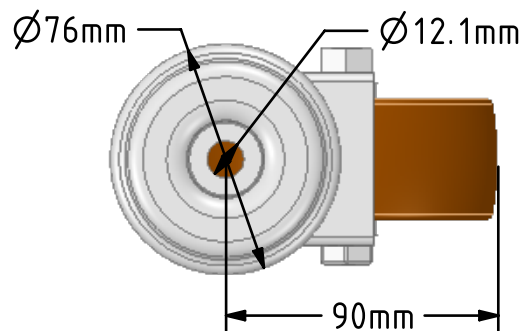


DRAWING DISCLAIMER
 COPYRIGHT OF THIS DRAWING IS RESERVED BY BIL GROUP LTD. IT IS ISSUED ON CONDITION THAT IT IS NOT REPRODUCED, COPIED, OR DISCLOSED TO A THIRD PARTY EITHER WHOLLY OR IN PART WITHOUT THE CONSENT IN WRITING OF BIL GROUP LTD.



Description:
 BZEH100XPNBJBH12

Pressed steel swivel castor with a top plate fixing fitted with a brown polyurethane tyre on black nylon centred wheel with ball bearings. Wheel diameter 100mm, tread width 40mm, overall height 128mm, Load capacity 300kg



	NAME	DATE
DRAWN	Matt	29/01/18
APPROVED BY	Chris	29/01/18
SCALE	2:5	29/01/18
WEIGHT	0.986kg	29/01/18

UNLESS OTHERWISE SPECIFIED DIMENSIONS ARE IN MILLIMETRES
 Unspecified Tolerances
 Machining ± 0.25mm
 Fabrication ± 1mm

 BIL Group Ltd, Porte Marsh Road, Calne Wiltshire, SN11 9BW, United Kingdom
 Tel +44 (0)1249 822 222 Fax: +44 (0)1249 822 300
 www.bilgroup.co.uk

TITLE		
BZEH100XPNBJBH12		
SIZE	DWG NO.	REV
A4	BILCW03BZEH100XPNBJBH12__02	2
FILE NAME BILCW03BZEH100XPNBJBH12__02.PDF SHEET 1 OF 1		