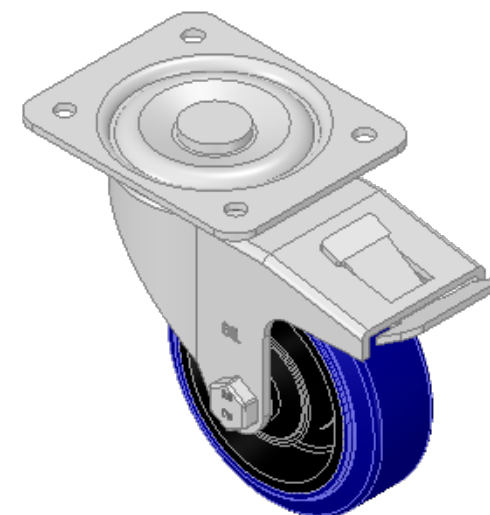
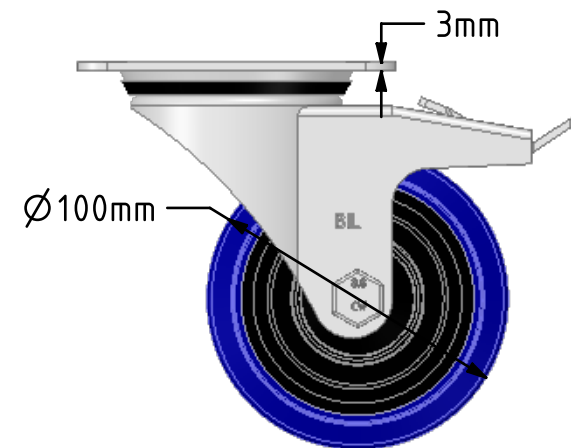
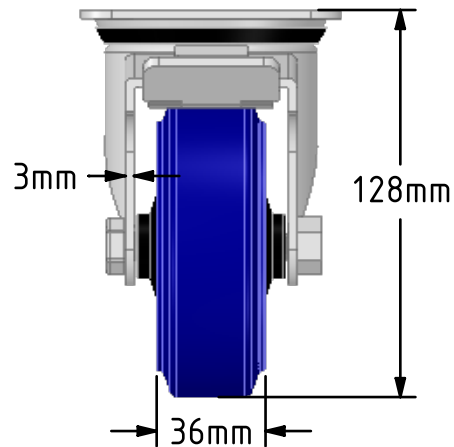
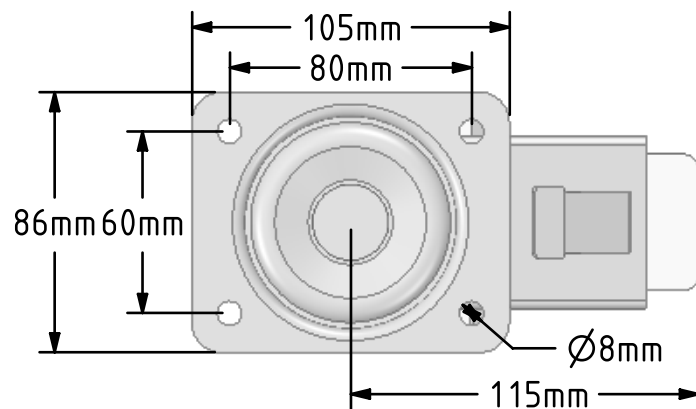


DRAWING DISCLAIMER

COPYRIGHT OF THIS DRAWING IS RESERVED BY BIL GROUP LTD. IT IS ISSUED ON CONDITION THAT IT IS NOT REPRODUCED, COPIED, OR DISCLOSED TO A THIRD PARTY EITHER WHOLLY OR IN PART WITHOUT THE CONSENT IN WRITING OF BIL GROUP LTD.

**Description:**

BZEH100SRNBJSWB

Pressed steel swivel castor with a top plate fixing fitted with a 65 shore A blue elastic rubber on nylon centred wheel with a single ball bearing and retaining caps with a total lock brake. Wheel diameter 100mm, tread width 36mm, overall height 128mm, top plate 105mm x 86mm, hole centres 80mm x 60mm. Load capacity 200kg. REACH compliant also PAH-Free rubber to confirm to EU-directive 2005/69/EC



	NAME	DATE
DRAWN	Matt	25/09/18
APPROVED BY	Chris	25/09/18
SCALE	2:5	25/09/18
WEIGHT	1.064kg	25/09/18

UNLESS OTHERWISE SPECIFIED DIMENSIONS ARE IN MILLIMETRES

Unspecified Tolerances
Machining $\pm 0.25\text{mm}$
Fabrication $\pm 1\text{mm}$



BIL Group Ltd, Porte Marsh Road, Calne
Wiltshire, SN11 9BW, United Kingdom
Tel +44 (0)1249 822 222 Fax: +44 (0)1249 822 300
www.bilgroup.co.uk

TITLE

BZEH100SRNBJSWB

SIZE DWG NO.

A4

BILCW03BZEH100SRNBJSWB_01

REV

1

FILE NAME BILCW03BZEH100SRNBJSWB_01.PDF SHEET 1 OF 1