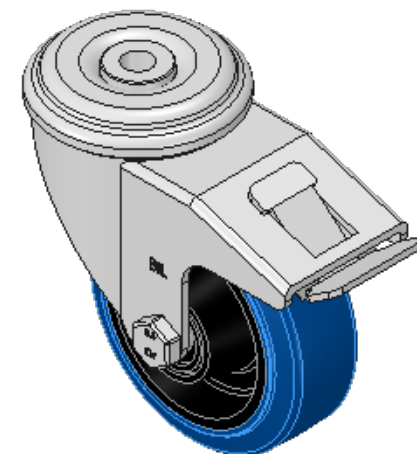
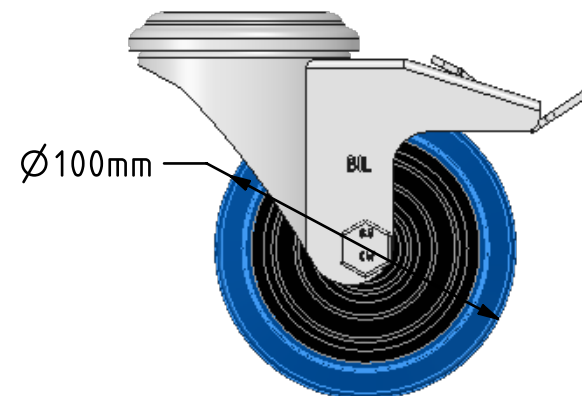
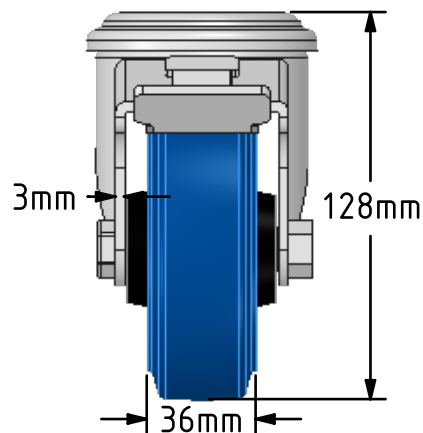
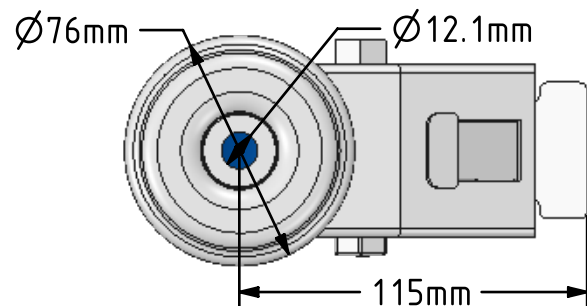


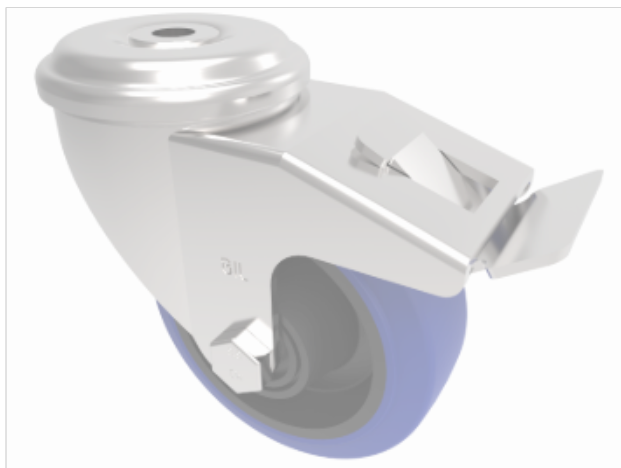
DRAWING DISCLAIMER


COPYRIGHT OF THIS DRAWING IS RESERVED BY BIL GROUP LTD. IT IS ISSUED ON CONDITION THAT IT IS NOT REPRODUCED, COPIED, OR DISCLOSED TO A THIRD PARTY EITHER WHOLLY OR IN PART WITHOUT THE CONSENT IN WRITING OF BIL GROUP LTD.

**Description:**

BZEH100SRNBBH12SWB

Pressed steel swivel castor with 12mm bolt hole fitted with a blue 65 shore A elastic rubber tyre on black nylon centre with roller bearing and a total lock brake. Wheel diameter 100mm, tread width 36mm, overall height 128mm, Load capacity 200kg. REACH compliant also PAH-Free rubber to confirm to EU-directive 2005/69/EC



	NAME	DATE	 <div>BIL Group Ltd, Porte Marsh Road, Calne Wiltshire, SN11 9BW, United Kingdom Tel +44 (0)1249 822 222 Fax: +44 (0)1249 822 300 www.bilgroup.co.uk</div>		
DRAWN	Matt	29/01/18			
APPROVED BY	Chris	29/01/18			
SCALE	2:5	29/01/18			
WEIGHT	1.043kg	29/01/18			
UNLESS OTHERWISE SPECIFIED DIMENSIONS ARE IN MILLIMETRES			TITLE		
Unspecified Tolerances Machining ± 0.25mm Fabrication ± 1mm			BZEH100SRNBBH12SWB		
			SIZE	DWG NO.	REV
			A4	BILCW03BZEH100SRNBBH12SWB__01	1
			FILE NAME BILCW03BZEH100SRNBBH12SWB__01.PDF SHEET 1 OF 1		