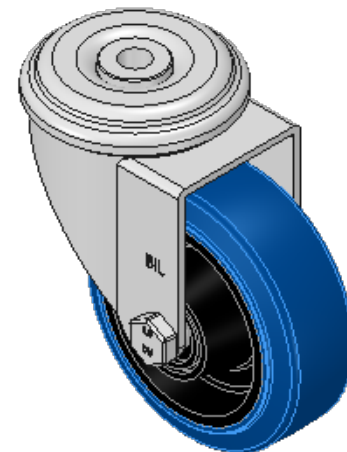
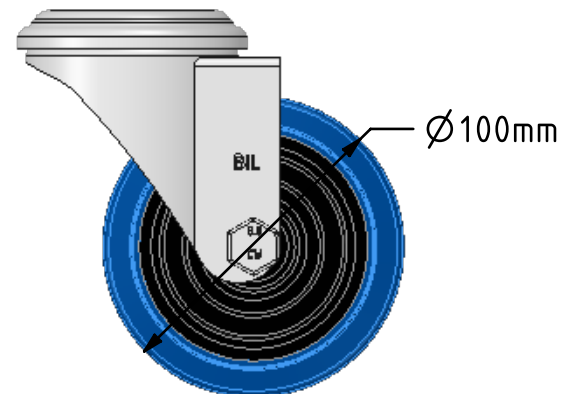
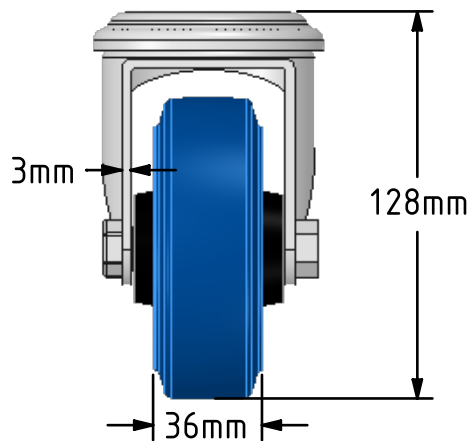
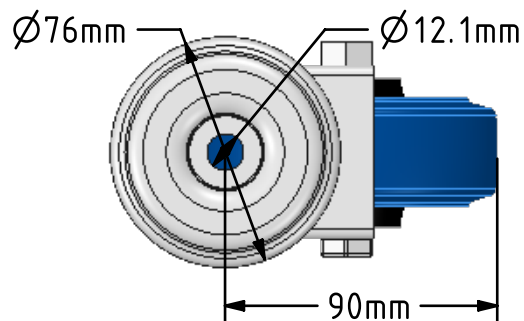


DRAWING DISCLAIMER
 COPYRIGHT OF THIS DRAWING IS RESERVED BY BIL GROUP LTD. IT IS ISSUED ON CONDITION THAT IT IS NOT REPRODUCED, COPIED, OR DISCLOSED TO A THIRD PARTY EITHER WHOLLY OR IN PART WITHOUT THE CONSENT IN WRITING OF BIL GROUP LTD.



Description:
 BZEH100SRNBBH12

Pressed steel swivel castor with 12mm bolt hole fitted with a blue 65 shore A elastic rubber tyre on black nylon centre with roller bearing. Wheel diameter 100mm, tread width 36mm, overall height 128mm, Load capacity 200kg. REACH compliant also PAH-Free rubber to confirm to EU-directive 2005/69/EC



	NAME	DATE
DRAWN	Matt	29/01/18
APPROVED BY	Chris	29/01/18
SCALE	2.5	29/01/18
WEIGHT	0.889kg	29/01/18

UNLESS OTHERWISE SPECIFIED DIMENSIONS ARE IN MILLIMETRES
 Unspecified Tolerances
 Machining ± 0.25mm
 Fabrication ± 1mm

 BIL Group Ltd, Porte Marsh Road, Calne Wiltshire, SN11 9BW, United Kingdom
 Tel +44 (0)1249 822 222 Fax: +44 (0)1249 822 300
 www.bilgroup.co.uk

TITLE
BZEH100SRNBBH12

SIZE	DWG NO.	REV
A4	BILCW03BZEH100SRNBBH12_01	1
FILE NAME BILCW03BZEH100SRNBBH12_01.PDF		SHEET 1 OF 1