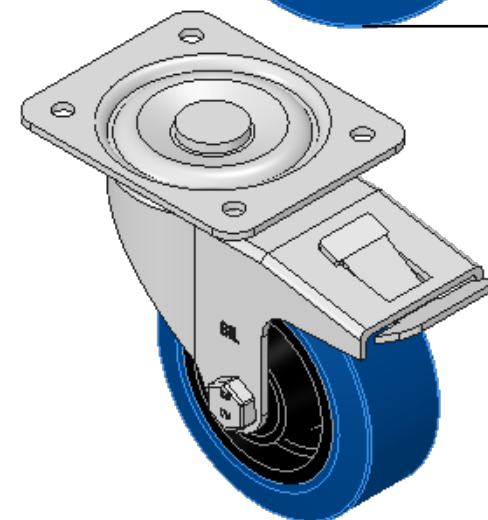
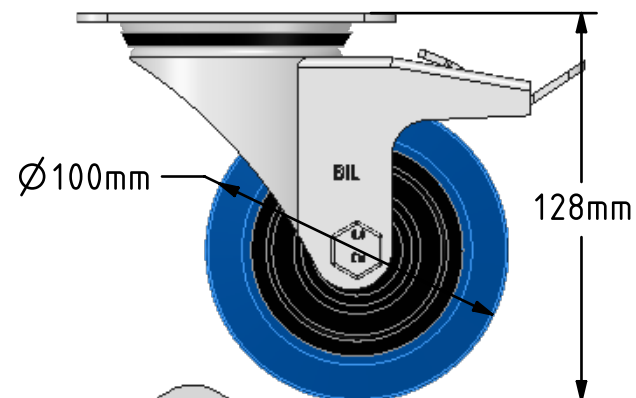
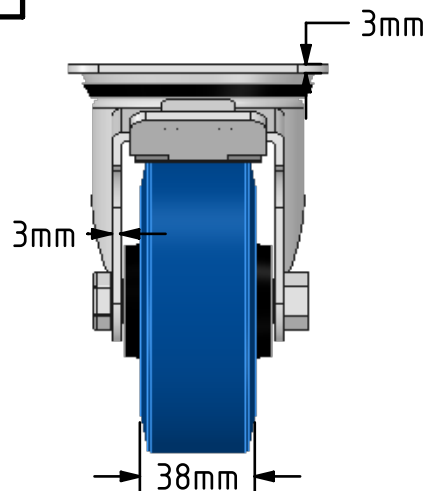
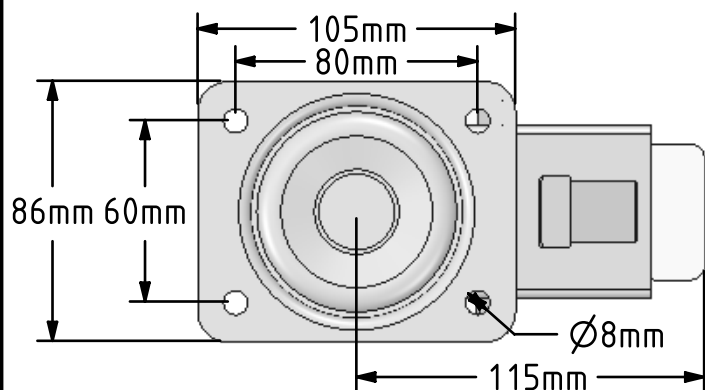



DRAWING DISCLAIMER
 COPYRIGHT OF THIS DRAWING IS RESERVED BY BIL GROUP LTD. IT IS ISSUED ON CONDITION THAT IT IS NOT REPRODUCED, COPIED, OR DISCLOSED TO A THIRD PARTY EITHER WHOLLY OR IN PART WITHOUT THE CONSENT IN WRITING OF BIL GROUP LTD.



Description:
 BZEH100RNBSWB

Pressed steel swivel castor with flat top plate fixing fitted with a blue 75 shore A elastic rubber tyre on black nylon centre wheel with roller bearing and totallock brake. Wheel diameter 100mm, tread width 38mm, overall height 128mm, plate size 105mm x 86mm, hole centres 80mm x 60mm. Load capacity 250kg.



	NAME	DATE	BIL Group Ltd, Porte Marsh Road, Calne Wiltshire, SN11 9BW, United Kingdom Tel +44 (0)1249 822 222 Fax: +44 (0)1249 822 300 www.bilgroup.co.uk	
DRAWN	Matt	19/01/18	 TITLE BZEH100RNBSWB	
APPROVED BY	Chris	19/01/18		
SCALE	2:5	19/01/18		
WEIGHT	1.152kg	19/01/18		
UNLESS OTHERWISE SPECIFIED DIMENSIONS ARE IN MILLIMETRES			SIZE	DWG NO.
Unspecified Tolerances Machining ± 0.25mm Fabrication ± 1mm			A4	BILCW03BZEH100RNBSWB_01
			REV	1
			FILE NAME	BILCW03BZEH100RNBSWB_01.PDF SHEET 1 OF 1