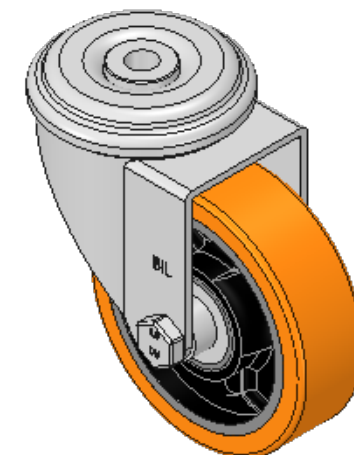
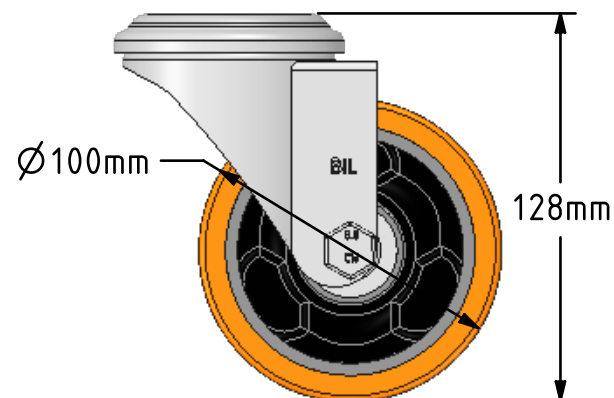
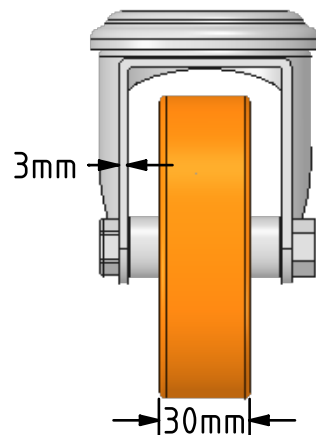
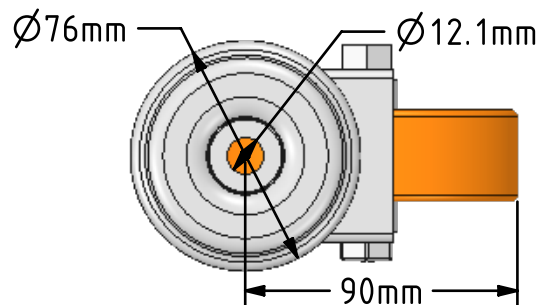



DRAWING DISCLAIMER
 COPYRIGHT OF THIS DRAWING IS RESERVED BY BIL GROUP LTD. IT IS ISSUED ON CONDITION THAT IT IS NOT REPRODUCED, COPIED, OR DISCLOSED TO A THIRD PARTY EITHER WHOLLY OR IN PART WITHOUT THE CONSENT IN WRITING OF BIL GROUP LTD.



Description:
 BZEH100PTBJBH12

Pressed steel swivel castor with a 12mm bolt hole fixing fitted with a polyurethane tyred cast iron centred wheel with ball journal bearings. Wheel diameter 100mm, tread width 30mm, overall height 128mm. Load capacity 250kg.



| | NAME | DATE | BIL Group Ltd, Porte Marsh Road, Calne Wiltshire, SN11 9BW, United Kingdom Tel +44 (0)1249 822 222 Fax: +44 (0)1249 822 300 www.bilgroup.co.uk | |
|---|---------|-----------------------------------|---|--|
| DRAWN | Matt | 29/01/18 |  | |
| APPROVED BY | Chris | 29/01/18 | | |
| SCALE | 2:5 | 29/01/18 | | |
| WEIGHT | 1.385kg | 29/01/18 | | |
| UNLESS OTHERWISE SPECIFIED DIMENSIONS ARE IN MILLIMETRES | | | TITLE | |
| Unspecified Tolerances Machining ± 0.25mm Fabrication ± 1mm | | | BZEH100PTBJBH12 | |
| SIZE A4 | | DWG NO. BILCW03BZEH100PTBJBH12_01 | REV 1 | |
| FILE NAME BILCW03BZEH100PTBJBH12_01.PDF | | | SHEET 1 OF 1 | |