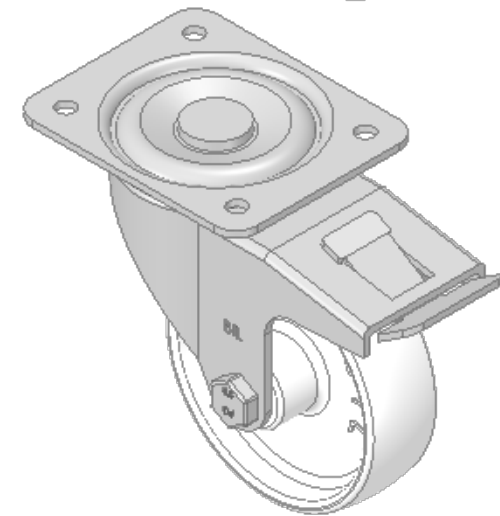
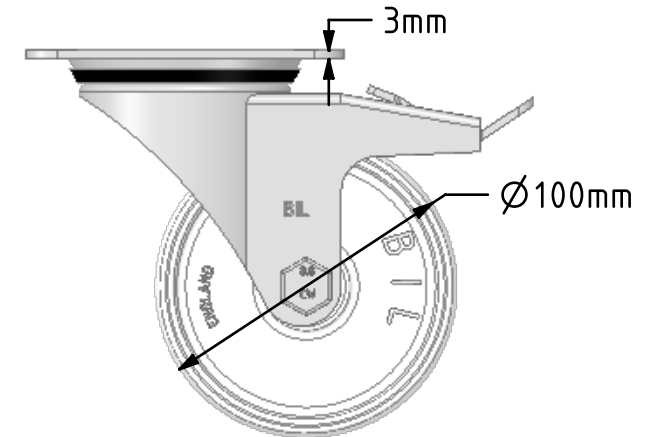
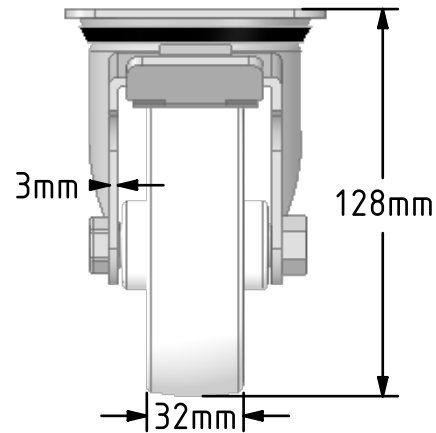
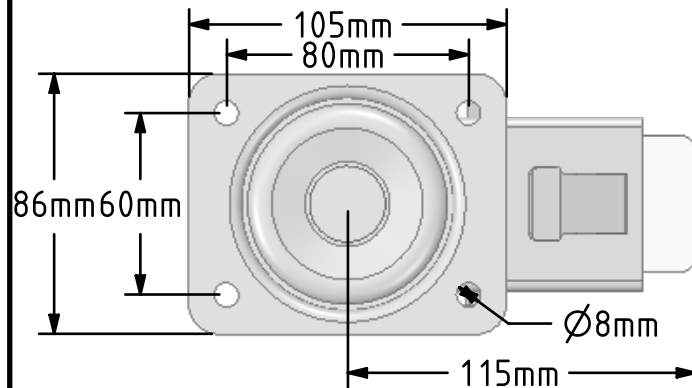


**DRAWING DISCLAIMER**

COPYRIGHT OF THIS DRAWING IS RESERVED BY BIL GROUP LTD. IT IS ISSUED ON CONDITION THAT IT IS NOT REPRODUCED, COPIED, OR DISCLOSED TO A THIRD PARTY EITHER WHOLLY OR IN PART WITHOUT THE CONSENT IN WRITING OF BIL GROUP LTD.

**Description:**

BZEH100NYSWB

Pressed steel swivel castor with a top plate fixing fitted with a white nylon wheel with a plain bearing and total lock brake. Wheel diameter 100mm, tread width 32mm, overall height 128mm, plate size 105mm x 86mm, hole centres 80mm x 60mm. Load capacity 270kg.



	NAME	DATE
DRAWN	Matt	24/01/18
APPROVED BY	Tim W	24/01/18
SCALE	2:5	24/01/18
WEIGHT	0.966kg	24/01/18

UNLESS OTHERWISE SPECIFIED DIMENSIONS ARE IN MILLIMETRES

Unspecified Tolerances  
Machining  $\pm 0.25\text{mm}$   
Fabrication  $\pm 1\text{mm}$



BIL Group Ltd, Porte Marsh Road, Calne  
Wiltshire, SN11 9BW, United Kingdom  
Tel +44 (0)1249 822 222 Fax: +44 (0)1249 822 300  
www.bilgroup.co.uk

TITLE

BZEH100NYSWB

SIZE DWG NO.

A4

BILCW03BZEH100NYSWB\_01

REV

1

FILE NAME BILCW03BZEH100NYSWB\_01.PDF

SHEET 1 OF 1