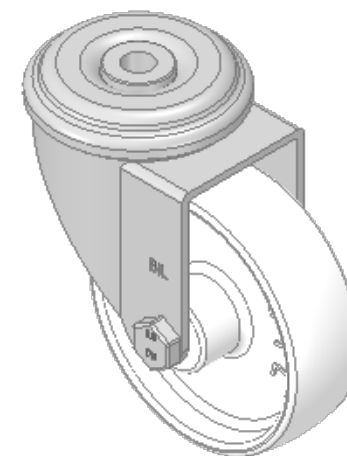
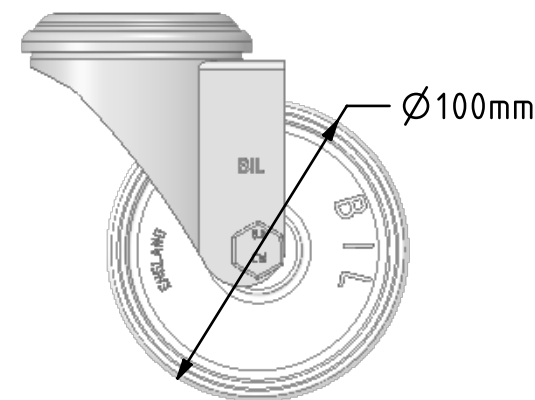
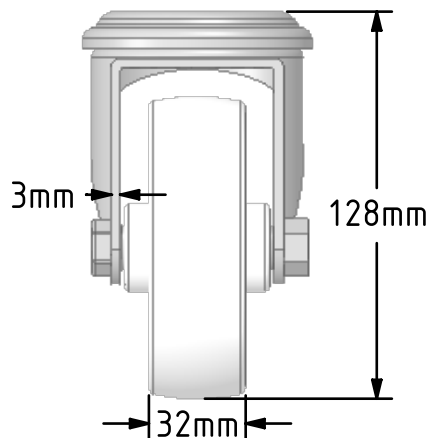
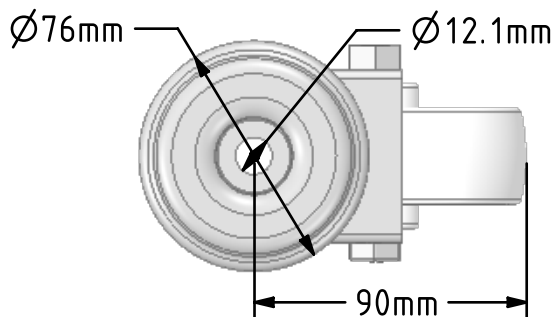



DRAWING DISCLAIMER  
 COPYRIGHT OF THIS DRAWING IS RESERVED BY BIL GROUP LTD. IT IS ISSUED ON CONDITION THAT IT IS NOT REPRODUCED, COPIED, OR DISCLOSED TO A THIRD PARTY EITHER WHOLLY OR IN PART WITHOUT THE CONSENT IN WRITING OF BIL GROUP LTD.



Description:  
 BZE100NYBH12

Pressed steel swivel castor with a 12mm bolt hole fixing fitted with a white nylon wheel with a plain bearing. Wheel diameter 100mm, tread width 32mm, overall height 128mm. Load capacity 270kg.



	NAME	DATE	 BIL Group Ltd, Porte Marsh Road, Calne Wiltshire, SN11 9BW, United Kingdom Tel +44 (0)1249 822 222 Fax: +44 (0)1249 822 300 www.bilgroup.co.uk
DRAWN	Matt	26/01/18	
APPROVED BY	Chris	26/01/18	
SCALE	2:5	26/01/18	
WEIGHT	0.754kg	26/01/18	
UNLESS OTHERWISE SPECIFIED DIMENSIONS ARE IN MILLIMETRES  Unspecified Tolerances Machining ± 0.25mm Fabrication ± 1mm			TITLE <b>BZE100NYBBH12</b>
SIZE	DWG NO.		REV
A4	BILCW03BZE100NYBBH12_01		1
FILE NAME			SHEET 1 OF 1
BILCW03BZE100NYBBH12_01.PDF			