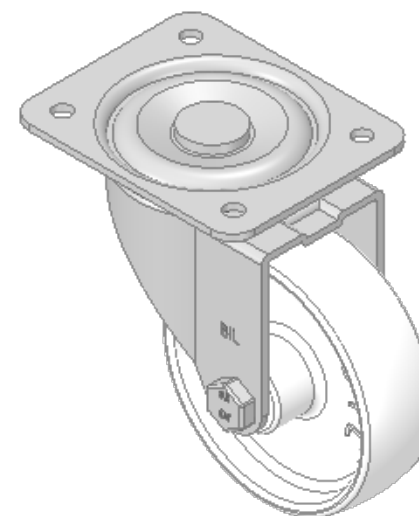
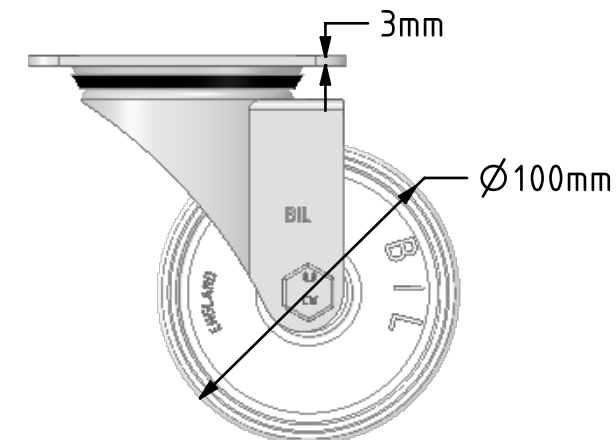
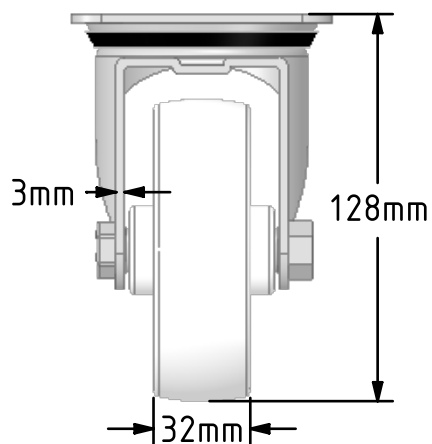
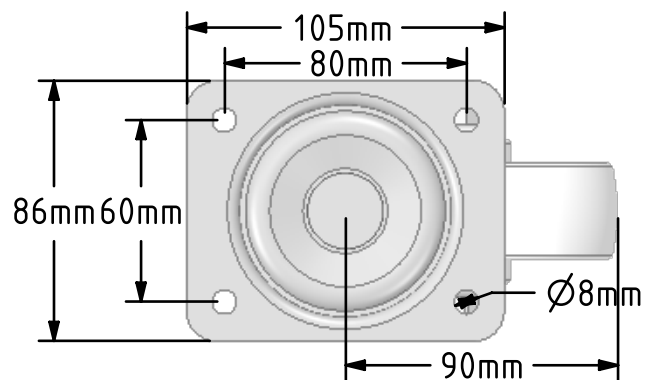



DRAWING DISCLAIMER
 COPYRIGHT OF THIS DRAWING IS RESERVED BY BIL GROUP LTD. IT IS ISSUED ON CONDITION THAT IT IS NOT REPRODUCED, COPIED, OR DISCLOSED TO A THIRD PARTY EITHER WHOLLY OR IN PART WITHOUT THE CONSENT IN WRITING OF BIL GROUP LTD.



Description:
 BZEH100NY

Pressed steel swivel castor with a top plate fixing fitted with a white nylon wheel with a plain bearing. Wheel diameter 100mm, tread width 32mm, overall height 128mm, plate size 105mm x 86mm, hole centres 80mm x 60mm. Load capacity 270kg.



	NAME	DATE	 BIL Group Ltd, Porte Marsh Road, Calne Wiltshire, SN11 9BW, United Kingdom Tel +44 (0)1249 822 222 Fax: +44 (0)1249 822 300 www.bilgroup.co.uk		
DRAWN	Matt	24/01/18			
APPROVED BY	Tim W	24/01/18	TITLE <p style="text-align: center;">BZEH1000NY</p>		
SCALE	2:5	24/01/18			
WEIGHT	0.825kg	24/01/18			
UNLESS OTHERWISE SPECIFIED DIMENSIONS ARE IN MILLIMETRES Unspecified Tolerances Machining ± 0.25mm Fabrication ± 1mm			SIZE A4	DWG NO. BILCW03BZEH100NY_01	REV 1
FILE NAME			BILCW03BZEH100NY_01.PDF		SHEET 1 OF 1