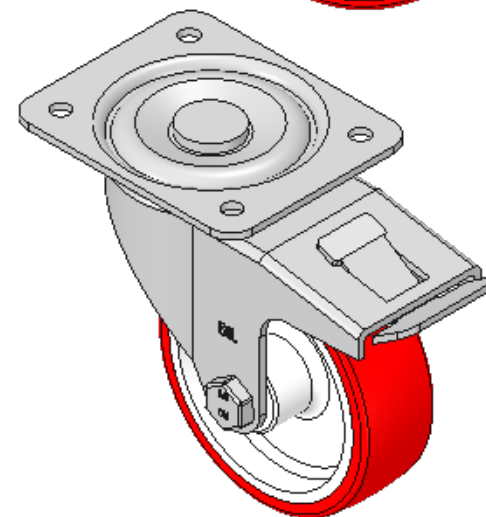
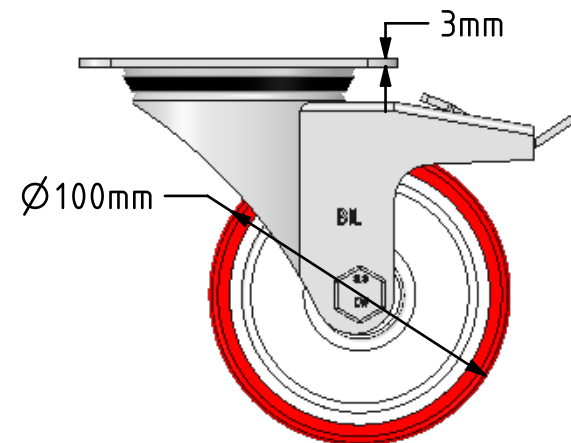
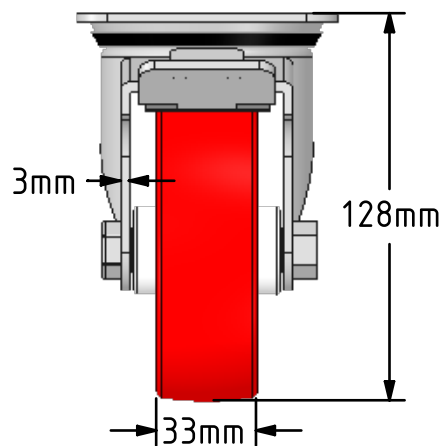
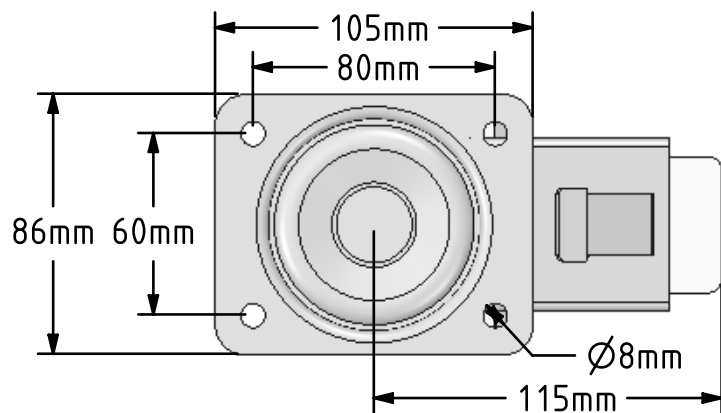


DRAWING DISCLAIMER
 COPYRIGHT OF THIS DRAWING IS RESERVED BY BIL GROUP LTD. IT IS ISSUED ON CONDITION THAT IT IS NOT REPRODUCED, COPIED, OR DISCLOSED TO A THIRD PARTY EITHER WHOLLY OR IN PART WITHOUT THE CONSENT IN WRITING OF BIL GROUP LTD.



Description:
 BZEH100NPSWB

Pressed steel swivel castor with a top plate fixing fitted with a red polyurethane wheel on a white nylon centre with a plain bearing and total lock brake. Wheel diameter 100mm, tread width 33mm, overall height 128mm, top plate 105mm x 86mm, hole centres 80mm x 60mm. Load capacity 250kg.



	NAME	DATE
DRAWN	Matt	19/07/18
APPROVED BY	Tim W	19/07/18
SCALE	2.5	19/07/18
WEIGHT	1.027kg	19/07/18

 BIL Group Ltd, Porte Marsh Road, Calne
 Wiltshire, SN11 9BW, United Kingdom
 Tel +44 (0)1249 822 222 Fax: +44 (0)1249 822 300
 www.bilgroup.co.uk

TITLE		REV
BZEH100NPSWB		1
SIZE	DWG NO.	
A4	BILCW03BZEH100NPSWB_01	
FILE NAME	SHEET 1 OF 1	
	BILCW03BZEH100NPSWB_01.PDF	

UNLESS OTHERWISE SPECIFIED DIMENSIONS ARE IN MILLIMETRES

Unspecified Tolerances
 Machining ± 0.25mm
 Fabrication ± 1mm