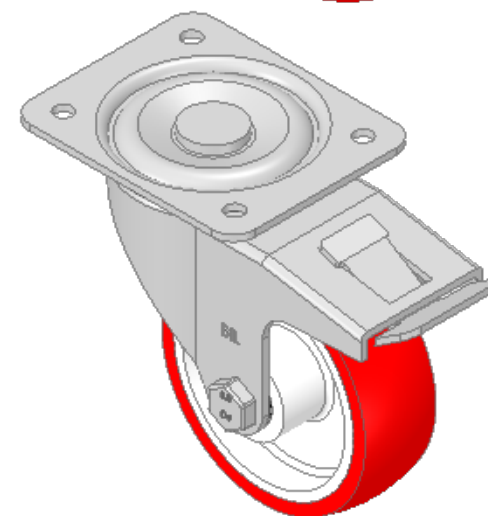
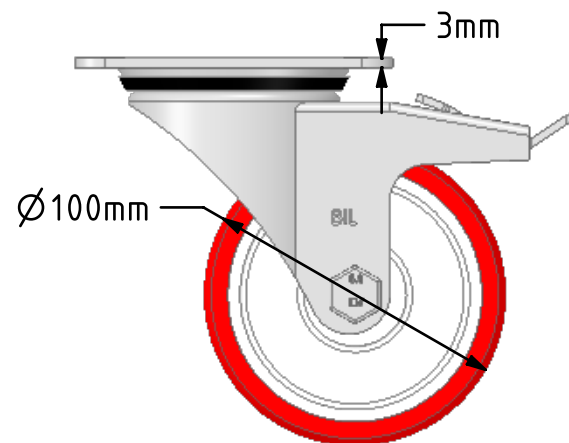
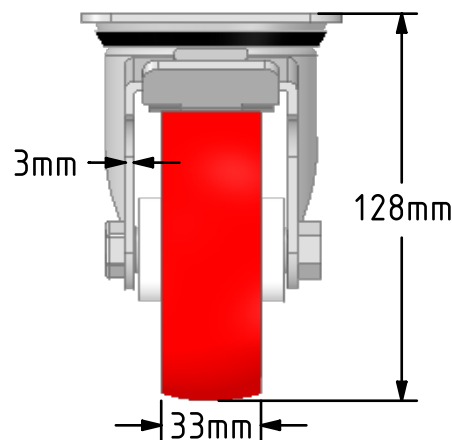
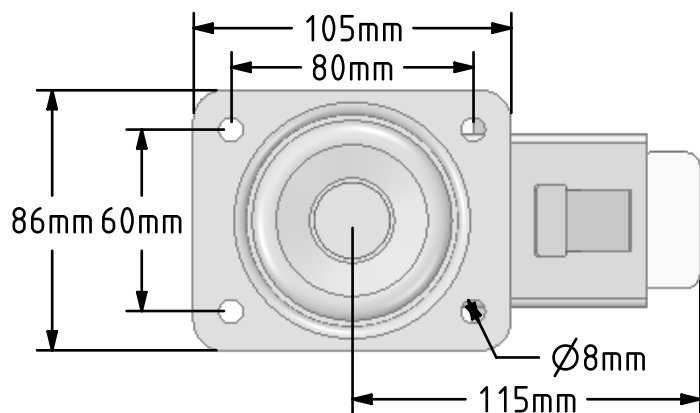


DRAWING DISCLAIMER
 COPYRIGHT OF THIS DRAWING IS RESERVED BY BIL GROUP LTD. IT IS ISSUED ON CONDITION THAT IT IS NOT REPRODUCED, COPIED, OR DISCLOSED TO A THIRD PARTY EITHER WHOLLY OR IN PART WITHOUT THE CONSENT IN WRITING OF BIL GROUP LTD.



Description:
 BZEH100NPBSWB

Pressed steel swivel castor with a top plate fixing fitted with a red polyurethane tyre white nylon centred wheel with a roller bearing and total lock brake. Wheel diameter 100mm, tread width 33mm, overall height 128mm, top plate 105mm x 86mm, hole centres 80mm x 60mm. Load capacity 250kg.



	NAME	DATE
DRAWN	Matt	01/10/18
APPROVED BY	Chris	01/10/18
SCALE	2:5	01/10/18
WEIGHT	1.058kg	01/10/18

UNLESS OTHERWISE SPECIFIED DIMENSIONS ARE IN MILLIMETRES

Unspecified Tolerances
 Machining ± 0.25mm
 Fabrication ± 1mm



BIL Group Ltd, Porte Marsh Road, Calne
 Wiltshire, SN11 9BW, United Kingdom
 Tel +44 (0)1249 822 222 Fax: +44 (0)1249 822 300
 www.bilgroup.co.uk

TITLE

BZEH100NPBSWB

SIZE	DWG NO.	REV
A4	BILCW03BZEH100NPBSWB_02	2

FILE NAME BILCW03BZEH100NPBSWB_02.PDF SHEET 1 OF 1