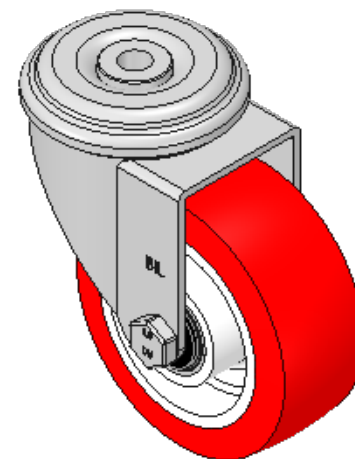
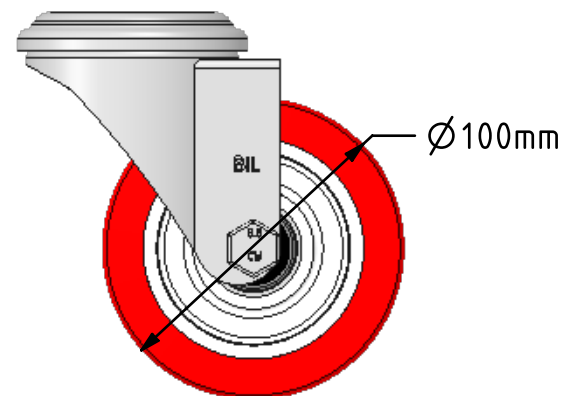
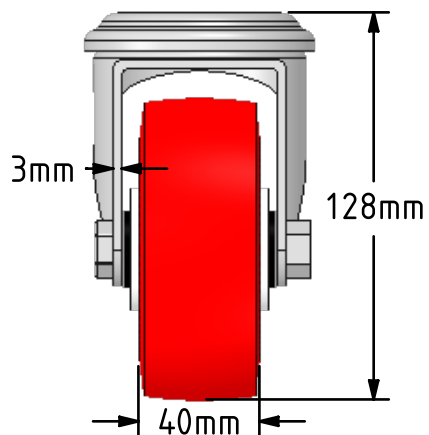
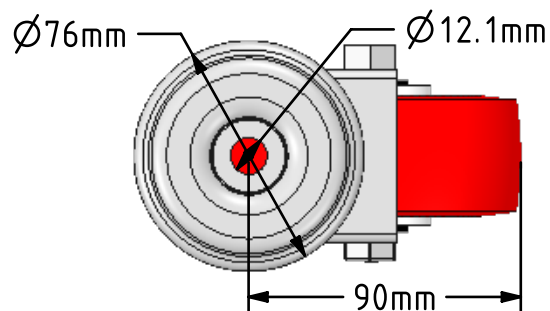


DRAWING DISCLAIMER
 COPYRIGHT OF THIS DRAWING IS RESERVED BY BIL GROUP LTD. IT IS ISSUED ON CONDITION THAT IT IS NOT REPRODUCED, COPIED, OR DISCLOSED TO A THIRD PARTY EITHER WHOLLY OR IN PART WITHOUT THE CONSENT IN WRITING OF BIL GROUP LTD.



Description:
 BZE100NPBJBH12

Pressed steel swivel castor with a 12mm bolt hole fitted with a red polyurethane tyre on white nylon centred wheel with ball bearings, wheel diameter 100mm, tread width 40mm, overall height 128mm, load capacity of 250kgs.



	NAME	DATE
DRAWN	Matt	29/01/18
APPROVED BY	Chris	29/01/18
SCALE	2:5	29/01/18
WEIGHT	0.94kg	29/01/18

UNLESS OTHERWISE SPECIFIED DIMENSIONS ARE IN MILLIMETRES

Unspecified Tolerances
 Machining ± 0.25mm
 Fabrication ± 1mm

 BIL Group Ltd, Porte Marsh Road, Calne
 Wiltshire, SN11 9BW, United Kingdom
 Tel +44 (0)1249 822 222 Fax: +44 (0)1249 822 300
 www.bilgroup.co.uk

TITLE	BZE100NPBJBH12	
-------	----------------	--

SIZE	DWG NO.	REV
A4	BILCW03BZE100NPBJBH12_01	1

FILE NAME BILCW03BZE100NPBJBH12_01.PDF SHEET 1 OF 1