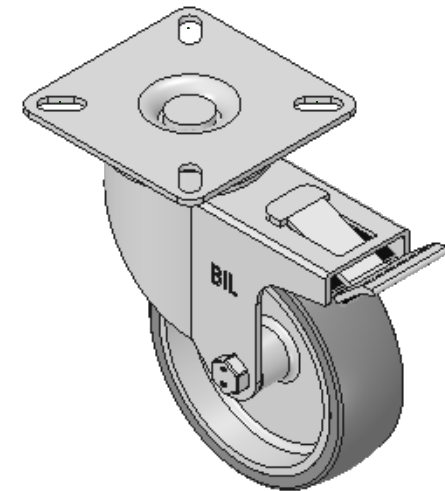
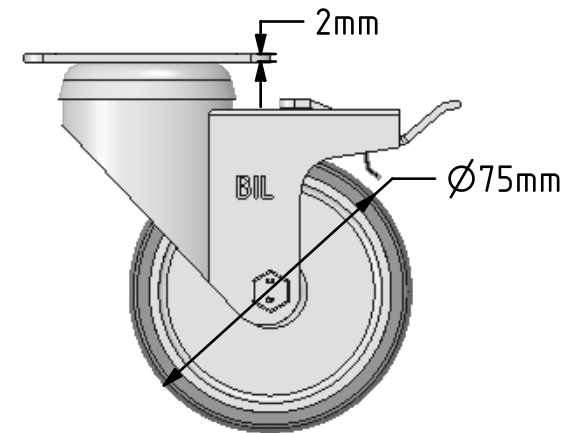
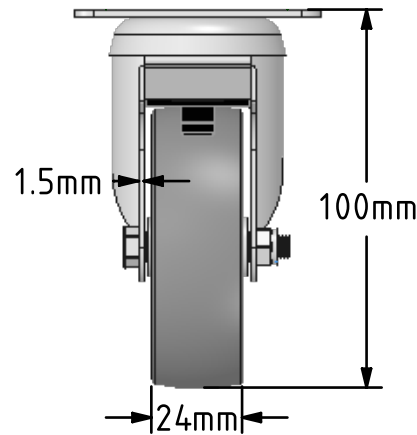
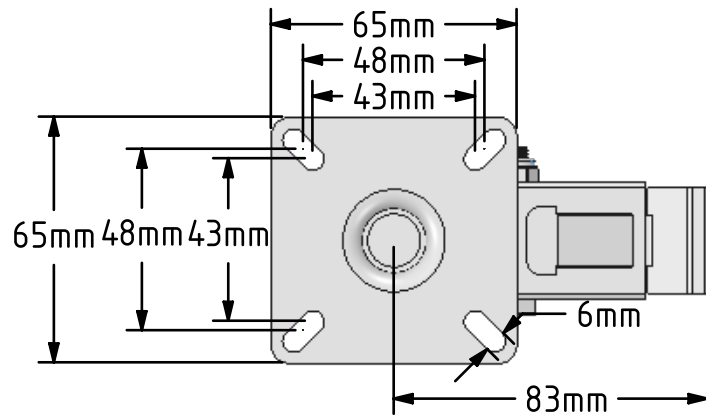



**DRAWING DISCLAIMER**

COPYRIGHT OF THIS DRAWING IS RESERVED BY BIL GROUP LTD. IT IS ISSUED ON CONDITION THAT IT IS NOT REPRODUCED, COPIED, OR DISCLOSED TO A THIRD PARTY EITHER WHOLLY OR IN PART WITHOUT THE CONSENT IN WRITING OF BIL GROUP LTD.

**Description:****BZD75VGRSWB**

Pressed steel swivel castor with a top plate fixing fitted with a grey thermoplastic rubber tyre on a grey polypropylene centred wheel with plain bore and total lock brake. Wheel diameter 75mm, tread width 24mm, plate size 65mm x 65mm, bolt holes 48mm x 48mm or 43mm x 43mm with an overall height 100mm. Load capacity 50kg.



	NAME	DATE	<div></div> <div>BIL Group Ltd, Porte Marsh Road, Calne Wiltshire, SN11 9BW, United Kingdom Tel +44 (0)1249 822 222 Fax: +44 (0)1249 822 300 www.bilgroup.co.uk</div>		
DRAWN	Matt	15/11/17			
APPROVED BY	Chris	15/11/17			
SCALE	1:2	15/11/17			
WEIGHT	0.348kg	15/11/17			
<div>UNLESS OTHERWISE SPECIFIED DIMENSIONS ARE IN MILLIMETRES</div> <div>Unspecified Tolerances Machining ± 0.25mm Fabrication ± 1mm</div>			TITLE		
			BZD75VGRSWB		
			SIZE	DWG NO.	REV
			A4	BILCW03BZD75VGRSWB__01	1
FILE NAME			BILCW03BZD75VGRSWB__01.PDF SHEET 1 OF 1		