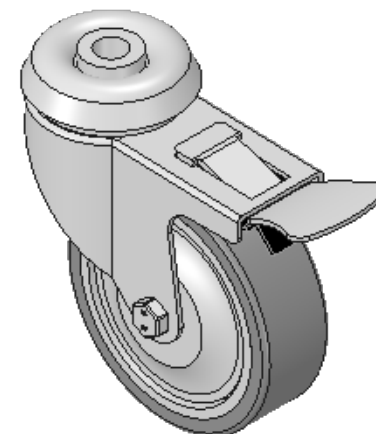
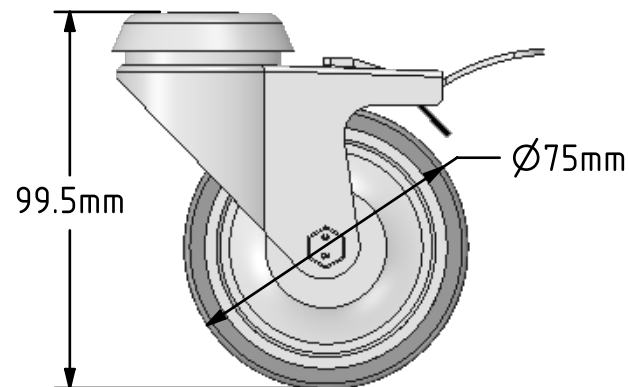
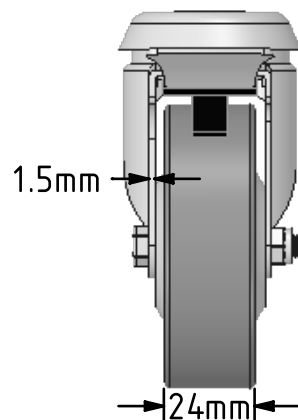
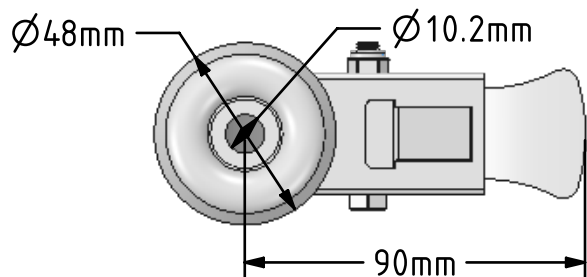



DRAWING DISCLAIMER
 COPYRIGHT OF THIS DRAWING IS RESERVED BY BIL GROUP LTD. IT IS ISSUED ON CONDITION THAT IT IS NOT REPRODUCED, COPIED, OR DISCLOSED TO A THIRD PARTY EITHER WHOLLY OR IN PART WITHOUT THE CONSENT IN WRITING OF BIL GROUP LTD.



Description:
 BZD75VGRBJBH10SWB

Pressed steel swivel castor with a 10mm bolt hole fixing fitted with a grey thermoplastic rubber tyred on a grey polypropylene centred wheel with a ball bearing and a total lock brake. Wheel diameter 75mm, tread width 24mm, overall height 99mm. Load capacity 50kg.



	NAME	DATE	BIL Group Ltd, Porte Marsh Road, Calne Wiltshire, SN11 9BW, United Kingdom Tel +44 (0)1249 822 222 Fax: +44 (0)1249 822 300 www.bilgroup.co.uk	
DRAWN	Matt	17/11/17	 TITLE BZD75VGRBJBH10SWB	
APPROVED BY	Chris	17/11/17		
SCALE	1:2	17/11/17		
WEIGHT	0.319kg	17/11/17		
UNLESS OTHERWISE SPECIFIED DIMENSIONS ARE IN MILLIMETRES			SIZE	DWG NO.
Unspecified Tolerances Machining ± 0.25mm Fabrication ± 1mm			A4	BILCW03BZD75VGRBJBH10SWB_01
			REV	1
FILE NAME BILCW03BZD75VGRBJBH10SWB_01.PDF SHEET 1 OF 1				