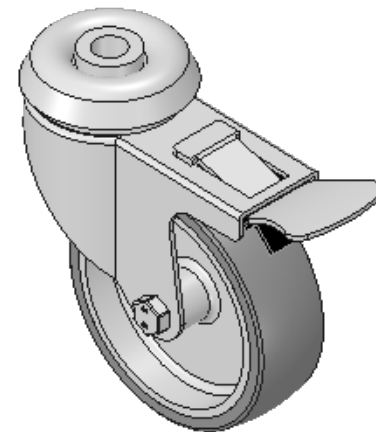
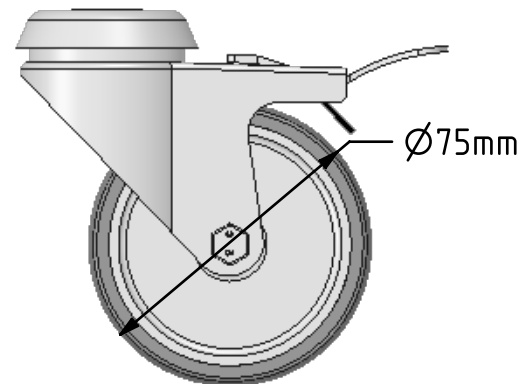
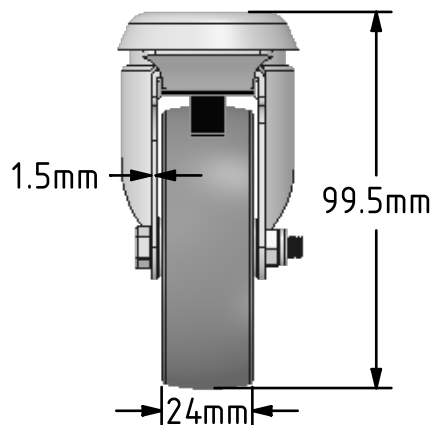
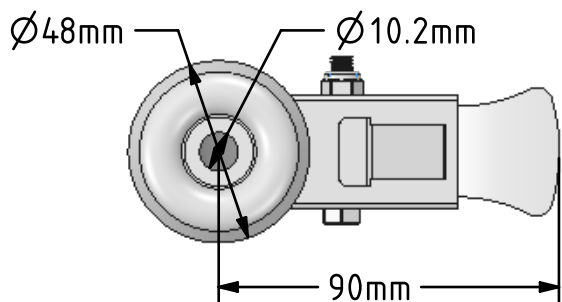



DRAWING DISCLAIMER
 COPYRIGHT OF THIS DRAWING IS RESERVED BY BIL GROUP LTD. IT IS ISSUED ON CONDITION THAT IT IS NOT REPRODUCED, COPIED, OR DISCLOSED TO A THIRD PARTY EITHER WHOLLY OR IN PART WITHOUT THE CONSENT IN WRITING OF BIL GROUP LTD.



Description:
 BZD75VGRBH10SWB

Pressed steel swivel castor with a 10mm bolt hole fitted with a grey thermoplastic rubber tyre on a grey polypropylene centred wheel with a plain bearing and total lock brake. Wheel diameter 75mm, tread width 24mm, overall height 99mm. Load capacity 50kg REACH COMPLIANT



	NAME	DATE	BIL Group Ltd, Porte Marsh Road, Calne Wiltshire, SN11 9BW, United Kingdom Tel +44 (0)1249 822 222 Fax: +44 (0)1249 822 300 www.bilgroup.co.uk	
DRAWN	Matt	17/11/17	 TITLE BZD75VGRBH10SWB	
APPROVED BY	Chris	17/11/17		
SCALE	1:2	17/11/17		
WEIGHT	0.29kg	17/11/17		
UNLESS OTHERWISE SPECIFIED DIMENSIONS ARE IN MILLIMETRES			SIZE	DWG NO.
Unspecified Tolerances Machining ± 0.25mm Fabrication ± 1mm			A4	BILCW03BZD75VGRBH10SWB_01
			REV	1
			FILE NAME	BILCW03BZD75VGRBH10SWB_01.PDF SHEET 1 OF 1