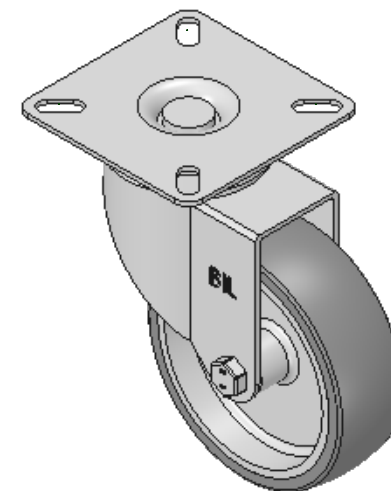
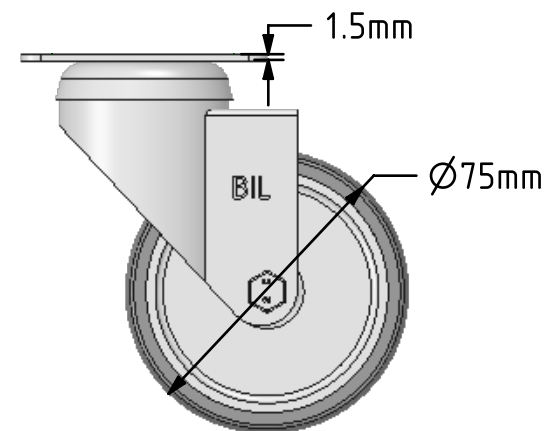
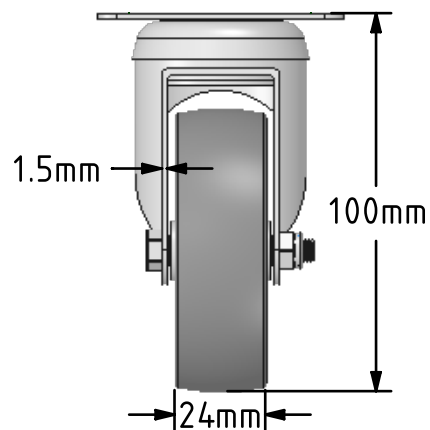
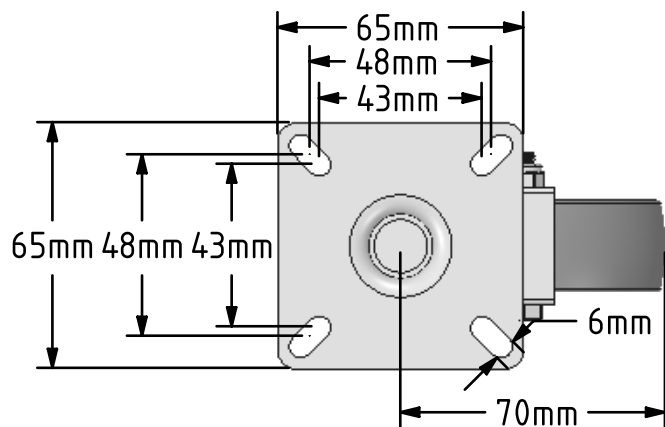


DRAWING DISCLAIMER  
 COPYRIGHT OF THIS DRAWING IS RESERVED BY BIL GROUP LTD. IT IS ISSUED ON CONDITION THAT IT IS NOT REPRODUCED, COPIED, OR DISCLOSED TO A THIRD PARTY EITHER WHOLLY OR IN PART WITHOUT THE CONSENT IN WRITING OF BIL GROUP LTD.



Description:  
 BZD75VGR

Pressed steel swivel castor with a top plate fixing fitted with a grey thermoplastic rubber tyre on a grey polypropylene centred wheel with a plain bearing. Wheel diameter 75mm, tread width 24mm, plate size 65mm x 65mm, bolt holes 48mm x 48mm or 43mm x 43mm with an overall height 100mm. Load capacity 50kg.



|             | NAME    | DATE     |
|-------------|---------|----------|
| DRAWN       | Matt    | 15/11/17 |
| APPROVED BY | Chris   | 15/11/17 |
| SCALE       | 1:2     | 15/11/17 |
| WEIGHT      | 0.303kg | 15/11/17 |

UNLESS OTHERWISE SPECIFIED DIMENSIONS ARE IN MILLIMETRES

Unspecified Tolerances  
 Machining ± 0.25mm  
 Fabrication ± 1mm



BIL Group Ltd, Porte Marsh Road, Calne  
 Wiltshire, SN11 9BW, United Kingdom  
 Tel +44 (0)1249 822 222 Fax: +44 (0)1249 822 300  
 www.bilgroup.co.uk

TITLE

BZD75VGR

| SIZE      | DWG NO.                 | REV          |
|-----------|-------------------------|--------------|
| A4        | BILCW03BZD75VGR__01     | 1            |
| FILE NAME | BILCW03BZD75VGR__01.PDF | SHEET 1 OF 1 |