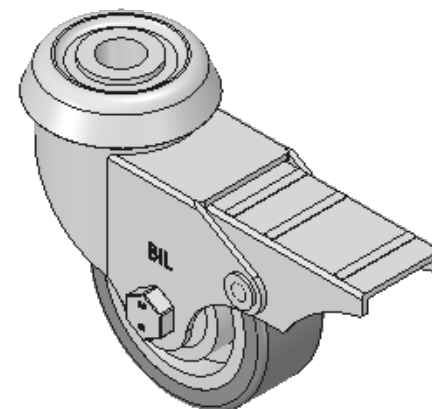
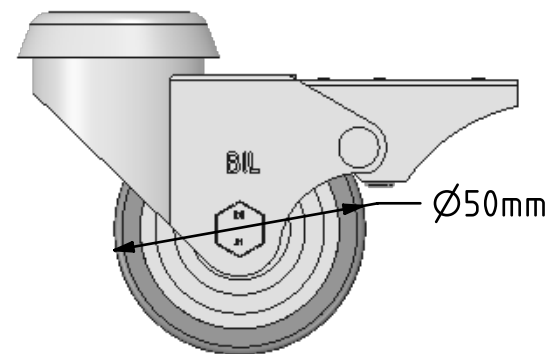
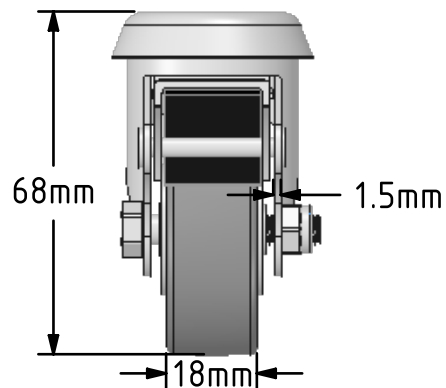
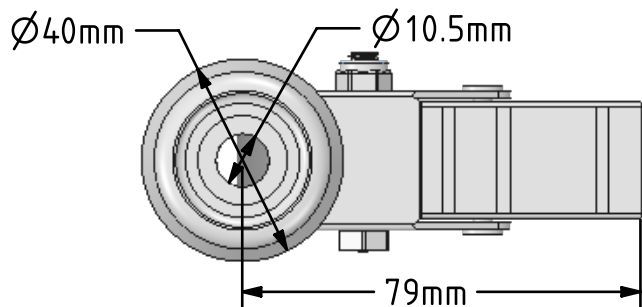



DRAWING DISCLAIMER
 COPYRIGHT OF THIS DRAWING IS RESERVED BY BIL GROUP LTD. IT IS ISSUED ON CONDITION THAT IT IS NOT REPRODUCED, COPIED, OR DISCLOSED TO A THIRD PARTY EITHER WHOLLY OR IN PART WITHOUT THE CONSENT IN WRITING OF BIL GROUP LTD.



Description:
 BZD50VGRBJBH10SWB

Pressed steel swivel castor with a 10mm bolt hole with a brake fitted with a thermoplastic rubber tyred polypropylene centred wheel with ball bearing. Wheel diameter 50mm, tread width 18mm, overall height 68mm, load capacity 40kg.



	NAME	DATE	BIL Group Ltd, Porte Marsh Road, Calne Wiltshire, SN11 9BW, United Kingdom Tel +44 (0)1249 822 222 Fax: +44 (0)1249 822 300 www.bilgroup.co.uk	
DRAWN	Matt	17/11/17		
APPROVED BY	Chris	17/11/17		
SCALE	2:3	17/11/17		
WEIGHT	0.242kg	17/11/17		
UNLESS OTHERWISE SPECIFIED DIMENSIONS ARE IN MILLIMETRES			TITLE	
Unspecified Tolerances Machining $\pm 0.25\text{mm}$ Fabrication $\pm 1\text{mm}$			BZD50VGRBJBH10SWB	
			SIZE A4	DWG NO. BILCW03BZD50VGRBJBH10SWB_01
				REV 1
			FILE NAME BILCW03BZD50VGRBJBH10SWB_01.PDF SHEET 1 OF 1	