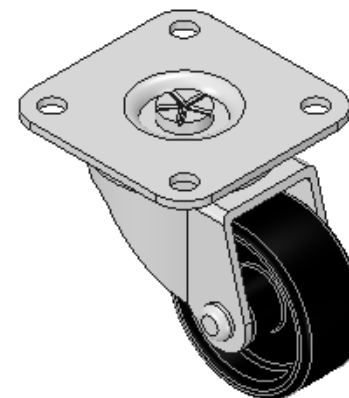
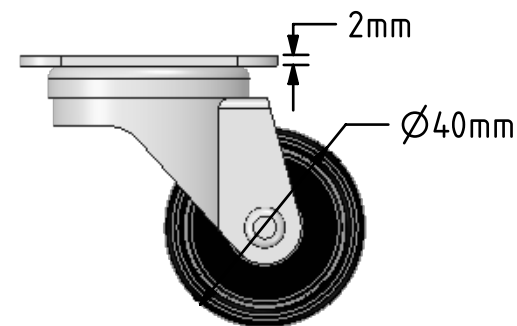
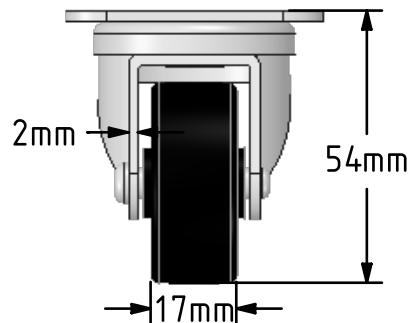
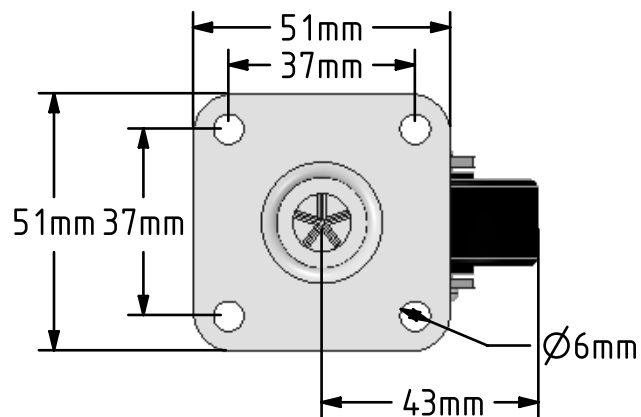



DRAWING DISCLAIMER  
 COPYRIGHT OF THIS DRAWING IS RESERVED BY BIL GROUP LTD. IT IS ISSUED ON CONDITION THAT IT IS NOT REPRODUCED, COPIED, OR DISCLOSED TO A THIRD PARTY EITHER WHOLLY OR IN PART WITHOUT THE CONSENT IN WRITING OF BIL GROUP LTD.



Description:  
 BZD40PL

Pressed steel swivel castor with a top plate fixing fitted with black polypropylene wheel with a plain bearing. Wheel diameter 40mm, tread width 17mm, overall height 54mm, top plate 51mm x 51mm, hole centres 37mm x 37mm load capacity 30kg.



|   | NAME    | DATE     | BIL Group Ltd, Porte Marsh Road, Calne Wiltshire, SN11 9BW, United Kingdom<br>Tel +44 (0)1249 822 222 Fax: +44 (0)1249 822 300<br>www.bilgroup.co.uk |                                     |
|---|---------|----------|--|-------------------------------------|
| DRAWN   | Matt    | 13/11/17 | <br>TITLE<br><p style="text-align: center;">BZD40PL</p>         |                                     |
| APPROVED BY   | Chris   | 13/11/17 |  |                                     |
| SCALE   | 2:3     | 13/11/17 |  |                                     |
| WEIGHT  | 0.137kg | 13/11/17 |  |                                     |
| UNLESS OTHERWISE SPECIFIED DIMENSIONS ARE IN MILLIMETRES          |         |          | SIZE   | DWG NO.                             |
| Unspecified Tolerances<br>Machining ± 0.25mm<br>Fabrication ± 1mm |         |          | A4   | BILCW03BZD40PL__01                  |
|   |         |          | REV  | 1                                   |
|   |         |          | FILE NAME  | BILCW03BZD40PL__01.PDF SHEET 1 OF 1 |